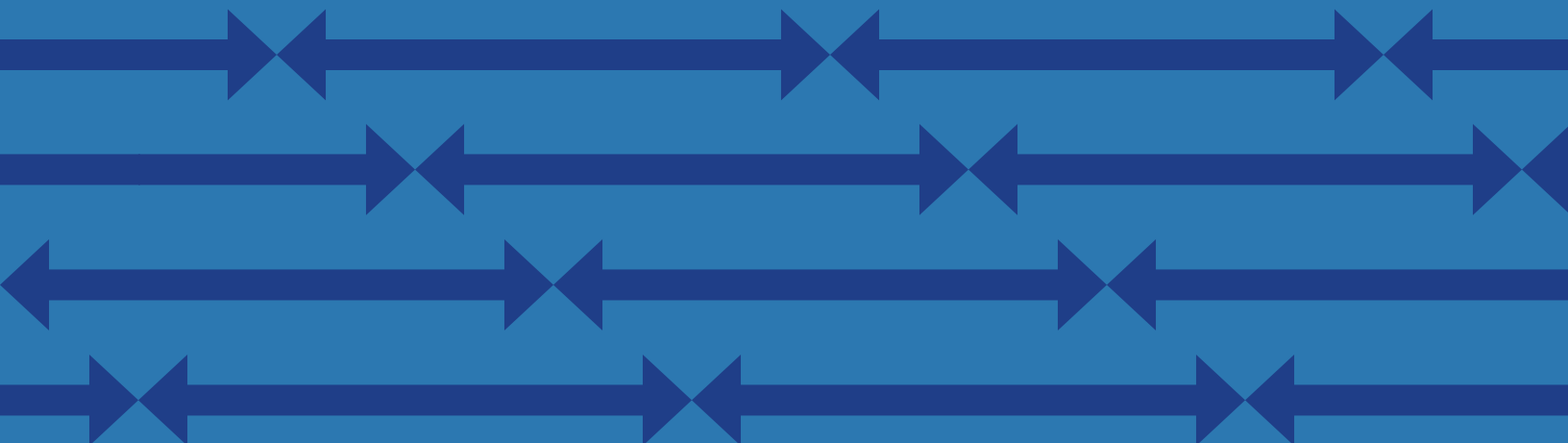


ALBERTA COUNCIL ON ADMISSIONS AND TRANSFER



# TRANSFER PATTERNS REPORT 2008



Alberta Council on Admissions and Transfer

11th Floor, Commerce Place  
10155 102 Street  
Edmonton, Alberta T5J 4L5

Phone	780-422-9021
Toll Free	780-310-0000
Fax	780-422-3688
Email	<a href="mailto:acat@gov.ab.ca">acat@gov.ab.ca</a>
Internet	<a href="http://www.transferalberta.ca">www.transferalberta.ca</a>

Transfer Patterns Report - Fall 2008.  
ISSN 1920-2490 (Print)  
ISSN 1920-2504 (Online)

Copyright (c) 2009, the Crown in Right of the Province of Alberta,  
as represented by the Minister of Advanced Education and Technology

Permission is hereby given by the copyright owner for any person to reproduce this document for  
educational purposes and on a non-profit basis.

# TABLE OF CONTENTS



## **Transfer Patterns - Fall 2008**

Introduction.....	5
Within Province Highlights.....	6
Into-Province Highlights .....	7-9

## **Mobility Tables**

Introduction.....	10
By Sector Charts.....	11-18
Transfer by Sector .....	19
Total Transfers 1998-2008 .....	20

## **Extracts by Sector**

Introduction.....	22
Within Province Transfer - Overall.....	23
Transfer To Sectors .....	24-28
Institutions with Formal University Transfer.....	29-37
All Formal University Transfer Programs.....	38
Other University Transfer Institutions.....	39-41



# INTRODUCTION

The Alberta Council on Admissions and Transfer (ACAT) presents the results of the Fall 2008 Transfer Patterns Study. This study is based on reports from 30 post-secondary institutions who are members of the Alberta Transfer System.

ACAT has been collecting data from institutional Contact Persons since 1979, creating almost three decades of data about the mobility of post-secondary students in Alberta. The report includes mobility within the province, transfer from other Canadian provinces/territories, and from around the world.

The attached Mobility Tables record the number of students admitted for the first time to their post-secondary institutions during the Fall 2008 admission cycle who had reported prior post-secondary experience. The tables show the last post-secondary institution attended as the “sending institution”. Institutions were asked to include students from all programs that are considered “undergraduate” programs at their institution. This would include students in many post-diploma and after-degree programs.

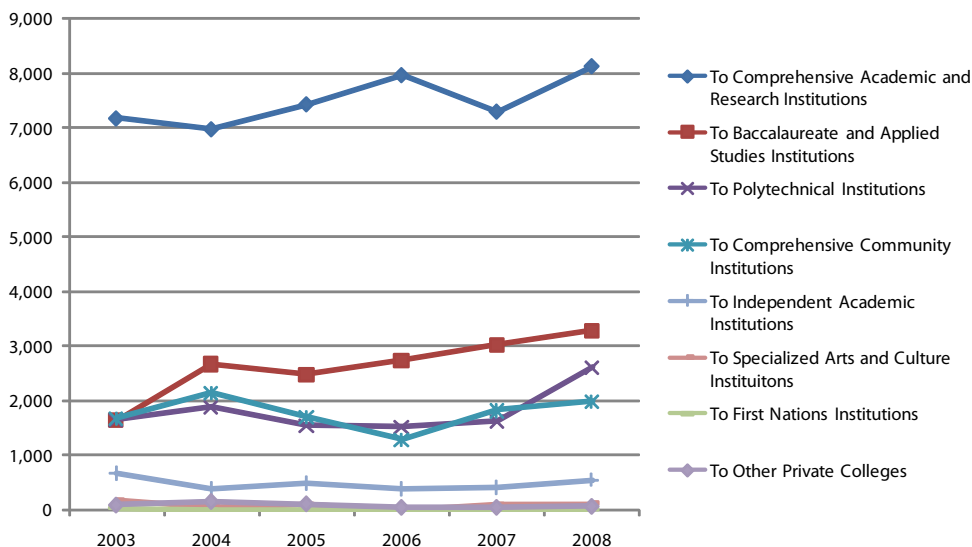
The Mobility Tables do not attempt to show whether or not the student received advanced credit for their previous experience, but rather is an overview of the mobility trends of students attending Alberta post-secondary institutions.

For the Fall 2008 report, slight changes were made to the data requirements in order to more accurately reflect the nature of student mobility in the province. As a result, the numbers may reflect a larger increase in part due to the reporting changes.

## Five Year Trends: 2003 to 2008

### Overall Transfer by Sector

This chart shows the types of institutions students are transferring to from other Alberta institutions and out-of-province institutions over the past five years.



*Note: Please be aware that the numbers provided by Athabasca University (AU) are attuned to its unique role, which allows students to begin a program of study any time during the year. As well, most Athabasca University students do not apply for transfer credit until they have already received 6 credits from AU, so students who have come from other institutions but have not yet received 6 credits from AU may not be represented in the report. As a result of these unique situations related to AU, there is a significant under-representation of the number of transfer students who are currently studying at AU.*

### Institution Sector Changes for Fall 2008

In November 2007, Alberta Advanced Education and Technology released the Roles and Mandates Policy Framework, which outlined specific categories of institutions in the province. These new institution sectors, as outlined in the chart below, are referenced throughout the report.

<b>Comprehensive Academic &amp; Research</b>	Athabasca University, University of Alberta, University of Calgary, University of Lethbridge
<b>Baccalaureate &amp; Applied Studies</b>	Grant MacEwan, Mount Royal
<b>Comprehensive Community</b>	Bow Valley, Grande Prairie, Keyano, Lakeland, Lethbridge, Medicine Hat, NorQuest, Northern Lakes, Olds, Portage, Red Deer
<b>Polytechnical</b>	NAIT, SAIT
<b>Independent Academic</b>	Ambrose, Canadian, Concordia, St. Mary's, Taylor, King's
<b>Specialized Arts &amp; Culture</b>	ACAD, The Banff Centre
<b>First Nations</b>	Blue Quills, Maskwachees, Red Crow, Yellowhead
<b>Other Private</b>	DeVry, Prairie Bible, Rocky Mountain

# WITHIN PROVINCE HIGHLIGHTS

## Fall 2008 Within Province Transfer Highlights

**11,541** students were admitted to a post-secondary institution who had previously attended another Alberta post-secondary institution. This total represents a **24.4%** increase from fall 2007 numbers. All categories showed increases over last year's numbers.

Top Five Receiving Institution Categories			
	Institution Category	Students	% of total
1	<b>Comprehensive Academic &amp; Research (Universities)</b>	5,586	48%
2	<b>Baccalaureate &amp; Applied Studies (Grant MacEwan &amp; Mount Royal)</b>	2,177	19%
3	<b>Polytechnical (NAIT &amp; SAIT)</b>	1,845	16%
4	<b>Comprehensive Community (Public Colleges)</b>	1,401	12%
5	<b>Independent Academic (Private Colleges with Accredited Degree Programs)</b>	424	4%

Top Five Sending Institution Categories			
	Institution Category	Students	% of total
1	<b>Baccalaureate &amp; Applied Studies (Grant MacEwan &amp; Mount Royal)</b>	3,618	33%
2	<b>Comprehensive Academic &amp; Research (Universities)</b>	3,052	28%
3	<b>Comprehensive Community (Public Colleges)</b>	2,542	23%
4	<b>Polytechnical (NAIT &amp; SAIT)</b>	1,233	11%
5	<b>Independent Academic (Private Colleges with Accredited Degree Programs)</b>	431	4%

## Fall 2008 Trends vs. Fall 2007

Overall, within province transfer was up to all sectors vs. Fall 2007. Institution categories showing the largest **percentage** increase include:

<b>Transfer to Polytechnical Institutions</b>	<b>+ 72%</b>
<b>Transfer to Other Private Colleges</b>	<b>+ 70%</b>
<b>Transfer to Independent Academic Institutions</b>	<b>+ 29%</b>

The overall ranking of sending and receiving institutions fluctuated slightly compared to 2007, with the most significant movement seen in the ranking of receiving institutions.

Top 10 Sending Institutions - 2008				
	Institution	Students	2007 rank	2007 Students
1	<b>Grant MacEwan</b>	2,139	1	1,793
2	<b>Mount Royal</b>	1,479	2	1,195
3	<b>University of Alberta</b>	1,329	3	987
4	<b>University of Calgary</b>	788	4	840
5	<b>Red Deer College</b>	727	5	688
6	<b>SAIT</b>	632	6	503
7	<b>NAIT</b>	601	7	481
8	<b>Athabasca University</b>	472	12	235
9	<b>University of Lethbridge</b>	463	8	409
10	<b>Medicine Hat College</b>	366	11	277

Top 10 Receiving Institutions - 2008				
	Institution	Students	2007 rank	2007 Students
1	<b>University of Alberta</b>	2,611	1	2,449
2	<b>University of Calgary</b>	1,644	3	953
3	<b>Grant MacEwan</b>	1,294	2	1,069
4	<b>NAIT</b>	1,069	8	449
5	<b>Mount Royal</b>	883	4	779
6	<b>SAIT</b>	776	7	621
7	<b>University of Lethbridge</b>	773	5	773
8	<b>Athabasca University</b>	558	6	636
9	<b>Lethbridge College</b>	382	9	382
10	<b>Red Deer College</b>	364	10	292

## Overall Transfer since 1979

From 1979 to 2008 the total number of transfer students following specific pathways include:

<b>Transfer from the 9 public colleges with formal university transfer programs to universities</b>	<b>42,902</b>
<b>Transfer from universities to other sectors</b>	<b>118,523</b>
<b>Transfer to technical institutes</b>	<b>38,642</b>
<b>Total transfers from other Alberta post-secondary institutions</b>	<b>235,599</b>

# INTO-PROVINCE HIGHLIGHTS

## Fall 2008 Into Province Transfer Highlights

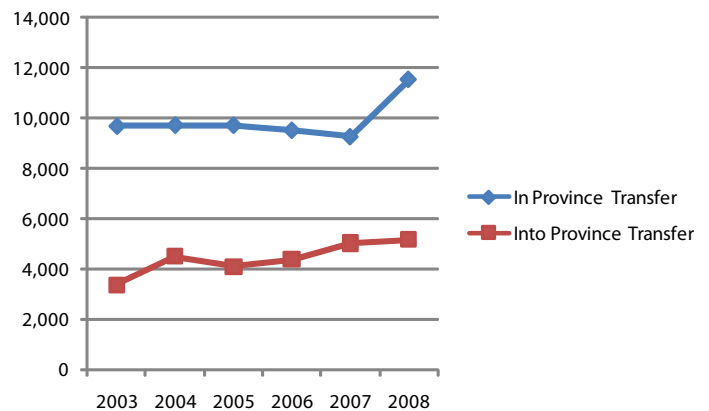
- Transfers into the province in Fall 2008 numbered **5,149** students (including students transferring from other countries), an increase of 837 students or **20.1%** over the previous year's total of 4,172 students, with increases to all sectors except for private colleges with accredited degree programs and other private colleges, which were both down slightly.
- Into-province transfers constituted **35.1%**, while in-province transfers made up 64.9% of the total number of 16,690 students who transferred in 2008. In Fall 2007, into-province transfers constituted 30.4%, while transfers within the province made up 69.6% of the transfer students.
- In 1979, 2,993 students transferred into the province. Into-province transfers constituted 49.2% of the combined total in 1979.

## Into Province Transfer - By Sector

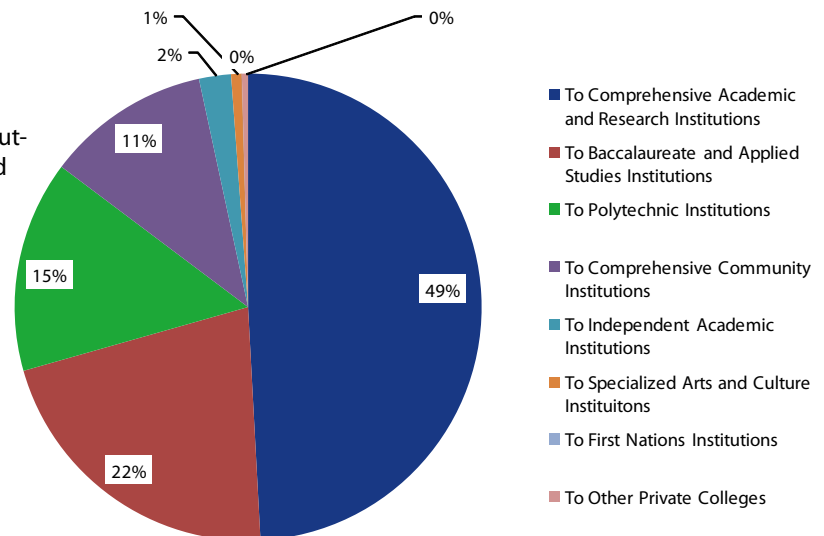
- About half of the students (49.2%) who identified an out-of-province institution as their last institution attended went on to study at a university.

	Into Province			% of total
	F.T.	P.T.	Total	
To Comprehensive Academic and Research Institutions	1,384	1,147	2,531	49%
To Baccalaureate and Applied Studies Institutions	849	255	1,104	21%
To Polytechnical Institutions	639	116	755	15%
To Comprehensive Community Institutions	465	120	585	11%
To Independent Academic Institutions	85	29	114	2%
To Specialized Arts and Culture Institutions	37	1	38	1%
To First Nations Institutions	0	0	0	0%
To Other Private Colleges	13	9	22	0.4%
<b>Grand Total</b>	<b>3,472</b>	<b>1,677</b>	<b>5,149</b>	

## In-province vs. Into-province Transfer



## Into Province Transfer - By Sector



## Top 10 Receiving Institutions - Into Province Transfer 2008

	Institution	Students	2007 rank	2007 Students
1	<b>Athabasca University</b>	1,054	1	1,287
2	<b>University of Calgary</b>	778	6	362
3	<b>Grant MacEwan College</b>	558	4	564
4	<b>Mount Royal College</b>	546	3	603
5	<b>University of Alberta</b>	536	2	677
6	<b>SAIT</b>	460	5	418
7	<b>NAIT</b>	295	10	123
8	<b>University of Lethbridge</b>	163	8	170
9	<b>Red Deer College</b>	148	9	129
10	<b>Lethbridge College</b>	134	7	220

# INTERPROVINCIAL TRANSFERS

## Interprovincial Transfer - Highlights

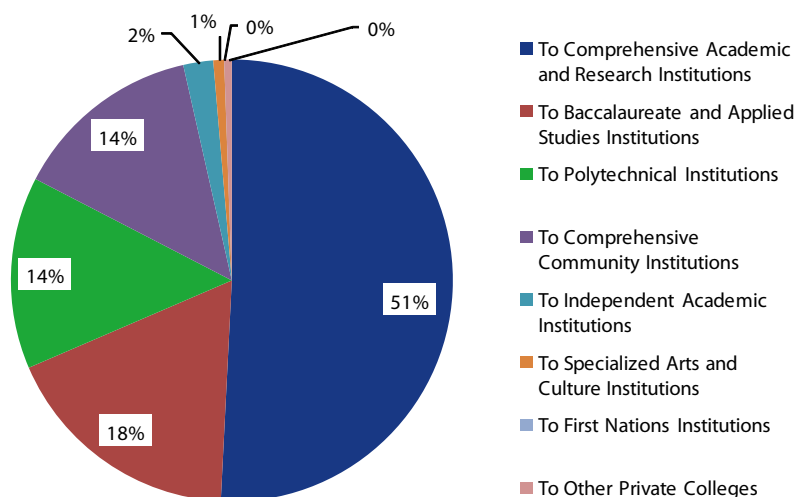
- Interprovincial transfer was down very slightly from 2007, down **1.5%** for a total of **3,929** students coming from institutions in other Canadian jurisdictions.
- The top five provinces for full-time student transfers into the province in Fall 2008 were British Columbia, Ontario, Saskatchewan, Manitoba, and Nova Scotia.
- The top five provinces for part-time students transfers into the province in Fall 2008 were Ontario, British Columbia, Saskatchewan, Manitoba, and Quebec.

## Overall Rank - Interprovincial Transfer

The following charts list the top Canadian sending jurisdictions and institutions, including full-time and part-time students coming to Alberta post-secondary institutions.

Top Canadian Jurisdictions - 2008			
	Jurisdiction	Students	2007 rank
1	<b>Ontario</b>	1,375	1
2	<b>British Columbia</b>	1,060	2
3	<b>Saskatchewan</b>	517	3
4	<b>Manitoba</b>	227	4
5	<b>Nova Scotia</b>	216	5

## Interprovincial Transfer - Destinations



Top 10 Sending Institutions - 2008		
	Institutions	Students
1	<b>University of Saskatchewan</b>	211
2	<b>University of Victoria</b>	117
3	<b>University of British Columbia</b>	110
4	<b>Thompson Rivers University</b>	103
5	<b>University of Manitoba</b>	101
6	<b>Algonquin College</b>	98
7	<b>Saskatchewan Institute of Applied Science and Technology (SIAST)</b>	91
8	<b>University of Regina</b>	82
9	<b>Okanagan College</b>	68
10	<b>University of Toronto</b>	59

Transfer from Other Canadian Jurisdictions	2008	2007	2008	2007	Total 2008	Total 2007	2007 - 2008	
	FT	FT	PT	PT			#	%
<b>British Columbia</b>	815	758	245	237	1,060	995	+65	+7%
<b>Ontario</b>	556	493	819	940	1,375	1,433	-58	-4%
<b>Saskatchewan</b>	417	383	100	109	517	492	+25	+5%
<b>Manitoba</b>	156	148	71	97	227	245	-18	-7%
<b>Quebec</b>	131	93	60	67	191	160	+31	+19%
<b>Nova Scotia</b>	146	129	70	54	216	183	+33	+18%
<b>New Brunswick</b>	68	43	27	37	95	80	+15	+19%
<b>Newfoundland</b>	62	62	43	44	105	106	-1	-1%
<b>Northwest Territories</b>	62	24	11	2	73	26	+47	+181%
<b>Yukon Territory</b>	17	16	1	2	18	18	0	0%
<b>Prince Edward Island</b>	18	11	7	12	25	23	+2	+9%
<b>Nunavut</b>	1	0	0	0	1	0	+1	+100%
<b>Unknown/Other</b>	0	167	26	62	26	229	-203	-89%
<b>TOTAL:</b>	<b>2,449</b>	<b>2,327</b>	<b>1,480</b>	<b>1,663</b>	<b>3,929</b>	<b>3,990</b>	<b>-61</b>	<b>-1.5%</b>



# INTERNATIONAL TRANSFERS

Highest areas of origin for international transfer students were Asia, North America, and Europe. The total number of international transfer students reported was up from 2007, as shown in the chart at the bottom of the page.

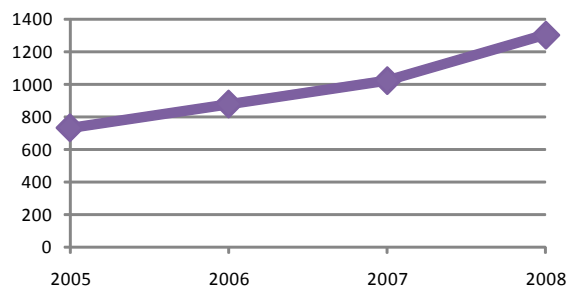
Alberta institutions received a total of **1,297** students from **80** different countries. The top sending countries are listed in the following chart.

## International Transfer - By Country

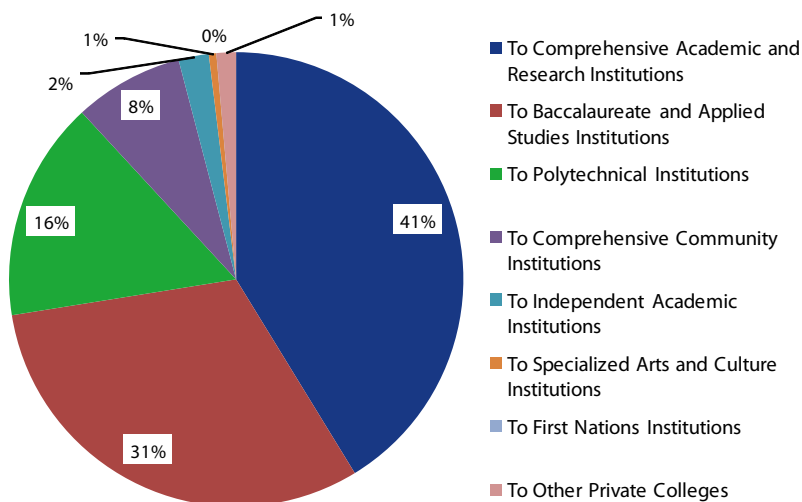
Top 10 Sending Countries - 2008		
	Countries	Students
1	<b>United States</b>	239
2	<b>China</b>	202
3	<b>India</b>	41
4	<b>Ukraine</b>	32
5	<b>United Kingdom</b>	32
6	<b>Philippines</b>	28
7	<b>Australia</b>	13
8	<b>South Korea</b>	12
9	<b>New Zealand</b>	12
10	<b>United Arab Emirates</b>	11

## Total International Transfer - 2005 to 2008

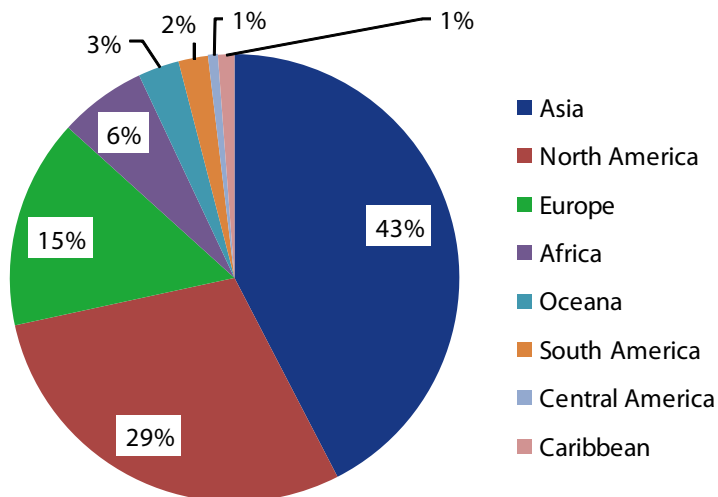
This chart shows the trend of students coming from institutions outside of Canada over the past four years.



## International Transfer - By Sector



## International Transfer - By Region



Region	2008	2007	2008	2007	Total 2008	Total 2007	2007 - 2008	
	FT	FT	PT	PT			#	%
<b>Asia</b>	337	240	20	34	357	274	+83	+30 %
<b>North America</b>	200	154	46	50	246	204	+42	+21%
<b>Europe</b>	111	65	16	23	127	88	+39	+44%
<b>Africa</b>	42	49	11	10	53	59	-6	-10%
<b>Oceania</b>	25	7	0	5	25	12	+13	+108%
<b>South America</b>	16	7	2	4	18	11	+7	+64%
<b>Central America</b>	5	4	1	3	6	4	+2	+50%
<b>Caribbean</b>	7	4	3	2	10	6	+4	+67%
<b>Unknown/Other</b>	333	294	122	67	455	361	+94	+26%
<b>TOTAL:</b>	<b>1,076</b>	<b>821</b>	<b>221</b>	<b>198</b>	<b>1,297</b>	<b>1,019</b>	<b>+278</b>	<b>+27%</b>

# MOBILITY TABLES

Since 1979, ACAT has collected information annually from post-secondary institutions about the number of students with prior post-secondary experience who move to another post-secondary institution. Each post-secondary institution was asked to record the number of students admitted for the first time to their institutions during the Fall 2008 admission cycle who had reported prior post-secondary experience.

## NOTES:

- The data parameters have changed slightly for the Fall 2008 to be more inclusive of students in all undergraduate programs, and to include students who may have left an institution and later returned to study there again. As a result, the mobility numbers reflected may be slightly higher.
- These data do not indicate whether these students received advance credit for their prior post-secondary experience.
- The data does not indicate if the post-secondary studies were used for admission to a program at the receiving institution.
- As admission records vary among the diverse institutions reporting on the following tables, strict comparability may be difficult.
- The reported totals may not fully reflect mobility as some admissions categories may be incompletely reported: for example, part-time students at non-university public institutions, visiting students, unclassified students, and students who are enrolled at two institutions at the same time.
- As Athabasca University offers continuous admission, students often take one course at a time so the distinction between “full-time” and “part-time” may not be appropriate. AU distinguished between “full-time” and “part-time” in its reports for 1993-1996. Since then, AU’s entry has been displayed as “part-time” although it includes an undetermined, though probably small, number of “full-time” students. Because of its continuous admission policy, the Fall 2008 admission cycle is defined as the number of new students admitted to Athabasca University between January 1, 2008 through September 30, 2008. Prior to 1999, AU’s reporting period covered the five month period from May 1 through September 30.

FALL 2008 MOBILITY TABLES		
Number of Full-time and Part-time students transferring to Alberta:		
Table 1	Comprehensive Academic and Research Institutions	Page 11
Table 2	Baccalaureate and Applied Studies Institutions	Page 12
Table 3	Polytechnical Institutions	Page 13
Table 4	Comprehensive Community Institutions	Page 14
Table 5	Independent Academic Institutions	Page 16
Table 6	Specialized Arts and Culture Institutions	Page 17
Table 7	First Nations Institutions	Page 18
Table 8	Other Private Colleges	Page 19
Summary Tables:		
Table 9	Total number of students transferring by sector - Fall 2008	Page 20
Table 10	Total number of students transferring by sector - 1998 - 2008	Page 21

# 1. TO COMPREHENSIVE ACADEMIC & RESEARCH INSTITUTIONS

FALL 2008

SENDING INSTITUTION	RECEIVING INSTITUTION										
	Athabasca		UofA		UofC		UofL		Total		GRAND TOTAL
	F.T	P.T.	F.T	P.T.	F.T	P.T.	F.T	P.T.	F.T	P.T.	
<b>Comprehensive Academic and Research Institutions</b>											
Athabasca University			69	6	149	11	14	3	232	20	<b>252</b>
University of Alberta		45			82		20	2	102	47	<b>149</b>
University of Calgary		23	104			2	33	3	137	28	<b>165</b>
The University of Lethbridge		10	63	1	57	3		1	120	15	<b>135</b>
TOTAL		78	236	7	288	16	67	9	591	110	<b>701</b>
<b>Baccalaureate and Applied Studies Institutions</b>											
Grant MacEwan College		84	1391	31	55	4	59	11	1505	130	<b>1635</b>
Mount Royal College		72	74		732	50	122	3	928	125	<b>1053</b>
TOTAL		156	1465	31	787	54	181	14	2433	255	<b>2688</b>
<b>Polytechnical Institutions</b>											
NAIT		55	70	6	9	2	39	11	118	74	<b>192</b>
SAIT		52	14	1	151	15	83	18	248	86	<b>334</b>
TOTAL		107	84	7	160	17	122	29	366	160	<b>526</b>
<b>Comprehensive Community Institutions</b>											
Bow Valley College		28	1		5	2	2		8	30	<b>38</b>
Grande Prairie Regional College		26	150	3	16		14	1	180	30	<b>210</b>
Keyano College		3	56	1	8		6	1	70	5	<b>75</b>
Lakeland College		21	24		4		3		31	21	<b>52</b>
Lethbridge College		41	11	1	12		127	18	150	60	<b>210</b>
Medicine Hat College		24	78		76	1	87	2	241	27	<b>268</b>
NorQuest College		26	2				1		3	26	<b>29</b>
Northern Lakes College		1	6		5				11	1	<b>12</b>
Olds College		1	6		3		11		20	1	<b>21</b>
Portage College		4			1			1	1	5	<b>6</b>
Red Deer College		31	321	1	100	3	45	1	466	36	<b>502</b>
TOTAL		206	655	6	230	6	296	24	1181	242	<b>1423</b>
<b>Independent Academic Institutions</b>											
Ambrose University College		2	3		11		1		15	2	<b>17</b>
Canadian University College			1	1	1				2	1	<b>3</b>
Concordia University College of Alberta		3	61	2	3		1		65	5	<b>70</b>
St. Mary's University College			4		33	2	17		54	2	<b>56</b>
Taylor University College			5		3				8	0	<b>8</b>
The King's University College		1	24	1	5				29	2	<b>31</b>
TOTAL		6	98	4	56	2	19	0	173	12	<b>185</b>
<b>Specialized Arts and Culture Institutions</b>											
Alberta College of Art + Design			4		8	3	1		13	3	<b>16</b>
The Banff Centre									0	0	<b>0</b>
TOTAL		0	4	0	8	3	1	0	13	3	<b>16</b>
<b>First Nations Institutions</b>											
Blue Quills First Nations College					1				1	0	<b>1</b>
Maskwachees Cultural College			1		3				4	0	<b>4</b>
Red Crow Community College							4	2	4	2	<b>6</b>
Yellowhead Tribal College			4						4	0	<b>4</b>
TOTAL		0	5	0	4	0	4	2	13	2	<b>15</b>
<b>Other Private Colleges</b>											
DeVry Institute of Technology					3				3	0	<b>3</b>
Prairie Bible College			1					1	1	1	<b>2</b>
Rocky Mountain College					1				1	0	<b>1</b>
TOTAL		0	1	0	4	0	0	1	5	1	<b>6</b>
<b>Other Within-Province Institutions*</b>											
		5	8		7	2	3	1	18	8	<b>26</b>
<b>TOTAL WITHIN-PROVINCE</b>		<b>558</b>	<b>2556</b>	<b>55</b>	<b>1544</b>	<b>100</b>	<b>693</b>	<b>80</b>	<b>4793</b>	<b>793</b>	<b>5586</b>
<b>TOTAL INTO-PROVINCE</b>		<b>1054</b>	<b>498</b>	<b>38</b>	<b>736</b>	<b>42</b>	<b>150</b>	<b>13</b>	<b>1384</b>	<b>1147</b>	<b>2531</b>
<b>TOTAL TRANSFER STUDENTS</b>		<b>1612</b>	<b>3054</b>	<b>93</b>	<b>2280</b>	<b>142</b>	<b>843</b>	<b>93</b>	<b>6177</b>	<b>1940</b>	<b>8117</b>

\* "Other Within-Province Institutions" refers to Alberta post-secondary institutions who are not members of the Alberta Transfer System.

## 2. TO BACCALAUREATE & APPLIED STUDIES INSTITUTIONS

FALL 2008

SENDING INSTITUTION	RECEIVING INSTITUTION						GRAND TOTAL
	Grant MacEwan		Mount Royal		Total		
	F.T.	P.T.	F.T.	P.T.	F.T.	P.T.	
<b>Comprehensive Academic and Research Institutions</b>							
Athabasca University	54	2	36	28	90	30	120
University of Alberta	514	7	48	24	562	31	593
University of Calgary	29		191	94	220	94	314
The University of Lethbridge	19		40	13	59	13	72
TOTAL	616	9	315	159	931	168	1099
<b>Baccalaureate and Applied Studies Institutions</b>							
Grant MacEwan College			22	8	22	8	30
Mount Royal College	30	1	3	6	33	7	40
TOTAL	30	1	25	14	55	15	70
<b>Polytechnical Institutions</b>							
NAIT	195	2	9	2	204	4	208
SAIT	11		107	36	118	36	154
TOTAL	206	2	116	38	322	40	362
<b>Comprehensive Community Institutions</b>							
Bow Valley College		1	18	12	18	13	31
Grande Prairie Regional College	29		8	3	37	3	40
Keyano College	23		5	6	28	6	34
Lakeland College	17		4		21	0	21
Lethbridge College	17	1	15	2	32	3	35
Medicine Hat College	13		13	4	26	4	30
NorQuest College	81	1	1	1	82	2	84
Northern Lakes College	4				4	0	4
Olds College	1	1	8	2	9	3	12
Portage College	1		2	1	3	1	4
Red Deer College	44	1	19	8	63	9	72
TOTAL	230	5	93	39	323	44	367
<b>Independent Academic Institutions</b>							
Ambrose University College	4		5	2	9	2	11
Canadian University College	4		3		7	0	7
Concordia University College of Alberta	54			1	54	1	55
St. Mary's University College	1		23	8	24	8	32
Taylor University College	8			1	8	1	9
The King's University College	15		2		17	0	17
TOTAL	86	0	33	12	119	12	131
<b>Specialized Arts and Culture Institutions</b>							
Alberta College of Art + Design	3		10	3	13	3	16
The Banff Centre					0	0	0
TOTAL	3	0	10	3	13	3	16
<b>First Nations Institutions</b>							
Blue Quills First Nations College	1				1	0	1
Maskwachees Cultural College	2		1		3	0	3
Red Crow Community College					0	0	0
Yellowhead Tribal College	3				3	0	3
TOTAL	6	0	1	0	7	0	7
<b>Other Private Colleges</b>							
DeVry Institute of Technology			8	2	8	2	10
Prairie Bible College	5		1	1	6	1	7
Rocky Mountain College	3		1	1	4	1	5
TOTAL	8	0	10	4	18	4	22
<b>Other Within-Province Institutions*</b>							
	90	2	7	4	97	6	103
<b>TOTAL WITHIN-PROVINCE</b>	<b>1275</b>	<b>19</b>	<b>610</b>	<b>273</b>	<b>1885</b>	<b>292</b>	<b>2177</b>
<b>TOTAL INTO-PROVINCE</b>	<b>536</b>	<b>22</b>	<b>313</b>	<b>233</b>	<b>849</b>	<b>255</b>	<b>1104</b>
<b>TOTAL TRANSFER STUDENTS</b>	<b>1811</b>	<b>41</b>	<b>923</b>	<b>506</b>	<b>2734</b>	<b>547</b>	<b>3281</b>

\*"Other Within-Province Institutions" refers to Alberta post-secondary institutions who are not members of the Alberta Transfer System.

### 3. TO POLYTECHNICAL INSTITUTIONS

FALL 2008

SENDING INSTITUTION	RECEIVING INSTITUTION						GRAND TOTAL
	NAIT		SAIT		Total		
	F.T.	P.T.	F.T.	P.T.	F.T.	P.T.	
<b>Comprehensive Academic and Research Institutions</b>							
Athabasca University	12	1	10	4	22	5	27
University of Alberta	368	1	22	3	390	4	394
University of Calgary	10		145	42	155	42	197
The University of Lethbridge	11		30	3	41	3	44
TOTAL	401	2	207	52	608	54	662
<b>Baccalaureate and Applied Studies Institutions</b>							
Grant MacEwan College	268	4	13	1	281	5	286
Mount Royal College	13		179	49	192	49	241
TOTAL	281	4	192	50	473	54	527
<b>Polytechnical Institutions</b>							
NAIT			23	7	23	7	30
SAIT	21				21	0	21
TOTAL	21	0	23	7	44	7	51
<b>Comprehensive Community Institutions</b>							
Bow Valley College	1		21	6	22	6	28
Grande Prairie Regional College	28		9		37	0	37
Keyano College	15	1	5	1	20	2	22
Lakeland College	14		2	1	16	1	17
Lethbridge College	15		18	5	33	5	38
Medicine Hat College	2		17	4	19	4	23
NorQuest College	48	2		1	48	3	51
Northern Lakes College	7				7	0	7
Olds College	4		7	2	11	2	13
Portage College	7		3		10	0	10
Red Deer College	33		26	1	59	1	60
TOTAL	174	3	108	21	282	24	306
<b>Independent Academic Institutions</b>							
Ambrose University College					0	0	0
Canadian University College	3		1	1	4	1	5
Concordia University College of Alberta	37		2		39	0	39
St. Mary's University College			8	2	8	2	10
Taylor University College					0	0	0
The King's University College	7		3		10	0	10
TOTAL	47	0	14	3	61	3	64
<b>Specialized Arts and Culture Institutions</b>							
Alberta College of Art + Design	1		10	2	11	2	13
The Banff Centre					0	0	0
TOTAL	1	0	10	2	11	2	13
<b>First Nations Institutions</b>							
Blue Quills First Nations College					0	0	0
Maskwachees Cultural College					0	0	0
Red Crow Community College					0	0	0
Yellowhead Tribal College					0	0	0
TOTAL	0	0	0	0	0	0	0
<b>Other Private Colleges</b>							
DeVry Institute of Technology	3		6	5	9	5	14
Prairie Bible College			1		1	0	1
Rocky Mountain College			3		3	0	3
TOTAL	3	0	10	5	13	5	18
<b>Other Within-Province Institutions*</b>							
	128	4	44	28	172	32	204
<b>TOTAL WITHIN-PROVINCE</b>	<b>1056</b>	<b>13</b>	<b>608</b>	<b>168</b>	<b>1664</b>	<b>181</b>	<b>1845</b>
<b>TOTAL INTO-PROVINCE</b>	<b>294</b>	<b>1</b>	<b>345</b>	<b>115</b>	<b>639</b>	<b>116</b>	<b>755</b>
<b>TOTAL TRANSFER STUDENTS</b>	<b>1350</b>	<b>14</b>	<b>953</b>	<b>283</b>	<b>2303</b>	<b>297</b>	<b>2600</b>

\* "Other Within-Province Institutions" refers to Alberta post-secondary institutions who are not members of the Alberta Transfer System.

# 4. TO COMPREHENSIVE COMMUNITY INSTITUTIONS

FALL 2008

SENDING INSTITUTION	RECEIVING INSTITUTION											
	Bow Valley		Grande Prairie		Keyano		Lakeland		Lethbridge		Medicine Hat	
	F.T	P.T.	F.T	P.T.	F.T	P.T.	F.T	P.T.	F.T	P.T.	F.T	P.T.
<b>Comprehensive Academic and Research Institutions</b>												
Athabasca University				1		1			5	3	6	2
University of Alberta	1		5		5		7	3	13	2	11	2
University of Calgary	2		1		1	2	1	1	12	3	5	3
The University of Lethbridge	1		2		1				145	19	8	1
TOTAL	4	0	8	1	7	3	8	4	175	27	30	8
<b>Baccalaureate and Applied Studies Institutions</b>												
Grant MacEwan College			2	6	6	2	10		9	9	7	1
Mount Royal College	11	2	2			1	1	1	25	1	10	3
TOTAL	11	2	4	6	6	3	11	1	34	10	17	4
<b>Polytechnical Institutions</b>												
NAIT	1	1	6	1	2	1	4	6	10	1	3	
SAIT	6	7	3		3	2	3	3	22	1	10	1
TOTAL	7	8	9	1	5	3	7	9	32	2	13	1
<b>Comprehensive Community Institutions</b>												
Bow Valley College									15	2		
Grande Prairie Regional College							2		6	3	4	
Keyano College			1				3	1	1			1
Lakeland College			2	2		1			1		1	1
Lethbridge College	1			2	1	1	2				14	
Medicine Hat College		1	3	1			1	1	25	1		
NorQuest College			1		4		3		11		2	1
Northern Lakes College		3	3			2						
Olds College				1		1	7		3		2	
Portage College					3		3	1	1			
Red Deer College	2	2	2		2	4	5		13	4	7	4
TOTAL	3	6	12	6	10	9	26	3	76	10	30	7
<b>Independent Academic Institutions</b>												
Ambrose University College												
Canadian University College												
Concordia University College of Alberta			1		2		1		2			
St. Mary's University College									1			
Taylor University College												1
The King's University College							1	1	1			
TOTAL	0	0	1	0	2	0	2	1	4	0	0	1
<b>Specialized Arts and Culture Institutions</b>												
Alberta College of Art + Design			1	1						1	3	
The Banff Centre												
TOTAL	0	0	1	1	0	0	0	0	0	1	3	0
<b>First Nations Institutions</b>												
Blue Quills First Nations College												
Maskwachees Cultural College												
Red Crow Community College	1								8			
Yellowhead Tribal College												
TOTAL	1	0	0	0	0	0	0	0	8	0	0	0
<b>Other Private Colleges</b>												
DeVry Institute of Technology												1
Prairie Bible College			1						1			
Rocky Mountain College												
TOTAL	0	0	1	0	0	0	0	0	1	0	0	1
<b>Other Within-Province Institutions*</b>												
	1		6	3			3		2		7	1
<b>TOTAL WITHIN-PROVINCE</b>	<b>27</b>	<b>16</b>	<b>42</b>	<b>18</b>	<b>30</b>	<b>18</b>	<b>57</b>	<b>18</b>	<b>332</b>	<b>50</b>	<b>100</b>	<b>23</b>
<b>TOTAL INTO-PROVINCE</b>					<b>55</b>	<b>22</b>	<b>106</b>	<b>18</b>	<b>113</b>	<b>21</b>	<b>62</b>	<b>9</b>
<b>TOTAL TRANSFER STUDENTS</b>	<b>27</b>	<b>16</b>	<b>42</b>	<b>18</b>	<b>85</b>	<b>40</b>	<b>163</b>	<b>36</b>	<b>445</b>	<b>71</b>	<b>162</b>	<b>32</b>

\* "Other Within-Province Institutions" refers to Alberta post-secondary institutions who are not members of the Alberta Transfer System.

SENDING INSTITUTION	RECEIVING INSTITUTION													GRAND TOTAL
	NorQuest		Northern Lakes		Olds		Portage		Red Deer		Total			
	F.T.	P.T.	F.T.	P.T.	F.T.	P.T.	F.T.	P.T.	F.T.	P.T.	F.T.	P.T.		
<b>Comprehensive Academic and Research Institutions</b>														
Athabasca University				1			1		15	6	27	14	41	
University of Alberta	4	5		1	1	1	2		19	10	68	24	92	
University of Calgary	1			1	1	2		1	12	5	36	18	54	
The University of Lethbridge	1	2			1	2	2		4	6	165	30	195	
TOTAL	6	7	0	3	3	5	5	1	50	27	296	86	382	
<b>Baccalaureate and Applied Studies Institutions</b>														
Grant MacEwan College	13	11		1	1	1	6	1	14	3	68	35	103	
Mount Royal College	2	3	1	1	12		2		8	8	74	20	94	
TOTAL	15	14	1	2	13	1	8	1	22	11	142	55	197	
<b>Polytechnical Institutions</b>														
NAIT	20	17	5	2	1		8		41	3	101	32	133	
SAIT	3	5	2	1	10		1	1	18	4	81	25	106	
TOTAL	23	22	7	3	11	0	9	1	59	7	182	57	239	
<b>Comprehensive Community Institutions</b>														
Bow Valley College	3	6			1				2	2	21	10	31	
Grande Prairie Regional College	1	3		1					7	3	20	10	30	
Keyano College	3	1					3		5	3	16	6	22	
Lakeland College		2			2		2	1	10	2	18	9	27	
Lethbridge College	1	1			3	2	1	2	6	6	29	14	43	
Medicine Hat College			1		2				6	1	38	5	43	
NorQuest College				1			8		10	6	39	8	47	
Northern Lakes College	5						3		2	1	13	6	19	
Olds College									17	1	29	3	32	
Portage College	7	1	1	1					5	4	20	7	27	
Red Deer College	4	12	1		2	2	1				39	28	67	
TOTAL	24	26	3	3	10	4	18	3	70	29	282	106	388	
<b>Independent Academic Institutions</b>														
Ambrose University College									1	1	1	1	2	
Canadian University College					1				1		2	0	2	
Concordia University College of Alberta							1		2	5	9	5	14	
St. Mary's University College									1		2	0	2	
Taylor University College											0	1	1	
The King's University College									3	1	5	2	7	
TOTAL	0	0	0	0	1	0	1	0	8	7	19	9	28	
<b>Specialized Arts and Culture Institutions</b>														
Alberta College of Art + Design											4	2	6	
The Banff Centre											0	0	0	
TOTAL	0	0	0	0	0	0	0	0	0	0	4	2	6	
<b>First Nations Institutions</b>														
Blue Quills First Nations College	1						5				6	0	6	
Maskwachees Cultural College								1			0	1	1	
Red Crow Community College											9	0	9	
Yellowhead Tribal College											0	0	0	
TOTAL	1	0	0	0	0	0	5	1	0	0	15	1	16	
<b>Other Private Colleges</b>														
DeVry Institute of Technology									3	1	3	2	5	
Prairie Bible College									3		5	0	5	
Rocky Mountain College											0	0	0	
TOTAL	0	0	0	0	0	0	0	0	6	1	8	2	10	
<b>Other Within-Province Institutions*</b>														
	26	18			1				51	16	97	38	135	
<b>TOTAL WITHIN-PROVINCE</b>	<b>95</b>	<b>87</b>	<b>11</b>	<b>11</b>	<b>39</b>	<b>10</b>	<b>46</b>	<b>7</b>	<b>266</b>	<b>98</b>	<b>1045</b>	<b>356</b>	<b>1401</b>	
<b>TOTAL INTO-PROVINCE</b>	<b>4</b>	<b>2</b>	<b>5</b>	<b>3</b>	<b>14</b>	<b>3</b>			<b>106</b>	<b>42</b>	<b>465</b>	<b>120</b>	<b>585</b>	
<b>TOTAL TRANSFER STUDENTS</b>	<b>99</b>	<b>89</b>	<b>16</b>	<b>14</b>	<b>53</b>	<b>13</b>	<b>46</b>	<b>7</b>	<b>372</b>	<b>140</b>	<b>1510</b>	<b>476</b>	<b>1986</b>	

\* "Other Within-Province Institutions" refers to Alberta post-secondary institutions who are not members of the Alberta Transfer System.



# 5. TO INDEPENDENT ACADEMIC INSTITUTIONS

FALL 2008

SENDING INSTITUTION	RECEIVING INSTITUTION														GRAND TOTAL
	Ambrose		Canadian		Concordia		St. Mary's		Taylor		King's		Total		
	F.T.	P.T.	F.T.	P.T.	F.T.	P.T.	F.T.	P.T.	F.T.	P.T.	F.T.	P.T.	F.T.	P.T.	
<b>Comprehensive Academic and Research Institutions</b>															
Athabasca University					12	7	2	2			7		21	9	30
University of Alberta	1			1	50	12	4	2			22	7	77	22	99
University of Calgary	1		1		1	2	19	19			1		23	21	44
The University of Lethbridge			1		5	2	4	2					10	4	14
<b>TOTAL</b>	<b>2</b>	<b>0</b>	<b>2</b>	<b>1</b>	<b>68</b>	<b>23</b>	<b>29</b>	<b>25</b>	<b>0</b>	<b>0</b>	<b>30</b>	<b>7</b>	<b>131</b>	<b>56</b>	<b>187</b>
<b>Baccalaureate and Applied Studies Institutions</b>															
Grant MacEwan College	1		1		52	12					11	1	65	13	78
Mount Royal College	6				2		18	8			1		26	9	35
<b>TOTAL</b>	<b>7</b>	<b>0</b>	<b>1</b>	<b>0</b>	<b>54</b>	<b>12</b>	<b>18</b>	<b>8</b>	<b>0</b>	<b>0</b>	<b>11</b>	<b>2</b>	<b>91</b>	<b>22</b>	<b>113</b>
<b>Polytechnical Institutions</b>															
NAIT					26	2					7	1	33	3	36
SAIT	1						8	4					9	4	13
<b>TOTAL</b>	<b>1</b>	<b>0</b>	<b>0</b>	<b>0</b>	<b>26</b>	<b>2</b>	<b>8</b>	<b>4</b>	<b>0</b>	<b>0</b>	<b>7</b>	<b>1</b>	<b>42</b>	<b>7</b>	<b>49</b>
<b>Comprehensive Community Institutions</b>															
Bow Valley College			1				2						3	0	3
Grande Prairie Regional College					2								2	0	2
Keyano College					1						1		2	0	2
Lakeland College					2	1							2	1	3
Lethbridge College													0	0	0
Medicine Hat College											1		1	0	1
NorQuest College					4	1					1		5	1	6
Northern Lakes College					1								1	0	1
Olds College					1		2						3	0	3
Portage College					1								1	0	1
Red Deer College					5		2				5		12	0	12
<b>TOTAL</b>	<b>0</b>	<b>0</b>	<b>1</b>	<b>0</b>	<b>17</b>	<b>2</b>	<b>6</b>	<b>0</b>	<b>0</b>	<b>0</b>	<b>8</b>	<b>0</b>	<b>32</b>	<b>2</b>	<b>34</b>
<b>Independent Academic Institutions</b>															
Ambrose University College							2						2	0	2
Canadian University College													0	0	0
Concordia University College											1		0	1	1
St. Mary's University College					1								1	0	1
Taylor University College		1		1	3						1		3	3	6
The King's University College					4	2							4	2	6
<b>TOTAL</b>	<b>0</b>	<b>1</b>	<b>0</b>	<b>1</b>	<b>8</b>	<b>2</b>	<b>2</b>	<b>0</b>	<b>0</b>	<b>0</b>	<b>0</b>	<b>2</b>	<b>10</b>	<b>6</b>	<b>16</b>
<b>Specialized Arts and Culture Institutions</b>															
Alberta College of Art + Design													0	0	0
The Banff Centre													0	0	0
<b>TOTAL</b>	<b>0</b>	<b>0</b>	<b>0</b>	<b>0</b>	<b>0</b>	<b>0</b>	<b>0</b>	<b>0</b>	<b>0</b>	<b>0</b>	<b>0</b>	<b>0</b>	<b>0</b>	<b>0</b>	<b>0</b>
<b>First Nations Institutions</b>															
Blue Quills First Nations College													0	0	0
Maskwachees Cultural College					1								1	0	1
Red Crow Community College													0	0	0
Yellowhead Tribal College													0	0	0
<b>TOTAL</b>	<b>0</b>	<b>0</b>	<b>0</b>	<b>0</b>	<b>1</b>	<b>0</b>	<b>0</b>	<b>0</b>	<b>0</b>	<b>0</b>	<b>0</b>	<b>0</b>	<b>1</b>	<b>0</b>	<b>1</b>
<b>Other Private Colleges</b>															
DeVry Institute of Technology													0	0	0
Prairie Bible College	2										2	1	4	1	5
Rocky Mountain College													0	0	0
<b>TOTAL</b>	<b>2</b>	<b>0</b>	<b>0</b>	<b>0</b>	<b>0</b>	<b>0</b>	<b>0</b>	<b>0</b>	<b>0</b>	<b>0</b>	<b>2</b>	<b>1</b>	<b>4</b>	<b>1</b>	<b>5</b>
<b>Other Within-Province Institutions*</b>															
<b>TOTAL WITHIN-PROVINCE</b>	<b>13</b>	<b>1</b>	<b>4</b>	<b>2</b>	<b>179</b>	<b>46</b>	<b>65</b>	<b>37</b>	<b>0</b>	<b>0</b>	<b>64</b>	<b>13</b>	<b>325</b>	<b>99</b>	<b>424</b>
<b>TOTAL INTO-PROVINCE</b>	<b>6</b>	<b></b>	<b>12</b>	<b>1</b>	<b>40</b>	<b>20</b>	<b>9</b>	<b>6</b>	<b></b>	<b></b>	<b>18</b>	<b>2</b>	<b>85</b>	<b>29</b>	<b>114</b>
<b>TOTAL TRANSFER STUDENTS</b>	<b>19</b>	<b>1</b>	<b>16</b>	<b>3</b>	<b>219</b>	<b>66</b>	<b>74</b>	<b>43</b>	<b>0</b>	<b>0</b>	<b>82</b>	<b>15</b>	<b>410</b>	<b>128</b>	<b>538</b>

\* "Other Within-Province Institutions" refers to Alberta post-secondary institutions who are not members of the Alberta Transfer System.



## 6. TO SPECIALIZED ARTS & CULTURE INSTITUTIONS

FALL 2008

SENDING INSTITUTION	RECEIVING INSTITUTION						GRAND TOTAL
	ACAD		Banff Centre		Total		
	F.T.	P.T.	F.T.	P.T.	F.T.	P.T.	
<b>Comprehensive Academic and Research Institutions</b>							
Athabasca University	1				1	0	1
University of Alberta	1				1	0	1
University of Calgary	9	3			9	3	12
The University of Lethbridge	3				3	0	3
<b>TOTAL</b>	<b>14</b>	<b>3</b>	<b>0</b>	<b>0</b>	<b>14</b>	<b>3</b>	<b>17</b>
<b>Baccalaureate and Applied Studies Institutions</b>							
Grant MacEwan College	6				6	0	6
Mount Royal College	9	2			9	2	11
<b>TOTAL</b>	<b>15</b>	<b>2</b>	<b>0</b>	<b>0</b>	<b>15</b>	<b>2</b>	<b>17</b>
<b>Polytechnical Institutions</b>							
NAIT	2				2	0	2
SAIT	4				4	0	4
<b>TOTAL</b>	<b>6</b>	<b>0</b>	<b>0</b>	<b>0</b>	<b>6</b>	<b>0</b>	<b>6</b>
<b>Comprehensive Community Institutions</b>							
Bow Valley College					0	0	0
Grande Prairie Regional College	5				5	0	5
Keyano College	1				1	0	1
Lakeland College					0	0	0
Lethbridge College	2				2	0	2
Medicine Hat College	1				1	0	1
NorQuest College					0	0	0
Northern Lakes College					0	0	0
Olds College					0	0	0
Portage College					0	0	0
Red Deer College	10	2			10	2	12
<b>TOTAL</b>	<b>19</b>	<b>2</b>	<b>0</b>	<b>0</b>	<b>19</b>	<b>2</b>	<b>21</b>
<b>Independent Academic Institutions</b>							
Ambrose University College					0	0	0
Canadian University College					0	0	0
Concordia University College of Alberta	3				3	0	3
St. Mary's University College	2				2	0	2
Taylor University College					0	0	0
The King's University College					0	0	0
<b>TOTAL</b>	<b>5</b>	<b>0</b>	<b>0</b>	<b>0</b>	<b>5</b>	<b>0</b>	<b>5</b>
<b>Specialized Arts and Culture Institutions</b>							
Alberta College of Art + Design					0	0	0
The Banff Centre					0	0	0
<b>TOTAL</b>	<b>0</b>	<b>0</b>	<b>0</b>	<b>0</b>	<b>0</b>	<b>0</b>	<b>0</b>
<b>First Nations Institutions</b>							
Blue Quills First Nations College					0	0	0
Maskwachees Cultural College					0	0	0
Red Crow Community College					0	0	0
Yellowhead Tribal College					0	0	0
<b>TOTAL</b>	<b>0</b>	<b>0</b>	<b>0</b>	<b>0</b>	<b>0</b>	<b>0</b>	<b>0</b>
<b>Other Private Colleges</b>							
DeVry Institute of Technology					0	0	0
Prairie Bible College					0	0	0
Rocky Mountain College					0	0	0
<b>TOTAL</b>	<b>0</b>	<b>0</b>	<b>0</b>	<b>0</b>	<b>0</b>	<b>0</b>	<b>0</b>
<b>Other Within-Province Institutions*</b>							
<b>TOTAL WITHIN-PROVINCE</b>	<b>61</b>	<b>7</b>	<b>0</b>	<b>0</b>	<b>61</b>	<b>7</b>	<b>68</b>
<b>TOTAL INTO-PROVINCE</b>	<b>37</b>	<b>1</b>	<b>0</b>	<b>0</b>	<b>37</b>	<b>1</b>	<b>38</b>
<b>TOTAL TRANSFER STUDENTS</b>	<b>98</b>	<b>8</b>	<b>0</b>	<b>0</b>	<b>98</b>	<b>8</b>	<b>106</b>

\* "Other Within-Province Institutions" refers to Alberta post-secondary institutions who are not members of the Alberta Transfer System.

# 7. TO FIRST NATIONS INSTITUTIONS

FALL 2008

SENDING INSTITUTION	RECEIVING INSTITUTION										
	Blue Quills		Maskwachees		Red Crow		Yellowhead		Total		GRAND TOTAL
	F.T.	P.T.	F.T.	P.T.	F.T.	P.T.	F.T.	P.T.	F.T.	P.T.	
<b>Comprehensive Academic and Research Institutions</b>											
Athabasca University									0	0	0
University of Alberta									0	0	0
University of Calgary									0	0	0
The University of Lethbridge									0	0	0
<b>TOTAL</b>	0	0	0	0	0	0	0	0	0	0	0
<b>Baccalaureate and Applied Studies Institutions</b>											
Grant MacEwan College									0	0	0
Mount Royal College									0	0	0
<b>TOTAL</b>	0	0	0	0	0	0	0	0	0	0	0
<b>Polytechnical Institutions</b>											
NAIT									0	0	0
SAIT									0	0	0
<b>TOTAL</b>	0	0	0	0	0	0	0	0	0	0	0
<b>Comprehensive Community Institutions</b>											
Bow Valley College									0	0	0
Grande Prairie Regional College									0	0	0
Keyano College									0	0	0
Lakeland College									0	0	0
Lethbridge College									0	0	0
Medicine Hat College									0	0	0
NorQuest College									0	0	0
Northern Lakes College									0	0	0
Olds College									0	0	0
Portage College	1								1	0	1
Red Deer College									0	0	0
<b>TOTAL</b>	1	0	0	0	0	0	0	0	1	0	1
<b>Independent Academic Institutions</b>											
Ambrose University College									0	0	0
Canadian University College									0	0	0
Concordia University College									0	0	0
St. Mary's University College									0	0	0
Taylor University College									0	0	0
The King's University College									0	0	0
<b>TOTAL</b>	0	0	0	0	0	0	0	0	0	0	0
<b>Specialized Arts and Culture Institutions</b>											
Alberta College of Art + Design									0	0	0
The Banff Centre									0	0	0
<b>TOTAL</b>	0	0	0	0	0	0	0	0	0	0	0
<b>First Nations Institutions</b>											
Blue Quills First Nations College									0	0	0
Maskwachees Cultural College									0	0	0
Red Crow Community College									0	0	0
Yellowhead Tribal College									0	0	0
<b>TOTAL</b>	0	0	0	0	0	0	0	0	0	0	0
<b>Other Private Colleges</b>											
DeVry Institute of Technology									0	0	0
Prairie Bible College									0	0	0
Rocky Mountain College									0	0	0
<b>TOTAL</b>	0	0	0	0	0	0	0	0	0	0	0
<b>Other Within-Province Institutions*</b>											
<b>TOTAL WITHIN-PROVINCE</b>	1	0	0	0	0	0	0	0	1	0	1
<b>TOTAL INTO-PROVINCE</b>									0	0	0
<b>TOTAL TRANSFER STUDENTS</b>	1	0	0	0	0	0	0	0	1	0	1

\* "Other Within-Province Institutions" refers to Alberta post-secondary institutions who are not members of the Alberta Transfer System.

# 8. TO OTHER PRIVATE COLLEGES

FALL 2008

SENDING INSTITUTION	RECEIVING INSTITUTION								
	DeVry		Prairie Bible		Rocky Mountain		Total		GRAND TOTAL
	F.T.	P.T.	F.T.	P.T.	F.T.	P.T.	F.T.	P.T.	
<b>Comprehensive Academic and Research Institutions</b>									
Athabasca University			1				1	0	1
University of Alberta	1						1	0	1
University of Calgary	1				1		2	0	2
The University of Lethbridge							0	0	0
TOTAL	2	0	1	0	1	0	4	0	4
<b>Baccalaureate and Applied Studies Institutions</b>									
Grant MacEwan College	1						1	0	1
Mount Royal College	3				2		5	0	5
TOTAL	4	0	0	0	2	0	6	0	6
<b>Polytechnical Institutions</b>									
NAIT							0	0	0
SAIT							0	0	0
TOTAL	0	0	0	0	0	0	0	0	0
<b>Comprehensive Community Institutions</b>									
Bow Valley College							0	0	0
Grande Prairie Regional College							0	0	0
Keyano College							0	0	0
Lakeland College							0	0	0
Lethbridge College							0	0	0
Medicine Hat College							0	0	0
NorQuest College							0	0	0
Northern Lakes College							0	0	0
Olds College							0	0	0
Portage College							0	0	0
Red Deer College	2						2	0	2
TOTAL	2	0	0	0	0	0	2	0	2
<b>Independent Academic Institutions</b>									
Ambrose University College						1	0	1	1
Canadian University College							0	0	0
Concordia University College					1		1	0	1
St. Mary's University College							0	0	0
Taylor University College							0	0	0
The King's University College							0	0	0
TOTAL	0	0	0	0	1	1	1	1	2
<b>Specialized Arts and Culture Institutions</b>									
Alberta College of Art + Design							0	0	0
The Banff Centre							0	0	0
TOTAL	0	0	0	0	0	0	0	0	0
<b>First Nations Institutions</b>									
Blue Quills First Nations College							0	0	0
Maskwachees Cultural College	1						1	0	1
Red Crow Community College							0	0	0
Yellowhead Tribal College							0	0	0
TOTAL	1	0	0	0	0	0	1	0	1
<b>Other Private Colleges</b>									
DeVry Institute of Technology							0	0	0
Prairie Bible College					1		1	0	1
Rocky Mountain College							0	0	0
TOTAL	0	0	0	0	1	0	1	0	1
<b>Other Within-Province Institutions*</b>	<b>21</b>				<b>2</b>		<b>23</b>	<b>0</b>	<b>23</b>
<b>TOTAL WITHIN-PROVINCE</b>	<b>30</b>	<b>0</b>	<b>1</b>	<b>0</b>	<b>7</b>	<b>1</b>	<b>38</b>	<b>1</b>	<b>39</b>
<b>TOTAL INTO-PROVINCE</b>			<b>6</b>	<b>7</b>	<b>7</b>	<b>2</b>	<b>13</b>	<b>9</b>	<b>22</b>
<b>TOTAL TRANSFER STUDENTS</b>	<b>30</b>	<b>0</b>	<b>7</b>	<b>7</b>	<b>14</b>	<b>3</b>	<b>51</b>	<b>10</b>	<b>61</b>

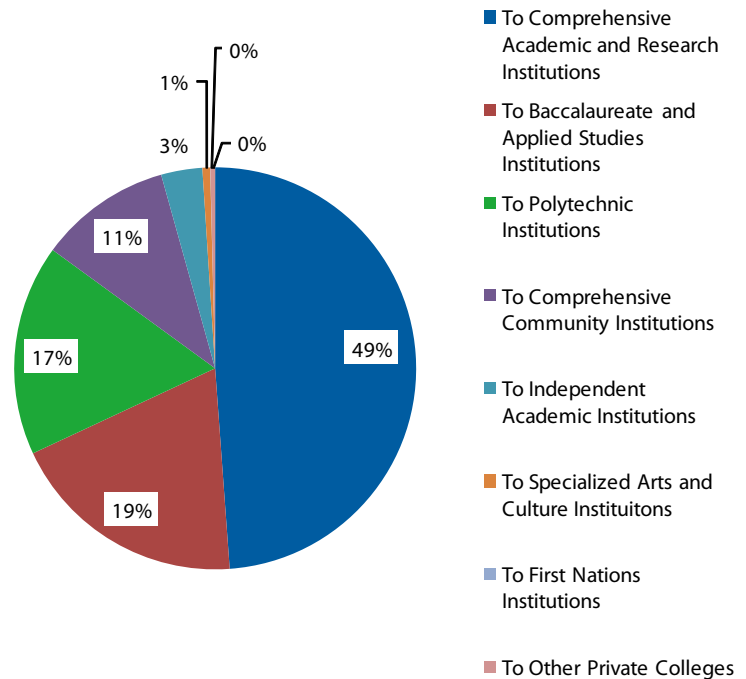
\*"Other Within-Province Institutions" refers to Alberta post-secondary institutions who are not members of the Alberta Transfer System.

# 9. TRANSFER BY SECTOR

FALL 2008

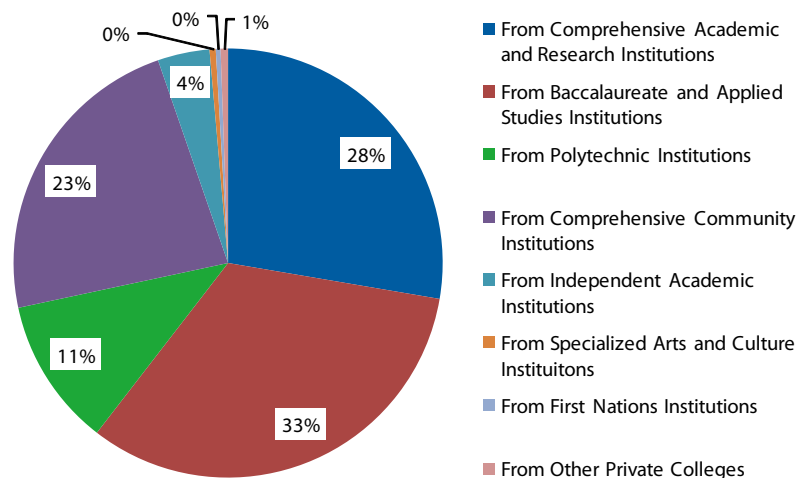
## Number of Students Transferring To Post-Secondary Sectors - Fall 2008

	Within Province			Into Province			GRAND
	F.T.	P.T.	Total	F.T.	P.T.	Total	TOTAL
To Comprehensive Academic and Research Institutions	4,793	793	5,586	1,384	1,147	2,531	8,117
To Baccalaureate and Applied Studies Institutions	1,885	292	2,177	849	255	1,104	3,281
To Polytechnical Institutions	1,664	181	1,845	639	116	755	2,600
To Comprehensive Community Institutions	1,045	356	1,401	465	120	585	1,986
To Independent Academic Institutions	325	99	424	85	29	114	538
To Specialized Arts and Culture Institutions	61	7	68	37	1	38	106
To First Nations Institutions	1	0	1	0	0	0	1
To Other Private Colleges	38	1	39	13	9	22	61
<b>Grand Total</b>	<b>9,812</b>	<b>1,729</b>	<b>11,541</b>	<b>3,472</b>	<b>1,677</b>	<b>5,149</b>	<b>16,690</b>



## Number of Students Transferring From Alberta Post-Secondary Sectors

	F.T.	P.T.	GRAND TOTAL
From Comprehensive Academic and Research Institutions	2,575	477	3,052
From Baccalaureate and Applied Studies Institutions	3,215	403	3,618
From Polytechnical Institutions	962	271	1,233
From Comprehensive Community Institutions	2,122	420	2,542
From Independent Academic Institutions	388	43	431
From Specialized Arts and Culture Institutions	41	10	51
From First Nations Institutions	37	3	40
From Other Private Colleges	49	13	62
<b>Grand Total</b>	<b>9,389</b>	<b>1,640</b>	<b>11,029</b>



# 10. TOTAL TRANSFERS 1998 - 2008

## Number of Students Transferring Within Alberta 1998-2008

	1998	1999	2000	2001	2002	2003	2004	2005	2006	2007	2008	2007 to 2008	
												#	%
<b>To Comprehensive Academic and Research Institutions</b>	4,541	4,957	5,011	4,634	4,799	4,953	4,905	5,309	5,603	4,801	5,586	785	16.4%
<b>To Baccalaureate and Applied Studies Institutions</b>						1,637	1,823	1,713	1,795	1,848	2,177	329	17.8%
<b>To Public Colleges</b>	2,649	2,794	2,459	2,982	3,248								
<b>To Polytechnic Institutions</b>	1,922	916	753	922	881	1,304	1,276	1,121	930	1,070	1,845	775	72.4%
<b>To Comprehensive Community Institutions</b>						1,235	1,302	1,195	909	1,148	1,401	253	22.0%
<b>To Other Institutions*</b>	568	619	522	285	342								
<b>To Independent Academic Institutions</b>						465	317	372	280	329	424	95	28.9%
<b>To Specialized Arts and Culture Institutions</b>						58	29	23	17	62	68	6	9.7%
<b>To First Nations Institutions</b>						19	5			0	1	1	100%
<b>To Other Private Colleges</b>						24	80	55	17	23	39	16	69.6%
<b>Grand Total</b>	<b>9,680</b>	<b>9,286</b>	<b>8,745</b>	<b>8,823</b>	<b>9,270</b>	<b>9,695</b>	<b>9,737</b>	<b>9,733</b>	<b>9,534</b>	<b>9,281</b>	<b>11,541</b>	<b>2,260</b>	<b>24.4%</b>

\* "To Other Institutions" includes Independent Academic Institutions, Specialized Arts and Culture Institutions, First Nations Institutions and Other Private Colleges for the years 1998 - 2002.

## Number of Students Transferring Within and Into Alberta 1998-2008

	1998	1999	2000	2001	2002	2003	2004	2005	2006	2007	2008	2007 to 2008	
												#	%
<b>To Comprehensive Academic and Research Institutions</b>	7,808	8,706	7,486	7,134	7,063	7,174	6,978	7,429	7,956	7,297	8,117	820	11.2%
<b>To Baccalaureate and Applied Studies Institutions</b>						1,637	2,668	2,477	2,739	3,015	3,281	266	8.8%
<b>To Public Colleges</b>	3,973	4,335	3,760	4,351	4,810								
<b>To Polytechnic Institutions</b>	2,569	1,046	938	1,140	1,222	1,647	1,876	1,533	1,513	1,611	2,600	989	61.4%
<b>To Comprehensive Community Institutions</b>						1,674	2,133	1,706	1,292	1,818	1,986	168	9.2%
<b>To Other Institutions*</b>	736	793	712	393	520								
<b>To Independent Academic Institutions</b>						662	371	484	373	409	538	129	31.5%
<b>To Specialized Arts and Culture Institutions</b>						168	52	92	0	96	106	10	10.4%
<b>To First Nations Institutions</b>						23	5	0	0	0	1	1	100%
<b>To Other Private Colleges</b>						84	146	106	44	44	61	17	38.6%
<b>Grand Total</b>	<b>15,086</b>	<b>14,880</b>	<b>12,896</b>	<b>13,018</b>	<b>13,615</b>	<b>13,069</b>	<b>14,229</b>	<b>13,827</b>	<b>13,917</b>	<b>14,290</b>	<b>16,690</b>	<b>2,400</b>	<b>16.8%</b>

\* "To Other Institutions" includes Independent Academic Institutions, Specialized Arts and Culture Institutions, First Nations Institutions and Other Private Colleges for the years 1998 - 2002.

# EXTRACTS BY SECTOR

FALL 2008

*The following pages graphically depict the data on student transfers to and from Alberta post-secondary institutions as listed below.*

## *Transfers to*

Number of students transferring from Alberta post-secondary institutions to Alberta:

1. Post-secondary institutions
2. Comprehensive Academic and Research Institutions (Universities)
3. Polytechnical Institutions (NAIT and SAIT)
4. Baccalaureate and Applied Studies Institutions (Grant MacEwan and Mount Royal)
5. Comprehensive Community Institutions (Public Colleges)
6. Independent Academic Institutions (Private Colleges with Accredited Degrees)
7. Specialized Arts and Culture Institutions (ACAD and the Banff Centre)
8. First Nations Institutions
9. Other Private Colleges

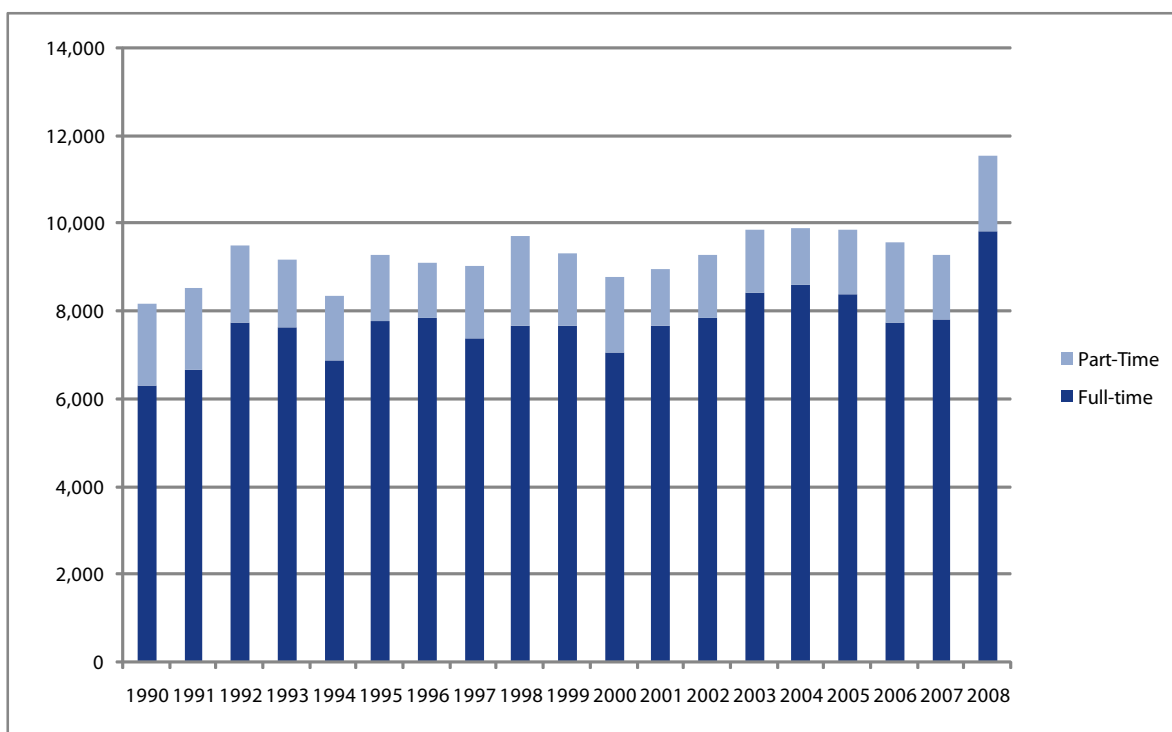
## *Transfers from*

Number of students transferring to Alberta universities from public colleges with university transfer programs from:

1. Grande Prairie Regional College
2. Grant MacEwan College
3. Keyano College
4. Lakeland College
5. Medicine Hat College
6. Mount Royal College
7. Northern Lakes College
8. Portage College
9. Red Deer College
10. All colleges with formal university transfer programs
11. Lethbridge College
12. NAIT
13. SAIT

# WITHIN PROVINCE TRANSFER

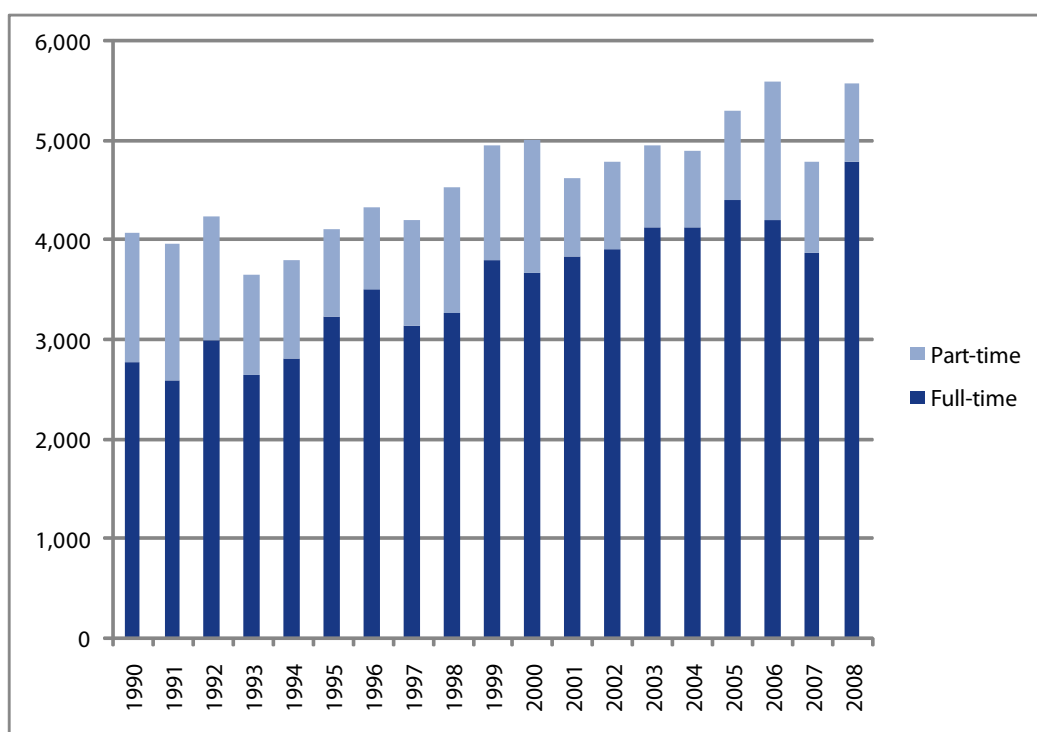
TRANSFER BETWEEN ALBERTA POST-SECONDARY INSTITUTIONS, FALL 1990 - FALL 2008



Year	Full-time	Part-Time	Total
1990	6,289	1,861	8,150
1991	6,641	1,853	8,494
1992	7,726	1,763	9,489
1993	7,610	1,560	9,170
1994	6,843	1,473	8,316
1995	7,750	1,508	9,258
1996	7,842	1,251	9,093
1997	7,353	1,645	8,998
1998	7,637	2,043	9,680
1999	7,638	1,648	9,286
2000	7,023	1,722	8,745
2001	7,636	1,288	8,924
2002	7,841	1,429	9,270
2003	8,411	1,416	9,827
2004	8,587	1,278	9,865
2005	8,359	1,468	9,827
2006	7,727	1,807	9,534
2007	7,804	1,474	9,278
2008	9,812	1,729	11,541

# TO COMPREHENSIVE ACADEMIC & RESEARCH INSTITUTIONS\*

WITHIN PROVINCE TRANSFER, FALL 1990 - FALL 2008



Year	Full-time	Part-time	Total
1990	2,782	1,293	4,075
1991	2,589	1,383	3,972
1992	2,998	1,254	4,252
1993	2,659	992	3,651
1994	2,815	994	3,809
1995	3,240	876	4,116
1996	3,510	828	4,338
1997	3,146	1,058	4,204
1998	3,275	1,266	4,541
1999	3,812	1,145	4,957
2000	3,677	1,334	5,011
2001	3,835	800	4,635
2002	3,921	878	4,799
2003	4,139	814	4,953
2004	4,127	778	4,905
2005	4,400	909	5,309
2006	4,199	1,404	5,603
2007	3,887	914	4,801
2008	4,793	793	5,586

\* In Fall 2007, Alberta Advanced Education and Technology instituted the *Roles and Mandates Policy Framework*, which introduced categories of institutions under a new six-sector model. As a result, the historical data for the Transfer Patterns report has been translated to the new categories, going back to the Fall 2003 report.

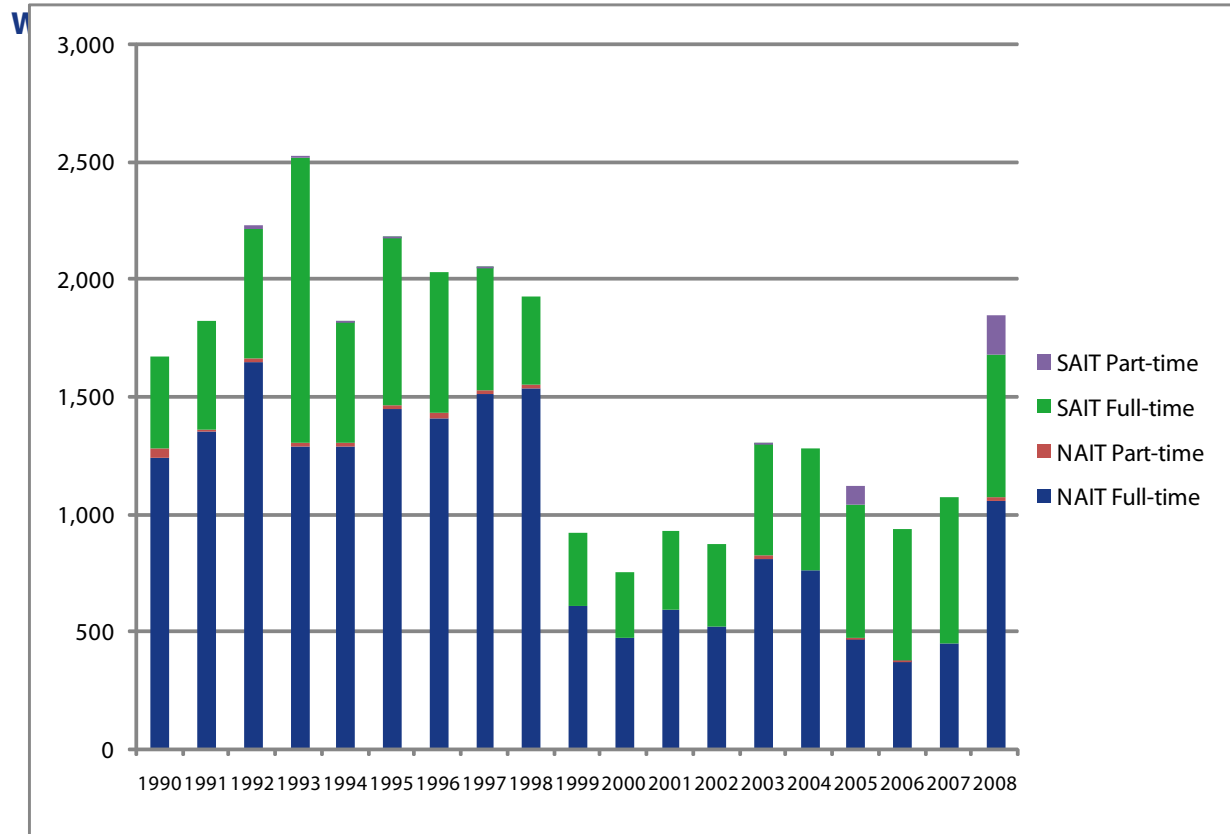
As the institutions in the former "Universities" category are the same as the institution in the "Comprehensive Academic & Research Institutions" category, historical data can be used back to the Fall 1990 report.

#### Comprehensive Academic & Research Institutions:

- Athabasca University
- University of Alberta
- University of Calgary
- University of Lethbridge



# TO POLYTECHNICAL INSTITUTIONS



Year	Full-time	Part-time	Total
1990	1,628	37	1,665
1991	1,807	11	1,818
1992	2,200	26	2,226
1993	2,500	20	2,520
1994	1,799	22	1,821
1995	2,155	23	2,178
1996	2,005	18	2,023
1997	2,035	15	2,050
1998	1,907	15	1,922
1999	916	0	916
2000	753	0	753
2001	925	0	925
2002	867	0	867
2003	1,288	16	1,304
2004	1,276	0	1,276
2005	1,037	84	1,121
2006	928	2	930
2007	1,070	0	1,070
2008	1,664	181	1,845

\* In Fall 2007, Alberta Advanced Education and Technology instituted the *Roles and Mandates Policy Framework*, which introduced categories of institutions under a new six-sector model. As a result, the historical data for the Transfer Patterns report has been translated to the new categories, going back to the Fall 2003 report.

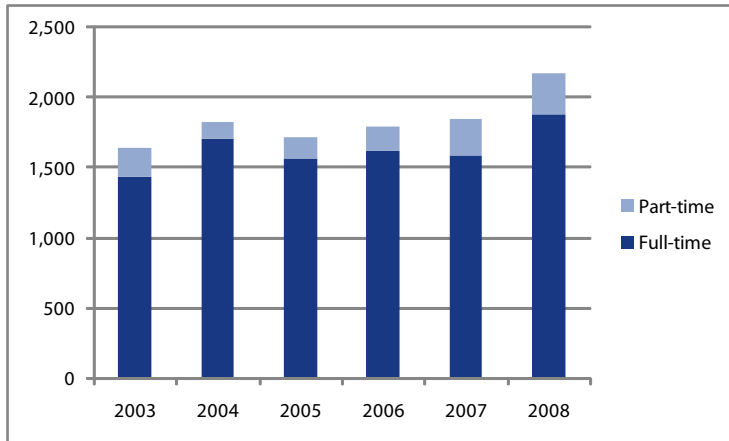
As the institutions in the former "Technical Institutes" category are the same as the institution in the "Polytechnical Institutions" category, historical data can be used back to the Fall 1990 report.

#### Polytechnical Institutions:

- NAIT
- SAIT

## TO BACCALAUREATE & APPLIED STUDIES INSTITUTIONS\*

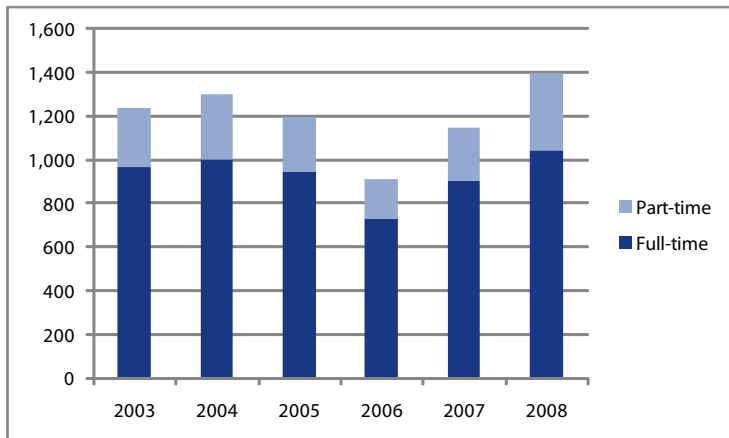
WITHIN PROVINCE TRANSFER, FALL 2003 - FALL 2008



Year	Full-time	Part-time	Total
2003	1,438	199	1,637
2004	1,708	115	1,823
2005	1,560	153	1,713
2006	1,617	178	1,795
2007	1,592	256	1,848
2008	1,885	292	2,177

## TO COMPREHENSIVE COMMUNITY INSTITUTIONS\*

WITHIN PROVINCE TRANSFER, FALL 1990 - FALL 2008



Year	Full-time	Part-time	Total
2003	966	269	1,235
2004	1,004	298	1,302
2005	943	252	1,195
2006	730	179	909
2007	904	244	1,148
2008	1,045	356	1,401

\* In Fall 2007, Alberta Advanced Education and Technology instituted the *Roles and Mandates Policy Framework*, which introduced categories of institutions under a new six-sector model. As a result, the historical data for the Transfer Patterns report has been translated to the new categories, going back to the Fall 2003 report.

### Baccalaureate and Applied Studies Institutions:

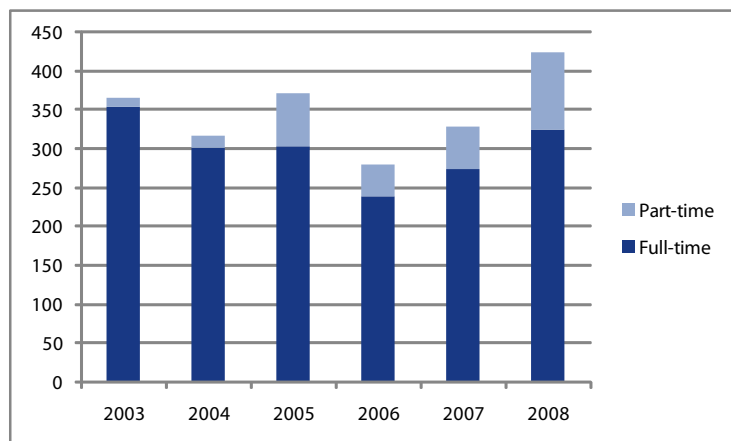
- Grant MacEwan College
- Mount Royal College

### Comprehensive Community Institutions:

- Bow Valley College
- Grande Prairie Regional College
- Keyano College
- Lakeland College
- Lethbridge College
- Medicine Hat College
- NorQuest College
- Northern Lakes College
- Olds College
- Portage College
- Red Deer College

## TO INDEPENDENT ACADEMIC INSTITUTIONS\*

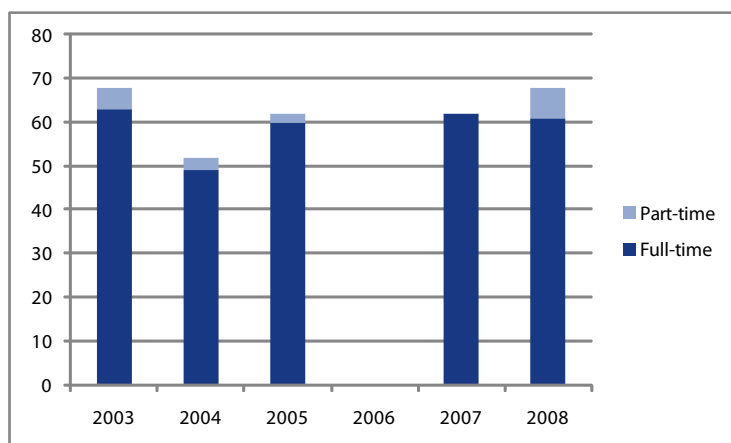
WITHIN PROVINCE TRANSFER, FALL 1990 - FALL 2008



Year	Full-time	Part-time	Total
2003	354	11	365
2004	302	15	317
2005	304	68	372
2006	239	41	280
2007	274	55	329
2008	325	99	424

## TO SPECIALIZED ARTS & CULTURE INSTITUTIONS\*

WITHIN PROVINCE TRANSFER, FALL 1990 - FALL 2008



Year	Full-time	Part-time	Total
2003	63	5	68
2004	49	3	52
2005	60	2	62
2006*			0
2007	62		62
2008	61	7	68

\* No reports for 2006.

\* In Fall 2007, Alberta Advanced Education and Technology instituted the *Roles and Mandates Policy Framework*, which introduced categories of institutions under a new six-sector model. As a result, the historical data for the Transfer Patterns report has been translated to the new categories, going back to the Fall 2003 report.

### Independent Academic Institutions:

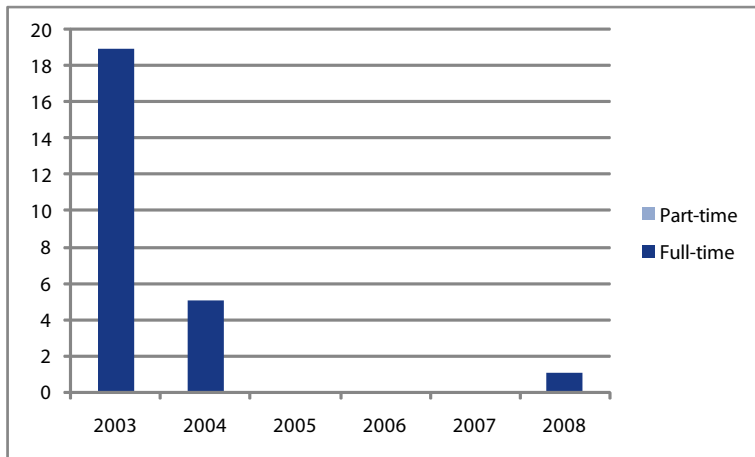
- Ambrose University College
- Canadian University College
- Concordia University College of Alberta
- St. Mary's University College
- Taylor University College
- The King's University College

### Specialized Arts and Culture Institutions:

- Alberta College of Art + Design
- The Banff Centre

## TO FIRST NATIONS INSTITUTIONS\*

WITHIN PROVINCE TRANSFER, FALL 1990 - FALL 2008

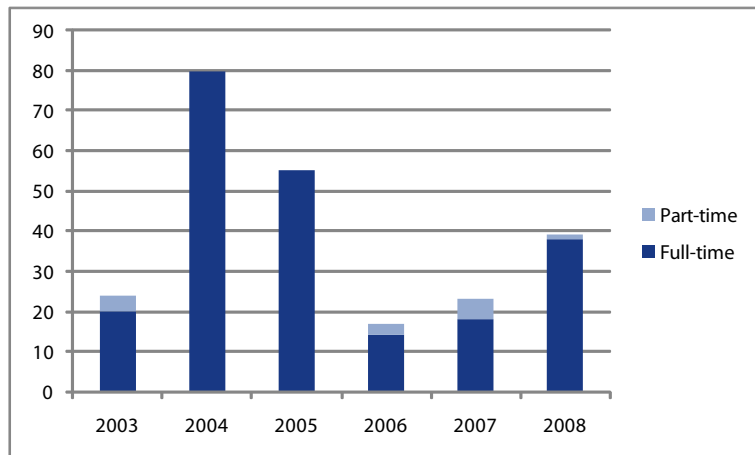


Year	Full-time	Part-time	Total
2003	19	0	19
2004	5	0	5
2005*	0	0	0
2006*	0	0	0
2007*	0	0	0
2008*	1	0	1

\* Limited reports for 2005 - 2008.

## TO OTHER PRIVATE COLLEGES\*

WITHIN PROVINCE TRANSFER, FALL 1990 - FALL 2008



Year	Full-time	Part-time	Total
2003	20	4	24
2004	80	0	80
2005	55	0	55
2006	14	3	17
2007	18	5	23
2008	38	1	39

\* In Fall 2007, Alberta Advanced Education and Technology instituted the *Roles and Mandates Policy Framework*, which introduced categories of institutions under a new six-sector model. As a result, the historical data for the Transfer Patterns report has been translated to the new categories, going back to the Fall 2003 report. In addition, the Alberta Transfer System includes membership from Alberta First Nations Institutions and Other Private Colleges.

**Institutions in the First Nations Institutions category are:**

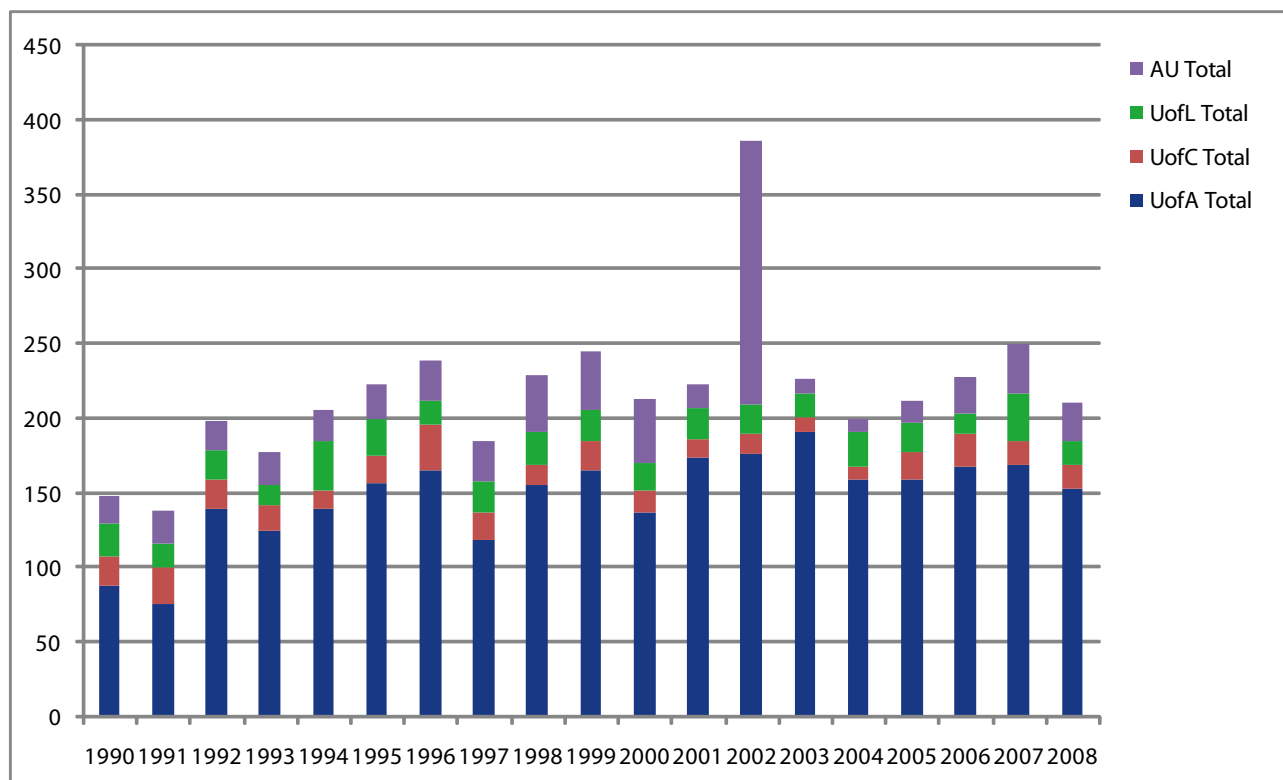
- Blue Quills First Nations College
- Maskwachees Cultural College
- Red Crow Community College
- Yellowhead Tribal College

**Institutions in the Other Private Colleges category are:**

- DeVry Institute of Technology
- Prairie Bible College
- Rocky Mountain College

# UT: GRANDE PRAIRIE REGIONAL COLLEGE

## TRANSFERS TO ALBERTA UNIVERSITIES FROM GPRC, FALL 1990 - FALL 2008

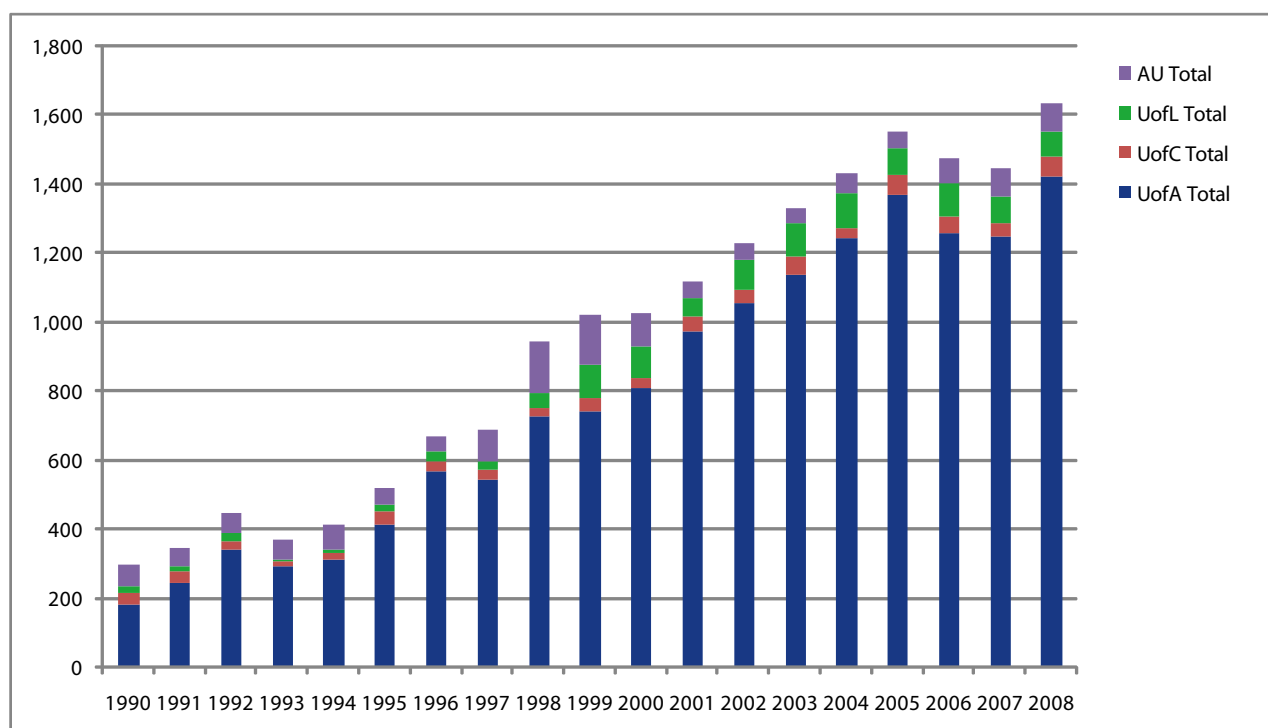


Year	UofA			UofC			UofL			AU*			Subtotals		Grand Total
	Full-time	Part-time	Total	Full-time	Part-time	Total	Full-time	Part-time	Total	Full-time	Part-time	Total	Full-time	Part-time	
1990	85	2	87	19	1	20	22	0	22		19	19	126	22	148
1991	72	3	75	23	2	25	16	0	16	0	22	22	111	27	138
1992	123	16	139	19	0	19	20	0	20	0	20	20	162	36	198
1993	116	8	124	18	0	18	13	0	13	2	20	22	149	28	177
1994	137	2	139	11	1	12	32	1	33	1	20	21	181	24	205
1995	150	6	156	19	0	19	24	0	24	1	22	23	194	28	222
1996	157	8	165	30	0	30	17	0	17	4	23	27	208	31	239
1997	112	6	118	18	1	19	19	1	20	0	27	27	149	35	184
1998	147	8	155	13	1	14	21	0	21	0	39	39	181	48	229
1999	165	0	165	19	0	19	21	0	21	0	40	40	205	40	245
2000	131	5	136	15	0	15	19	0	19	0	43	43	165	48	213
2001	167	6	173	12	1	13	21	0	21	0	15	15	200	22	222
2002	170	6	176	13	0	13	19	1	20	7	170	177	209	177	386
2003	184	6	190	11	0	11	16	0	16	0	9	9	211	15	226
2004	154	4	158	9	0	9	23	0	23	0	9	9	186	13	199
2005	157	2	159	17	1	18	19	1	20	0	15	15	193	19	212
2006	166	1	167	20	2	22	14	0	14	0	24	24	200	27	227
2007	165	4	169	15	0	15	30	2	32	0	34	34	210	40	250
2008	150	3	153	16	0	16	14	1	15	0	26	26	180	30	210

\* Except for 1993 - 1996, AU's entry is displayed as "part-time" though it may include some "full-time" students.

# UT: GRANT MACEWAN COLLEGE

## TRANSFERS TO ALBERTA UNIVERSITIES FROM GMC, FALL 1990 - FALL 2008

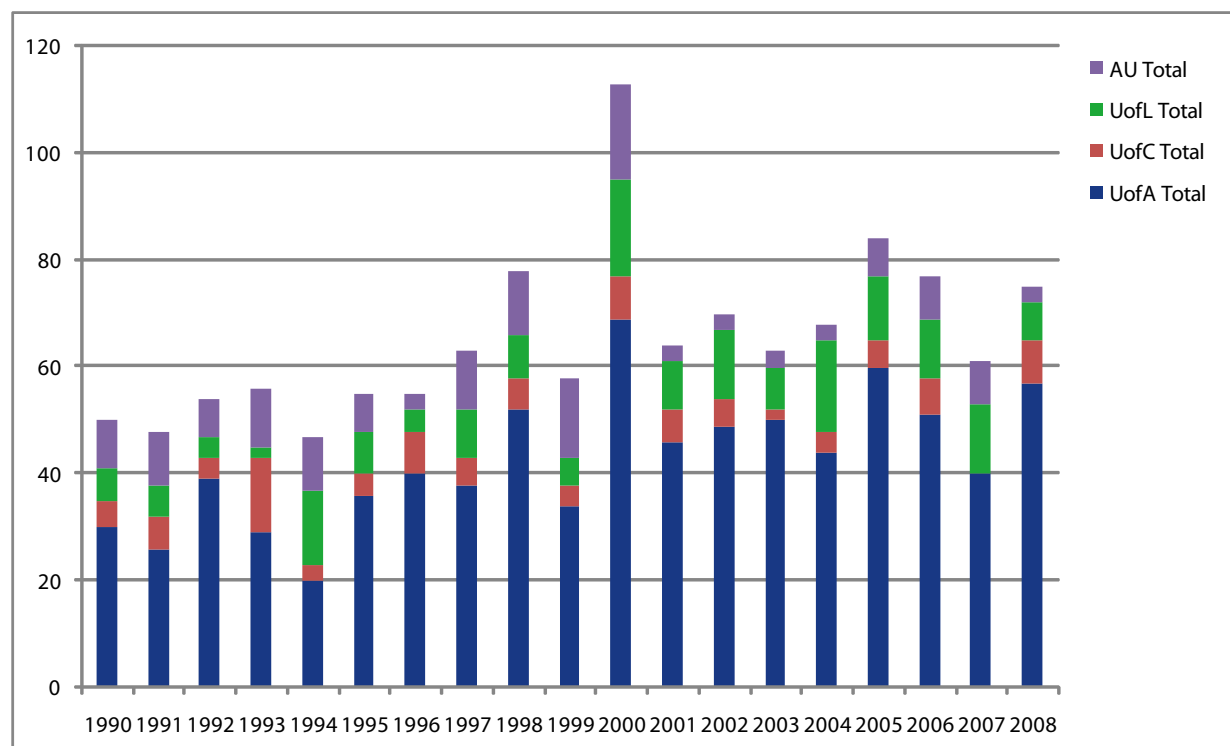


Year	UofA			UofC			UofL			AU*			Subtotals		Grand Total
	Full-time	Part-time	Total	Full-time	Part-time	Total	Full-time	Part-time	Total	Full-time	Part-time	Total	Full-time	Part-time	
1990	133	48	181	24	7	31	19	1	20		62	62	176	118	294
1991	175	68	243	32	3	35	14		14		51	51	221	122	343
1992	254	83	337	22	4	26	24		24		57	57	300	144	444
1993	225	66	291	14	1	15	5		5	10	48	58	254	115	369
1994	252	57	309	17	1	18	13		13	15	55	70	297	113	410
1995	341	69	410	39	3	42	15		15	5	47	52	400	119	519
1996	489	79	568	25	2	27	22	6	28	5	39	44	541	126	667
1997	477	65	542	26	4	30	23	2	25		89	89	526	160	686
1998	634	92	726	22	3	25	41	3	44		149	149	697	247	944
1999	740		740	33	4	37	88	11	99		144	144	861	159	1,020
2000	728	82	810	23	3	26	74	17	91		97	97	825	199	1,024
2001	893	81	974	40	2	42	47	8	55		49	49	980	140	1,120
2002	957	96	1,053	36	5	41	77	8	85		49	49	1,070	158	1,228
2003	1,042	97	1,139	48	1	49	94	6	100		42	42	1,184	146	1,330
2004	1,151	92	1,243	28	3	31	92	8	100		58	58	1,271	161	1,432
2005	1,271	97	1,368	52	8	60	62	17	79		48	48	1,385	170	1,555
2006	1,164	94	1,258	43	7	50	81	12	93		73	73	1,288	186	1,474
2007	1,175	72	1,247	35	6	41	66	9	75	0	82	82	1,276	169	1,445
2008	1,391	31	1,422	55	4	59	59	11	70	0	84	84	1,505	130	1,635

\* Except for 1993 - 1996, AU's entry is displayed as "part-time" though it may include some "full-time" students.

# UT: KEYANO COLLEGE

## TRANSFERS TO ALBERTA UNIVERSITIES FROM KEYANO, FALL 1990 - FALL 2008

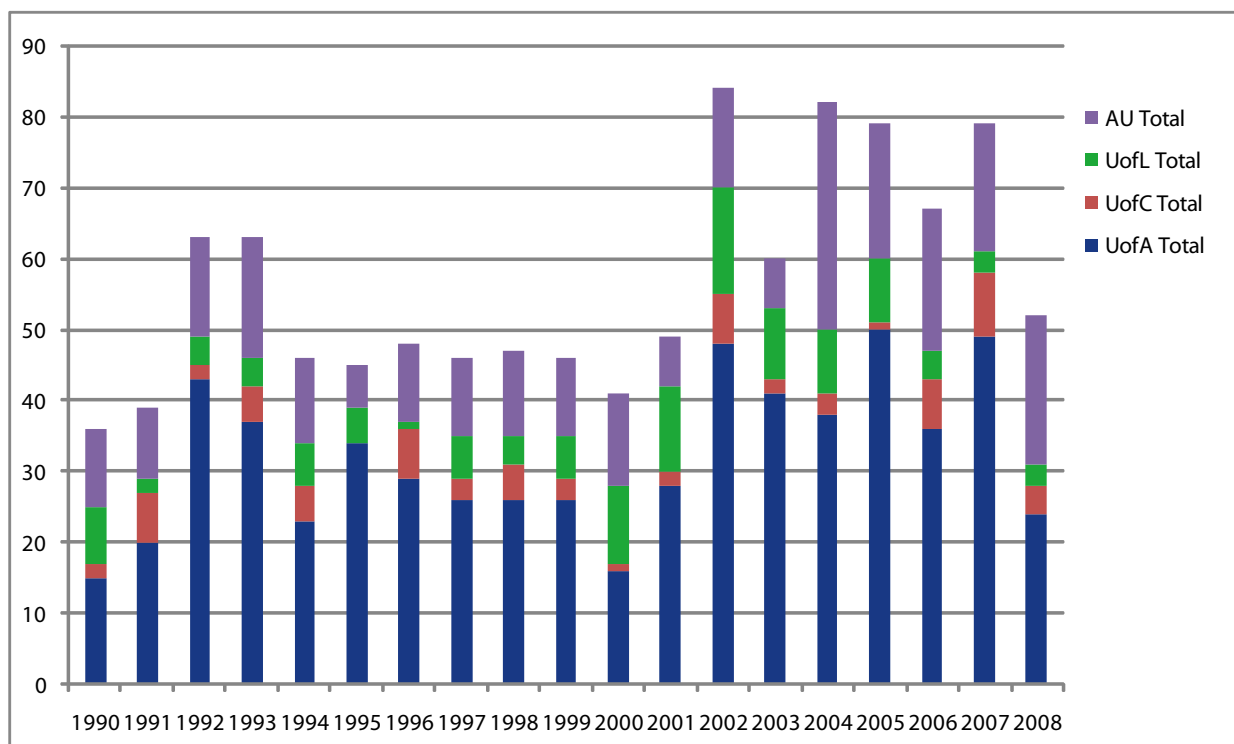


Year	UofA			UofC			UofL			AU*			Subtotals		Grand Total
	Full-time	Part-time	Total	Full-time	Part-time	Total	Full-time	Part-time	Total	Full-time	Part-time	Total	Full-time	Part-time	
1990	30		30	5		5	6		6		9	9	41	9	50
1991	25	1	26	5	1	6	6		6		10	10	36	12	48
1992	35	4	39	4		4	4		4		7	7	43	11	54
1993	26	3	29	14		14	2		2	2	9	11	44	12	56
1994	19	1	20	3		3	13	1	14		10	10	35	12	47
1995	36		36	4		4	8		8		7	7	48	7	55
1996	36	4	40	8		8	3	1	4	1	2	3	48	7	55
1997	38		38	5		5	9		9		11	11	52	11	63
1998	49	3	52	6		6	8		8		12	12	63	15	78
1999	34		34	4		4	5		5		15	15	43	15	58
2000	66	3	69	8		8	17	1	18		18	18	91	22	113
2001	43	3	46	6		6	9		9		3	3	58	6	64
2002	48	1	49	5		5	13		13		3	3	66	4	70
2003	49	1	50	2		2	8		8		3	3	59	4	63
2004	42	2	44	4		4	17		17		3	3	63	5	68
2005	59	1	60	5		5	12		12		7	7	76	8	84
2006	51		51	7		7	11		11		8	8	69	8	77
2007	39	1	40	0	0	0	13	0	13	0	8	8	52	9	61
2008	56	1	57	8	0	8	6	1	7	0	3	3	70	5	75

\* Except for 1993 - 1996, AU's entry is displayed as "part-time" though it may include some "full-time" students.

# UT: LAKELAND COLLEGE

## TRANSFERS TO ALBERTA UNIVERSITIES FROM LAKELAND, FALL 1990 - FALL 2008



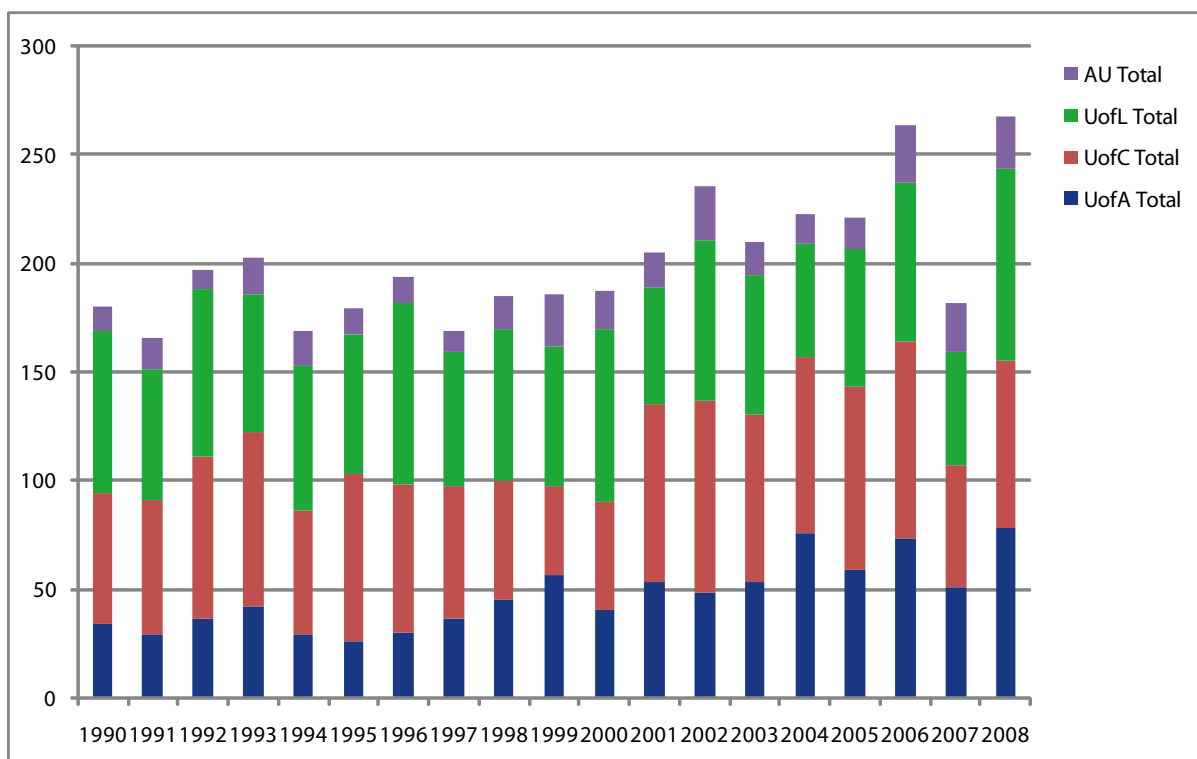
Year	UofA			UofC			UofL			AU*			Subtotals		Grand Total
	Full-time	Part-time	Total	Full-time	Part-time	Total	Full-time	Part-time	Total	Full-time	Part-time	Total	Full-time	Part-time	
1990	12	3	15	2		2	7	1	8		11	11	21	15	36
1991	19	1	20	5	2	7	2		2		10	10	26	13	39
1992	38	5	43	2		2	4		4		14	14	44	19	63
1993	34	3	37	5		5	4		4	1	16	17	44	19	63
1994	23		23	5		5	6		6		12	12	34	12	46
1995	32	2	34			0	5		5		6	6	37	8	45
1996	28	1	29	7		7	1		1	2	9	11	38	10	48
1997	25	1	26	3		3	6		6		11	11	34	12	46
1998	26		26	5		5	4		4		12	12	35	12	47
1999	26		26	3		3	6		6		11	11	35	11	46
2000	13	3	16	1		1	11		11		13	13	25	16	41
2001	26	2	28	1	1	2	12		12		7	7	39	10	49
2002	47	1	48	6	1	7	15		15		14	14	68	16	84
2003	39	2	41	2		2	10		10		7	7	51	9	60
2004	34	4	38	2	1	3	9		9		32	32	45	37	82
2005	49	1	50	1		1	9		9		19	19	59	20	79
2006	31	5	36	6	1	7	4		4		20	20	41	26	67
2007	47	2	49	8	1	9	3	0	3	0	18	18	58	21	79
2008	24	0	24	4	0	4	3	0	3	0	21	21	31	21	52

\* Except for 1993 - 1996, AU's entry is displayed as "part-time" though it may include some "full-time" students.



# UT: MEDICINE HAT COLLEGE

## TRANSFERS TO ALBERTA UNIVERSITIES FROM MEDICINE HAT COLLEGE, FALL 1990 - FALL 2008

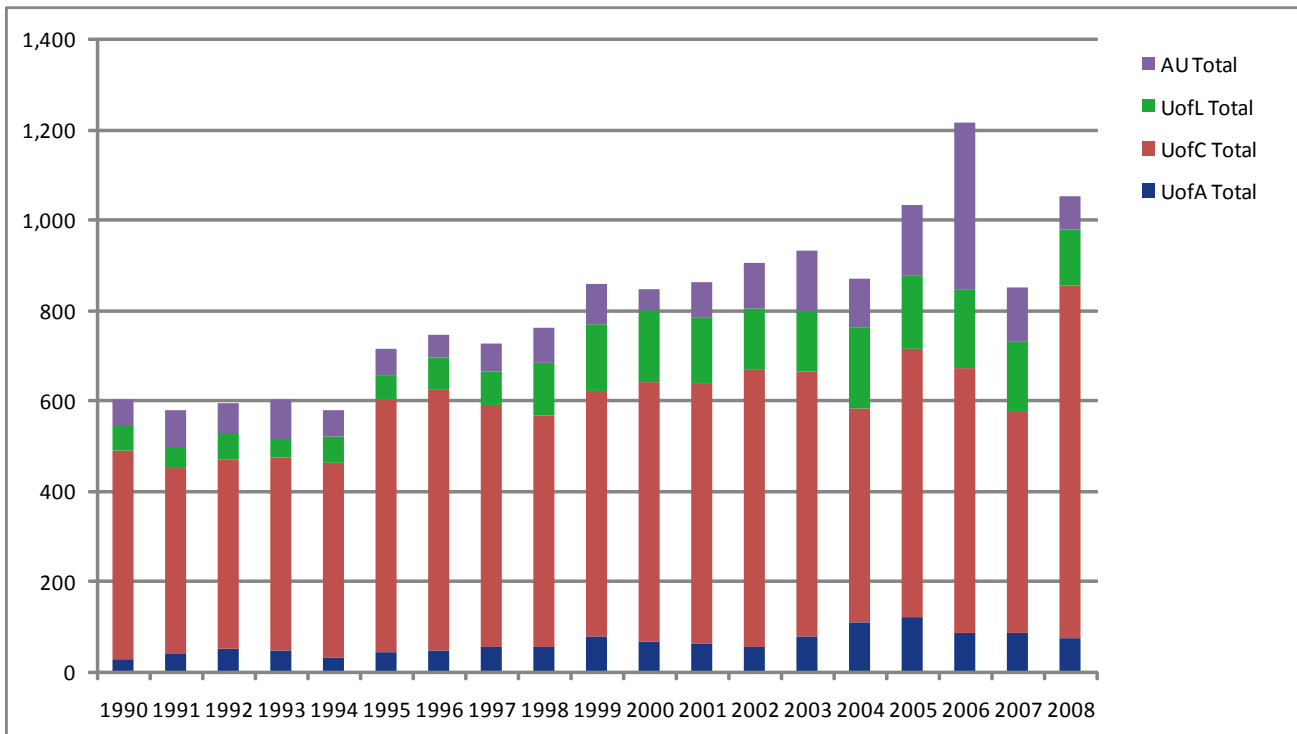


Year	UofA			UofC			UofL			AU*			Subtotals		Grand Total
	Full-time	Part-time	Total	Full-time	Part-time	Total	Full-time	Part-time	Total	Full-time	Part-time	Total	Full-time	Part-time	
1990	34		34	57	3	60	74	1	75		11	11	165	15	180
1991	26	3	29	58	4	62	56	4	60		15	15	140	26	166
1992	36		36	69	6	75	77		77		9	9	182	15	197
1993	42		42	76	4	80	62	2	64	2	15	17	182	21	203
1994	28	1	29	56	1	57	60	7	67	1	15	16	145	24	169
1995	25	1	26	73	4	77	64		64	1	11	12	163	16	179
1996	29	1	30	67	1	68	80	4	84	1	11	12	177	17	194
1997	35	1	36	59	2	61	62		62		10	10	156	13	169
1998	44	1	45	55		55	70		70		15	15	169	16	185
1999	56		56	40	1	41	61	4	65		24	24	157	29	186
2000	39	1	40	45	5	50	78	2	80		17	17	162	25	187
2001	49	4	53	80	2	82	54		54		16	16	183	22	205
2002	44	4	48	85	4	89	72	2	74		25	25	201	35	236
2003	47	6	53	76	1	77	63	2	65		15	15	186	24	210
2004	73	3	76	80	1	81	50	2	52		14	14	203	20	223
2005	58	1	59	82	2	84	63	1	64		14	14	203	18	221
2006	72	1	73	90	1	91	73	0	73		27	27	235	29	264
2007	51	0	51	56	0	56	52	0	52	0	23	23	159	23	182
2008	78	0	78	76	1	77	87	2	89	0	24	24	241	27	268

\* Except for 1993 - 1996, AU's entry is displayed as "part-time" though it may include some "full-time" students.

# UT: MOUNT ROYAL COLLEGE

## TRANSFERS TO ALBERTA UNIVERSITIES FROM MOUNT ROYAL COLLEGE, FALL 1990 - FALL 2008

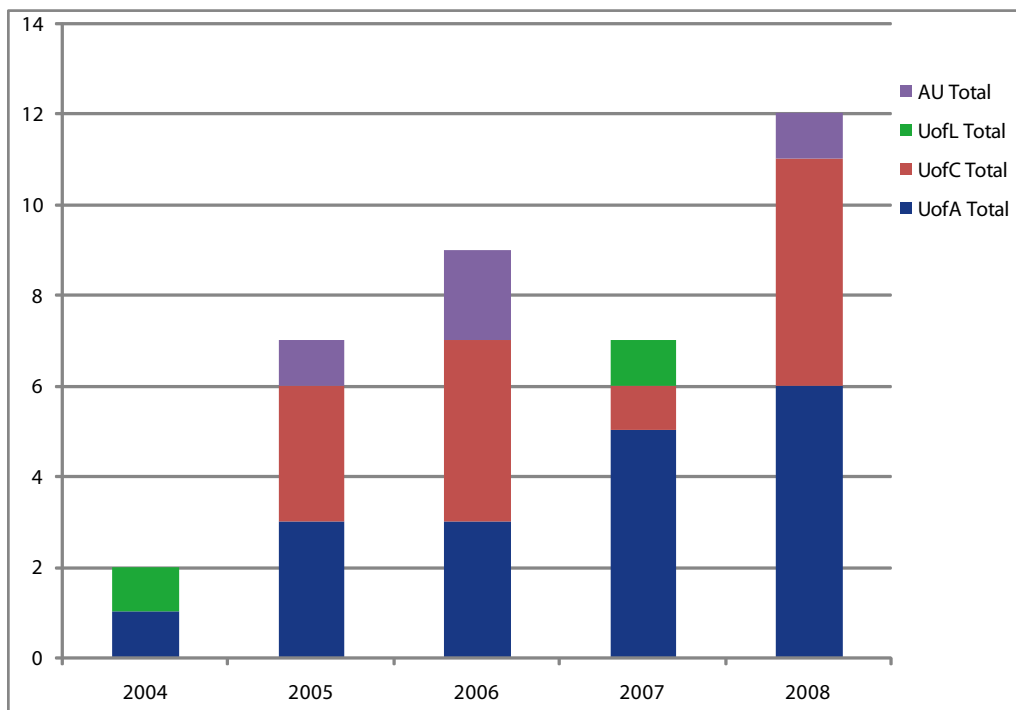


Year	UofA			UofC			UofL			AU*			Subtotals		Grand Total
	Full-time	Part-time	Total	Full-time	Part-time	Total	Full-time	Part-time	Total	Full-time	Part-time	Total	Full-time	Part-time	
1990	25	4	29	385	76	461	53	2	55		58	58	463	140	603
1991	36	1	37	338	77	415	44	2	46		80	80	418	160	578
1992	42	8	50	383	38	421	56	2	58		66	66	481	114	595
1993	44	4	48	404	22	426	41		41	11	78	89	500	104	604
1994	29	2	31	404	29	433	54	2	56	7	54	61	494	87	581
1995	38	5	43	514	47	561	51	2	53	9	51	60	612	105	717
1996	43	2	45	540	43	583	60	8	68	4	45	49	647	98	745
1997	52	4	56	507	27	534	66	8	74		65	65	625	104	729
1998	49	5	54	481	31	512	108	9	117		80	80	638	125	763
1999	79		79	516	29	545	134	12	146		88	88	729	129	858
2000	60	6	66	541	36	577	147	12	159		45	45	748	99	847
2001	62	1	63	538	35	573	126	23	149		79	79	726	138	864
2002	52	3	55	575	37	612	130	9	139		102	102	757	151	908
2003	74	3	77	549	38	587	124	10	134		135	135	747	186	933
2004	96	11	107	457	20	477	168	12	180		108	108	721	151	872
2005	110	9	119	567	29	596	153	9	162		158	158	830	205	1,035
2006	82	3	85	562	27	589	166	9	175		368	368	810	407	1,217
2007	84	3	87	460	29	489	146	9	155	0	121	121	690	162	852
2008	74	0	74	732	50	782	122	3	125	0	72	72	928	125	1,053

\* Except for 1993 - 1996, AU's entry is displayed as "part-time" though it may include some "full-time" students.

# UT: NORTHERN LAKES

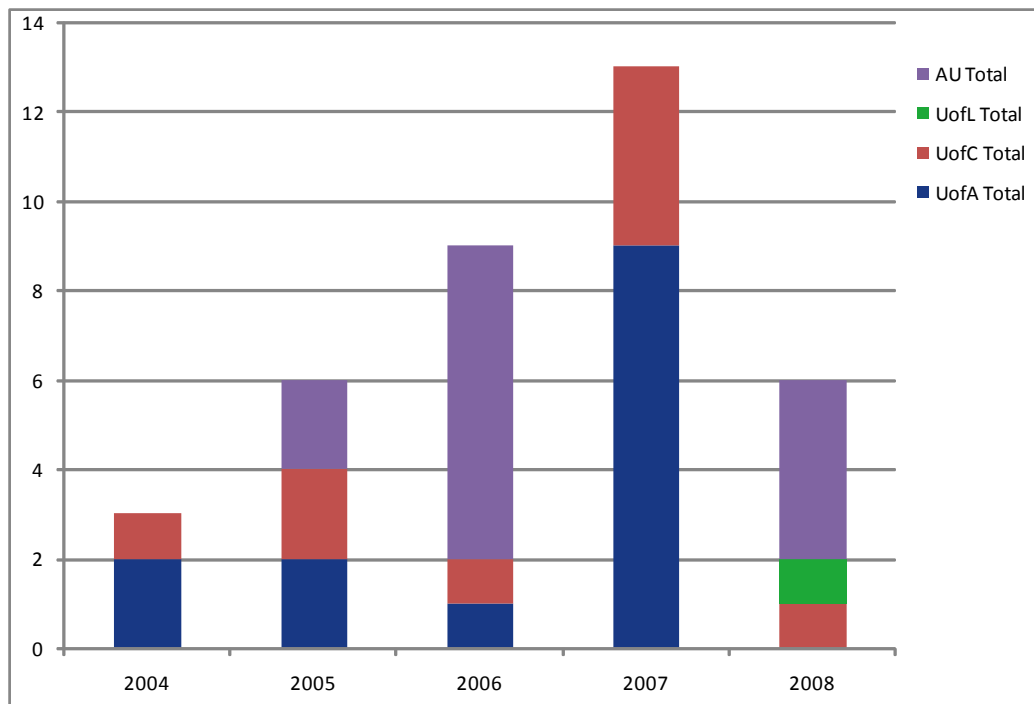
## TRANSFERS TO ALBERTA UNIVERSITIES FROM NORTHERN LAKES, FALL 2004 - FALL 2008



Year	UofA			UofC			UofL			AU*			Subtotals		Grand Total
	Full-time	Part-time	Total	Full-time	Part-time	Total	Full-time	Part-time	Total	Full-time	Part-time	Total	Full-time	Part-time	
2004	1		1			0	1		1			0	2	0	2
2005	3		3	3		3			0		1	1	6	1	7
2006	3		3	4		4			0		2	2	7	2	9
2007	5	0	5	1	0	1	1	0	1	0	0	0	7	0	7
2008	6	0	6	5	0	5	0	0	0	0	1	1	11	1	12

# UT: PORTAGE COLLEGE

## STUDENTS TRANSFERRING TO ALBERTA UNIVERSITIES FROM PORTAGE COLLEGE, FALL 2004 - FALL 2008

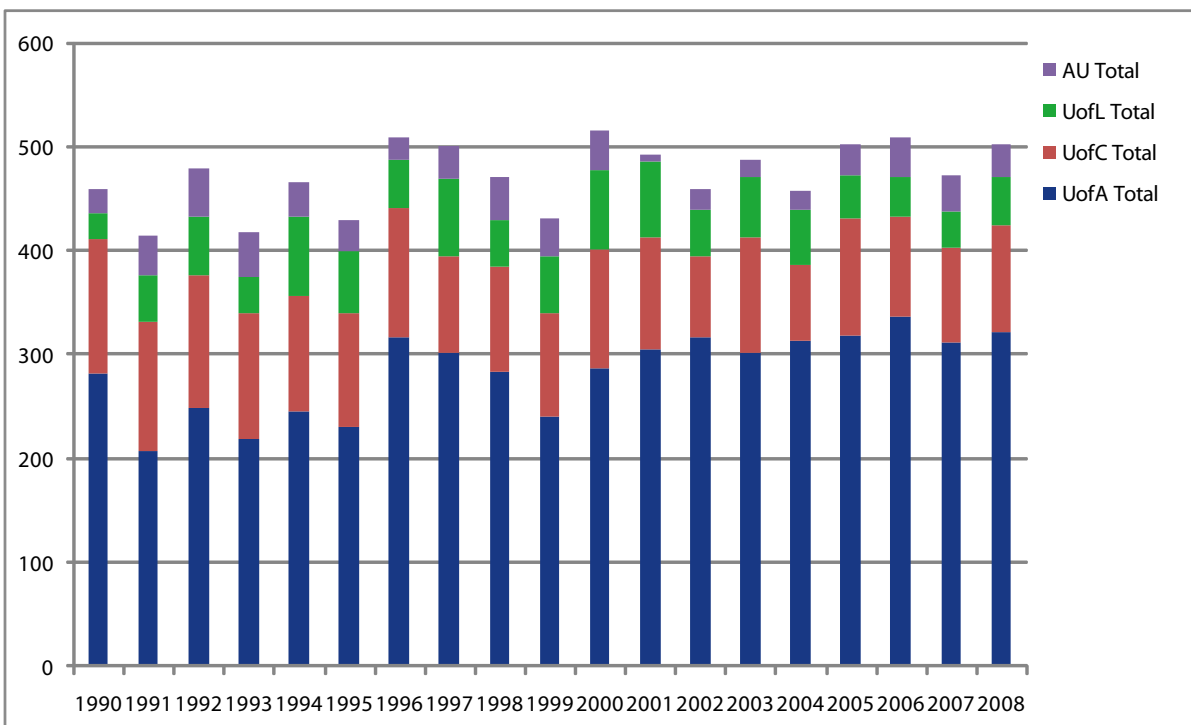


Year	UofA			UofC			UofL			AU*			Subtotals		Grand Total
	Full-time	Part-time	Total	Full-time	Part-time	Total	Full-time	Part-time	Total	Full-time	Part-time	Total	Full-time	Part-time	
2004	1	1	2	1		1			0			0	2	1	3
2005	1	1	2	2		2			0		2	2	3	3	6
2006	1		1	1		1			0		6	6	2	6	8
2007	9	0	9	4	0	4	0	0	0	0	0	0	13	0	13
2008	0	0	0	1	0	1	0	1	1	0	4	4	1	5	6

\* Except for 1993 - 1996, AU's entry is displayed as "part-time" though it may include some "full-time" students.

# UT: RED DEER COLLEGE

## TRANSFERS TO ALBERTA UNIVERSITIES FROM RED DEER COLLEGE, FALL 1990 - FALL 2008

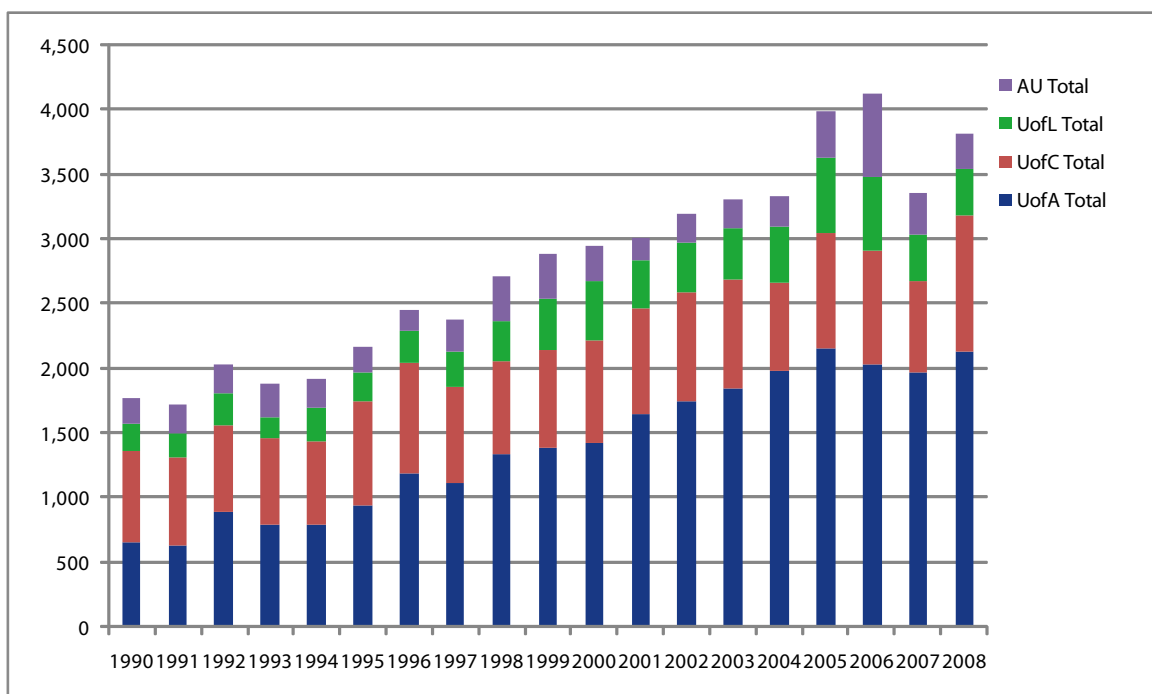


Year	UofA			UofC			UofL			AU*			Subtotals		Grand Total
	Full-time	Part-time	Total	Full-time	Part-time	Total	Full-time	Part-time	Total	Full-time	Part-time	Total	Full-time	Part-time	
1990	264	17	281	118	12	130	25		25		23	23	407	52	459
1991	189	19	208	115	8	123	45		45		39	39	349	66	415
1992	232	16	248	124	5	129	54	1	55		47	47	410	69	479
1993	202	17	219	118	2	120	35		35	9	34	43	364	53	417
1994	232	14	246	107	3	110	76	1	77	5	28	33	420	46	466
1995	212	19	231	107	2	109	59	1	60	5	24	29	383	46	429
1996	309	7	316	122	3	125	46	1	47	5	16	21	482	27	509
1997	297	5	302	90	3	93	72	2	74		31	31	459	41	500
1998	276	7	283	98	3	101	45	1	46		40	40	419	51	470
1999	240		240	93	7	100	53	2	55		36	36	386	45	431
2000	281	6	287	113	1	114	73	3	76		38	38	467	48	515
2001	299	6	305	101	7	108	69	3	72		7	7	469	23	492
2002	304	12	316	75	3	78	43	2	45		20	20	422	37	459
2003	289	12	301	109	3	112	56	1	57		18	18	454	34	488
2004	308	6	314	70	3	73	51	1	52		19	19	429	29	458
2005	312	7	319	108	4	112	42		42		30	30	462	41	503
2006	330	7	337	93	3	96	36	1	37		39	39	459	50	509
2007	304	8	312	85	6	91	35	0	35	0	35	35	424	49	473
2008	321	1	322	100	3	103	45	1	46	0	31	31	466	36	502

\* Except for 1993 - 1996, AU's entry is displayed as "part-time" though it may include some "full-time" students.

# UT PROGRAMS: OVERALL FALL 2008

## TRANSFERS TO ALBERTA UNIVERSITIES FROM FORMAL UNIVERSITY TRANSFER PROGRAMS\*



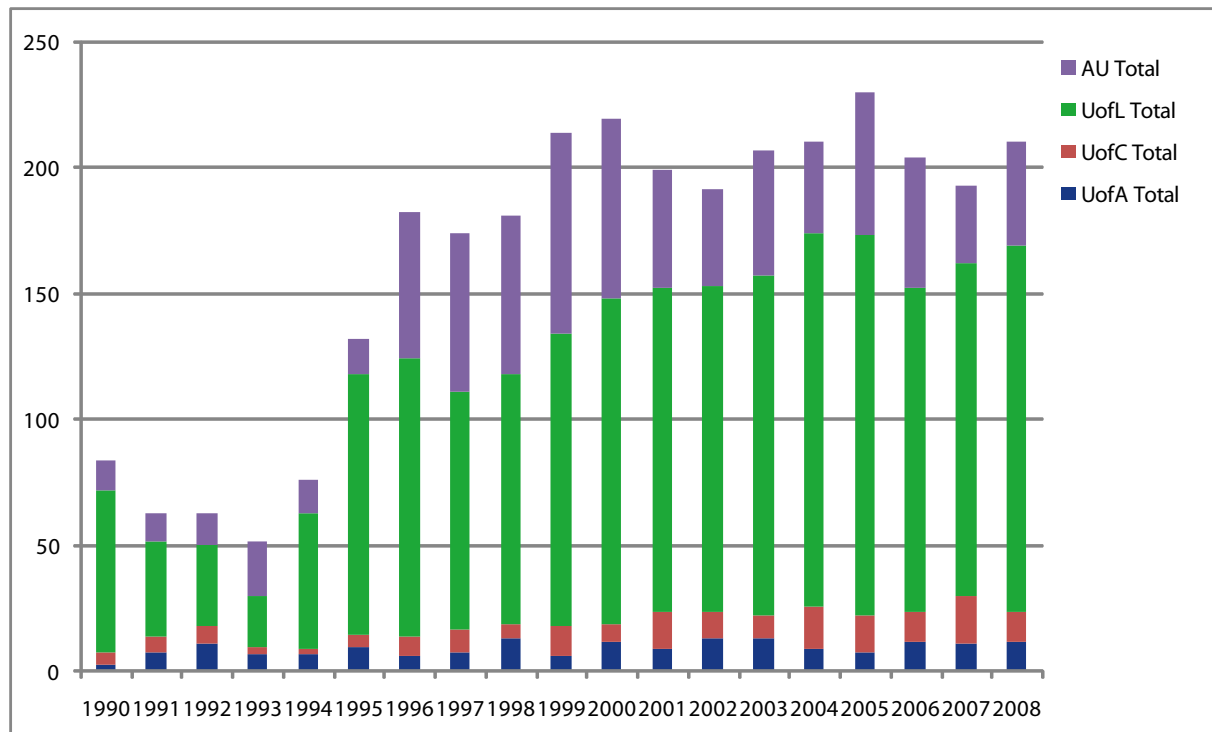
Year	UofA			UofC			UofL			AU*			Subtotals		Grand Total
	Full-time	Part-time	Total	Full-time	Part-time	Total	Full-time	Part-time	Total	Full-time	Part-time	Total	Full-time	Part-time	
1990	583	74	657	610	99	709	206	5	211		193	193	1,399	371	1,770
1991	542	96	638	576	97	673	183	6	189		227	227	1,301	426	1,727
1992	760	132	892	623	53	676	239	3	242		220	220	1,622	408	2,030
1993	689	101	790	647	29	676	162	2	164	37	220	257	1,535	352	1,887
1994	720	77	797	603	35	638	254	12	266	29	194	223	1,606	318	1,924
1995	834	102	936	756	56	812	226	3	229	21	168	189	1,837	329	2,166
1996	1,091	102	1,193	799	49	848	229	20	249	22	145	167	2,141	316	2,457
1997	1,036	82	1,118	708	37	745	257	13	270		244	244	2,001	376	2,377
1998	1,225	116	1,341	680	38	718	297	13	310		347	347	2,202	514	2,716
1999	1,390		1,390	708	41	749	368	29	397		358	358	2,466	428	2,894
2000	1,318	106	1,424	756	45	801	419	35	454		271	271	2,493	457	2,950
2001	1,540	103	1,643	778	48	826	338	34	372		176	176	2,656	361	3,017
2002	1,622	123	1,745	795	50	845	369	22	391		220	220	2,786	415	3,201
2003	1,724	127	1,851	797	43	840	371	19	390		229	229	2,892	418	3,310
2004	1,860	123	1,983	651	28	679	411	23	434		243	243	2,922	417	3,339
2005	2,031	120	2,151	857	47	904	540	37	577		362	362	3,428	566	3,994
2006	1,919	116	2,035	841	43	884	531	28	559		645	645	3,291	832	4,123
2007	1,879	90	1,969	664	42	706	346	20	366	0	321	321	2,889	473	3,362
2008	2,100	36	2,136	997	58	1,055	336	20	356	0	266	266	3,433	380	3,813

\* In the past, university transfer programs were offered at GPRC, GMC, KC, Lakeland, MHC, MRC, and RDC. In 2004, Portage and Northern Lakes were added, given their new mandates.

\*\* Except for 1993 - 1996, AU's entry is displayed as "part-time" though it may include some "full-time" students.

# UT: LETHBRIDGE COLLEGE

## TRANSFERS TO ALBERTA UNIVERSITIES FROM LETHBRIDGE COLLEGE, FALL 1990 - FALL 2008

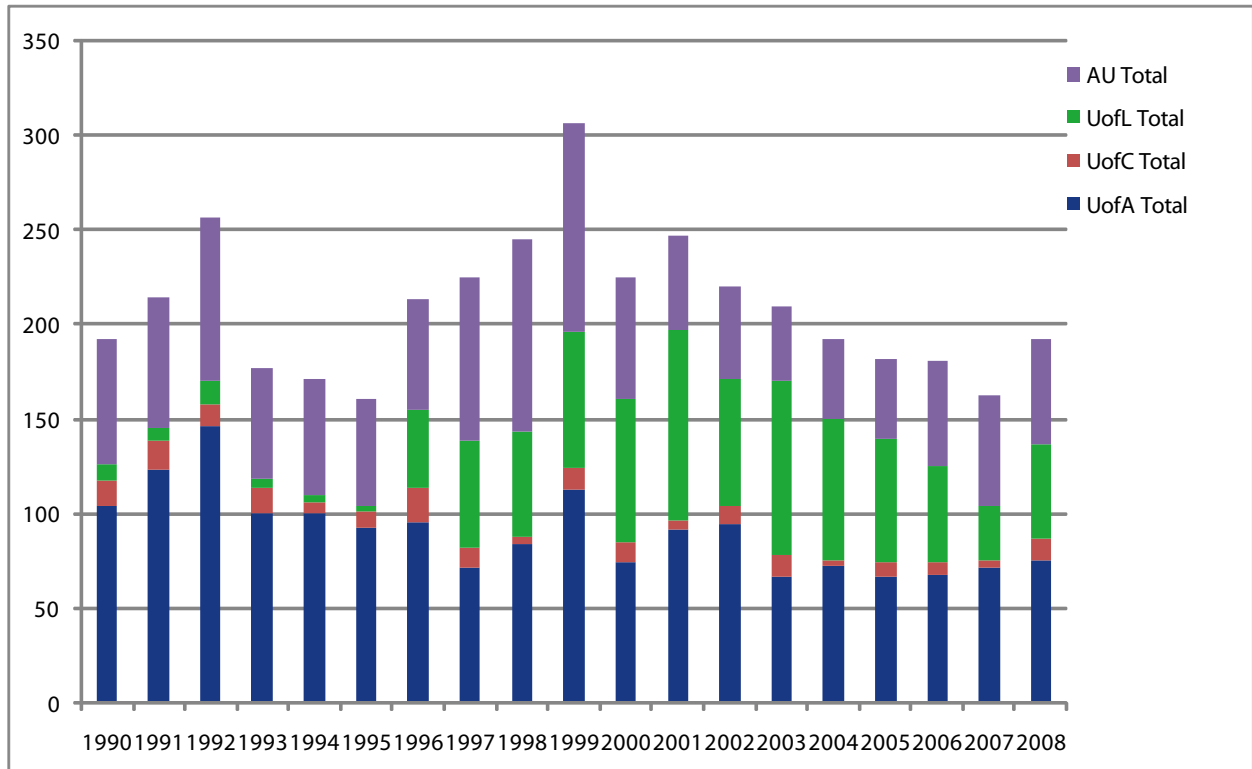


Year	UofA			UofC			UofL			AU*			Subtotals		Grand Total
	Full-time	Part-time	Total	Full-time	Part-time	Total	Full-time	Part-time	Total	Full-time	Part-time	Total	Full-time	Part-time	
1990	2	1	3	4	1	5	52	12	64		12	12	58	26	84
1991	6	2	8	6		6	30	8	38		11	11	42	21	63
1992	10	1	11	5	2	7	28	4	32		13	13	43	20	63
1993	5	2	7	3		3	19	1	20	1	21	22	28	24	52
1994	7		7	2		2	48	6	54		13	13	57	19	76
1995	7	3	10	4	1	5	93	10	103	2	12	14	106	26	132
1996	5	1	6	8		8	105	5	110	13	45	58	131	51	182
1997	6	2	8	9		9	84	10	94		63	63	99	75	174
1998	10	3	13	6		6	97	2	99		63	63	113	68	181
1999	6		6	12		12	113	3	116		80	80	131	83	214
2000	12		12	6	1	7	117	12	129		71	71	135	84	219
2001	5	4	9	14	1	15	121	7	128		47	47	140	59	199
2002	9	4	13	10	1	11	120	9	129		38	38	139	52	191
2003	11	2	13	8	1	9	129	6	135		50	50	148	59	207
2004	8	1	9	16	1	17	138	10	148		36	36	162	48	210
2005	7	1	8	11	3	14	142	9	151		57	57	160	70	230
2006	10	2	12	12	0	12	122	6	128		52	52	144	60	204
2007	10	1	11	17	2	19	123	9	132	0	31	31	150	43	193
2008	11	1	12	12	0	12	127	18	145	0	41	41	150	60	210

\* Except for 1993 - 1996, AU's entry is displayed as "part-time" though it may include some "full-time" students.

# UT: NAIT

## TRANSFERS TO ALBERTA UNIVERSITIES FROM NAIT, FALL 1990 - FALL 2008



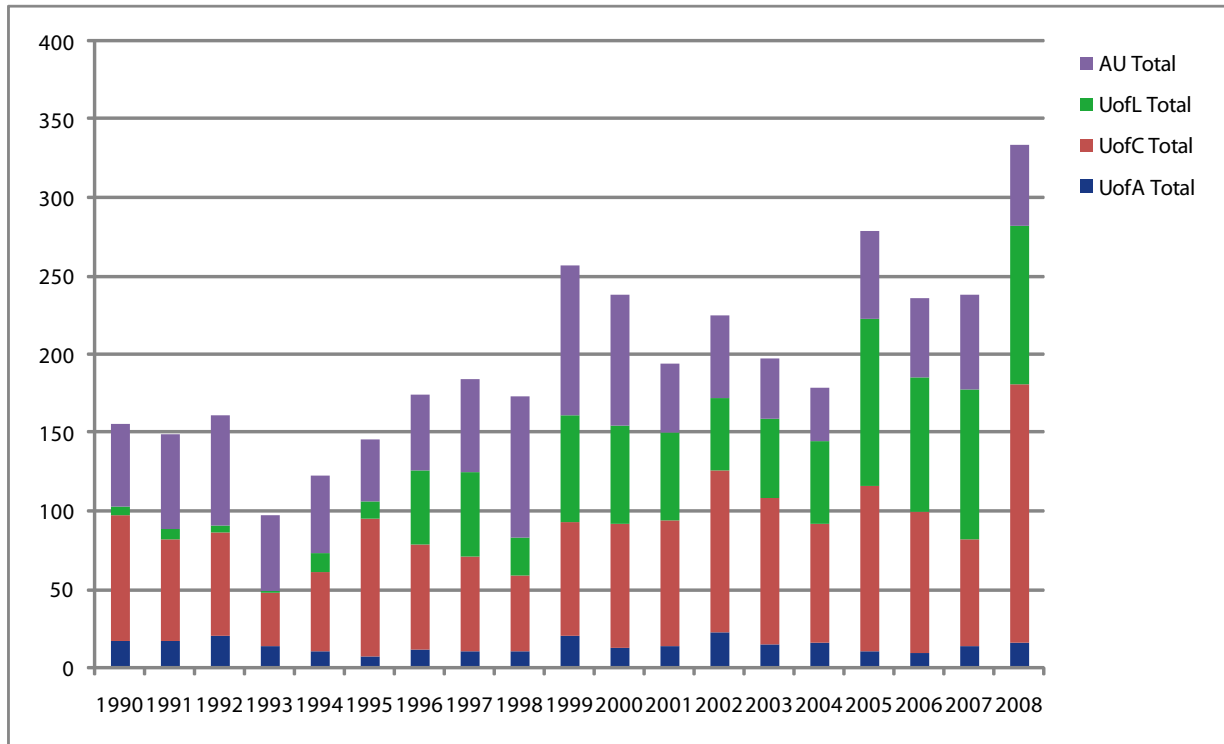
Year	UofA			UofC			UofL			AU*			Subtotals		Grand Total
	Full-time	Part-time	Total	Full-time	Part-time	Total	Full-time	Part-time	Total	Full-time	Part-time	Total	Full-time	Part-time	
1990	72	32	104	13	1	14	7	1	8		66	66	92	100	192
1991	79	44	123	11	5	16	6		6		69	69	96	118	214
1992	82	64	146	11	1	12	12		12		86	86	105	151	256
1993	71	29	100	13	1	14	5		5	6	52	58	95	82	177
1994	59	41	100	4	2	6	3	1	4	2	59	61	68	103	171
1995	70	23	93	6	2	8	2	1	3	2	55	57	80	81	161
1996	71	25	96	18		18	28	13	41	4	54	58	121	92	213
1997	55	17	72	8	2	10	38	19	57		86	86	101	124	225
1998	54	30	84	1	3	4	40	15	55		102	102	95	150	245
1999	113		113	8	3	11	44	28	72		110	110	165	141	306
2000	52	23	75	9	1	10	63	13	76		64	64	124	101	225
2001	60	32	92	4	1	5	77	23	100		50	50	141	106	247
2002	71	24	95	9		9	54	13	67		49	49	134	86	220
2003	49	18	67	9	2	11	67	25	92		39	39	125	84	209
2004	52	21	73	3		3	62	12	74		42	42	117	75	192
2005	51	16	67	8		8	53	12	65		42	42	112	70	182
2006	52	16	68	3	4	7	33	17	50		56	56	88	93	181
2007	62	10	72	4	0	4	22	6	28	0	59	59	88	75	163
2008	70	6	76	9	2	11	39	11	50	0	55	55	118	74	192

\* Except for 1993 - 1996, AU's entry is displayed as "part-time" though it may include some "full-time" students.



# UT: SAIT

## TRANSFERS TO ALBERTA UNIVERSITIES FROM SAIT, FALL 1990 - FALL 2008



Year	UofA			UofC			UofL			AU*			Subtotals		Grand Total
	Full-time	Part-time	Total	Full-time	Part-time	Total	Full-time	Part-time	Total	Full-time	Part-time	Total	Full-time	Part-time	
1990	13	3	16	44	37	81	4	1	5		53	53	61	94	155
1991	14	3	17	46	18	64	6	1	7		61	61	66	83	149
1992	11	9	20	49	17	66	4		4		71	71	64	97	161
1993	12	1	13	33	1	34	1		1	4	45	49	50	47	97
1994	8	2	10	41	10	51	11	1	12	2	47	49	62	60	122
1995	4	3	7	66	22	88	8	3	11	1	39	40	79	67	146
1996	9	2	11	60	7	67	25	23	48		48	48	94	80	174
1997	10		10	51	10	61	34	20	54		59	59	95	89	184
1998	7	3	10	38	10	48	17	8	25		90	90	62	111	173
1999	20		20	63	10	73	38	30	68		96	96	121	136	257
2000	8	4	12	71	8	79	52	11	63		84	84	131	107	238
2001	9	4	13	74	7	81	45	11	56		44	44	128	66	194
2002	17	5	22	93	11	104	37	9	46		53	53	147	78	225
2003	11	3	14	87	7	94	42	9	51		38	38	140	57	197
2004	13	2	15	68	8	76	49	4	53		35	35	130	49	179
2005	10		10	94	12	106	91	16	107		56	56	195	84	279
2006	8	1	9	82	8	90	72	14	86		51	51	162	74	236
2007	12	1	13	62	6	68	81	15	96	0	61	61	155	83	238
2008	14	1	15	151	15	166	83	18	101	0	52	52	248	86	334

\* Except for 1993 - 1996, AU's entry is displayed as "part-time" though it may include some "full-time" students.

