

ALBERTA COUNCIL ON ADMISSIONS AND TRANSFER



**TRANSFER  
PATTERNS  
EXTRACTS  
BY SECTOR  
1990 - 2007**

[www.acat.gov.ab.ca](http://www.acat.gov.ab.ca)

# INTRODUCTION



The Alberta Council on Admissions and Transfer (ACAT) is pleased to present the results of its Transfer Patterns Study, 1990-2007 Extracts By Sector. These tables have been extracted from the “Mobility Tables” component of the annual Transfer Patterns Study.

In 1979 ACAT decided to undertake a longitudinal study of transfer patterns in Alberta to provide a picture of the direction and volume of transfer traffic among post-secondary institutions.

Alberta post-secondary institutions record the number of students admitted for the first time to their institutions during the Fall admission cycle who had reported prior post-secondary experience. Part-time reports were not generally available for many non-degree granting institutions prior to 1991. Athabasca University reported full-time registrations from 1993 until 1996, but given its continuous admissions policy, has not distinguished full-time since then.

The 2007 study includes 30 institutions, including 4 universities, 14 public colleges, 2 technical institutes, 6 private colleges with accredited degree programs, and 4 private colleges. DeVry Calgary and Yellowhead Tribal College did not report for 2007.

***The following pages graphically depict the data on student transfers to and from Alberta post-***

# STUDENT TRANSFER DATA TABLES



*secondary institutions as listed below.*

## ***Transfers to***



Number of students transferring from Alberta post-secondary institutions to Alberta:

1. Post-secondary institutions
2. Universities
3. Public colleges
4. Technical institutes
5. Private colleges with accredited degree programs
6. Private colleges

## ***Transfers from***

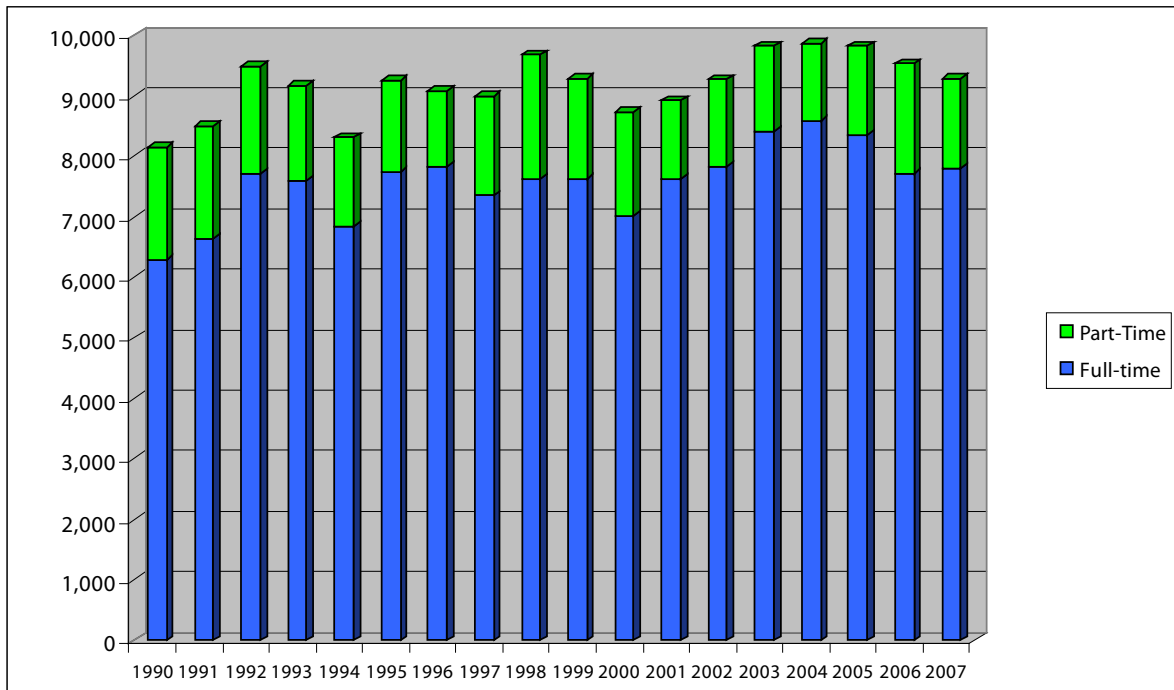


Number of students transferring to Alberta universities from public colleges with university transfer programs from:

1. Grande Prairie Regional College
2. Grant MacEwan College
3. Keyano College
4. Lakeland College
5. Medicine Hat College
6. Mount Royal College
7. Northern Lakes College
8. Portage College
9. Red Deer College
10. All colleges with university transfer programs
11. Lethbridge College
12. NAIT
13. SAIT

# WITHIN PROVINCE TRANSFER

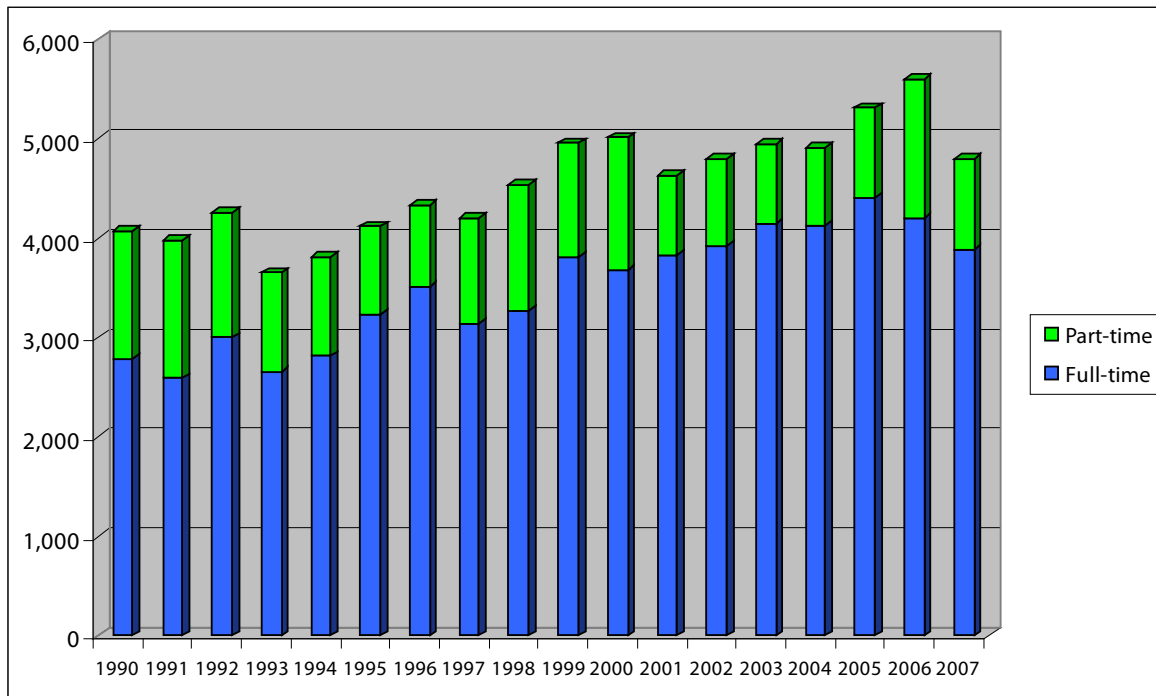
TRANSFER TO ALBERTA POST-SECONDARY INSTITUTIONS, FALL 1990 - FALL 2007



| Year | Full-time | Part-Time | Total |
|------|-----------|-----------|-------|
| 1990 | 6,289     | 1,861     | 8,150 |
| 1991 | 6,641     | 1,853     | 8,494 |
| 1992 | 7,726     | 1,763     | 9,489 |
| 1993 | 7,610     | 1,560     | 9,170 |
| 1994 | 6,843     | 1,473     | 8,316 |
| 1995 | 7,750     | 1,508     | 9,258 |
| 1996 | 7,842     | 1,251     | 9,093 |
| 1997 | 7,353     | 1,645     | 8,998 |
| 1998 | 7,637     | 2,043     | 9,680 |
| 1999 | 7,638     | 1,648     | 9,286 |
| 2000 | 7,023     | 1,722     | 8,745 |
| 2001 | 7,636     | 1,288     | 8,924 |
| 2002 | 7,841     | 1,429     | 9,270 |
| 2003 | 8,411     | 1,416     | 9,827 |
| 2004 | 8,587     | 1,278     | 9,865 |
| 2005 | 8,359     | 1,468     | 9,827 |
| 2006 | 7,727     | 1,807     | 9,534 |
| 2007 | 7,804     | 1,474     | 9,278 |

# TO UNIVERSITIES

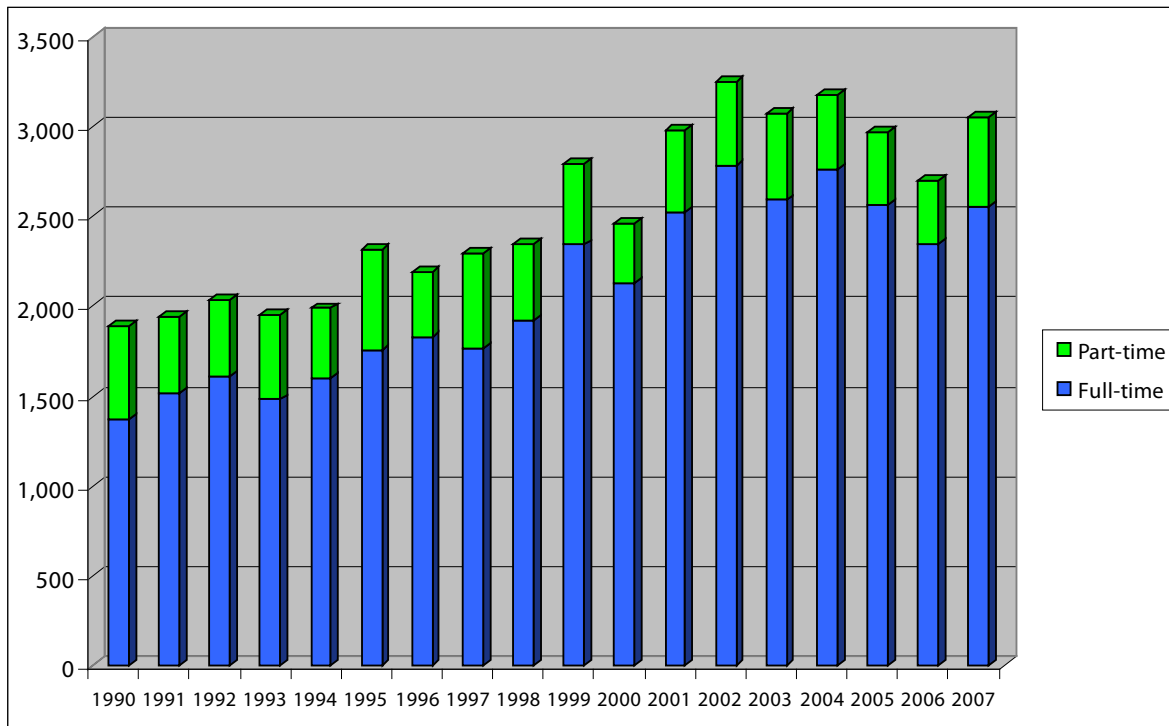
WITHIN PROVINCE TRANSFER TO ALBERTA UNIVERSITIES, FALL 1990 - FALL 2007



| Year | Full-time | Part-time | Total |
|------|-----------|-----------|-------|
| 1990 | 2,782     | 1,293     | 4,075 |
| 1991 | 2,589     | 1,383     | 3,972 |
| 1992 | 2,998     | 1,254     | 4,252 |
| 1993 | 2,659     | 992       | 3,651 |
| 1994 | 2,815     | 994       | 3,809 |
| 1995 | 3,240     | 876       | 4,116 |
| 1996 | 3,510     | 828       | 4,338 |
| 1997 | 3,146     | 1,058     | 4,204 |
| 1998 | 3,275     | 1,266     | 4,541 |
| 1999 | 3,812     | 1,145     | 4,957 |
| 2000 | 3,677     | 1,334     | 5,011 |
| 2001 | 3,835     | 800       | 4,635 |
| 2002 | 3,921     | 878       | 4,799 |
| 2003 | 4,139     | 814       | 4,953 |
| 2004 | 4,127     | 778       | 4,905 |
| 2005 | 4,400     | 909       | 5,309 |
| 2006 | 4,199     | 1,404     | 5,603 |
| 2007 | 3,887     | 914       | 4,801 |

# TO PUBLIC COLLEGES

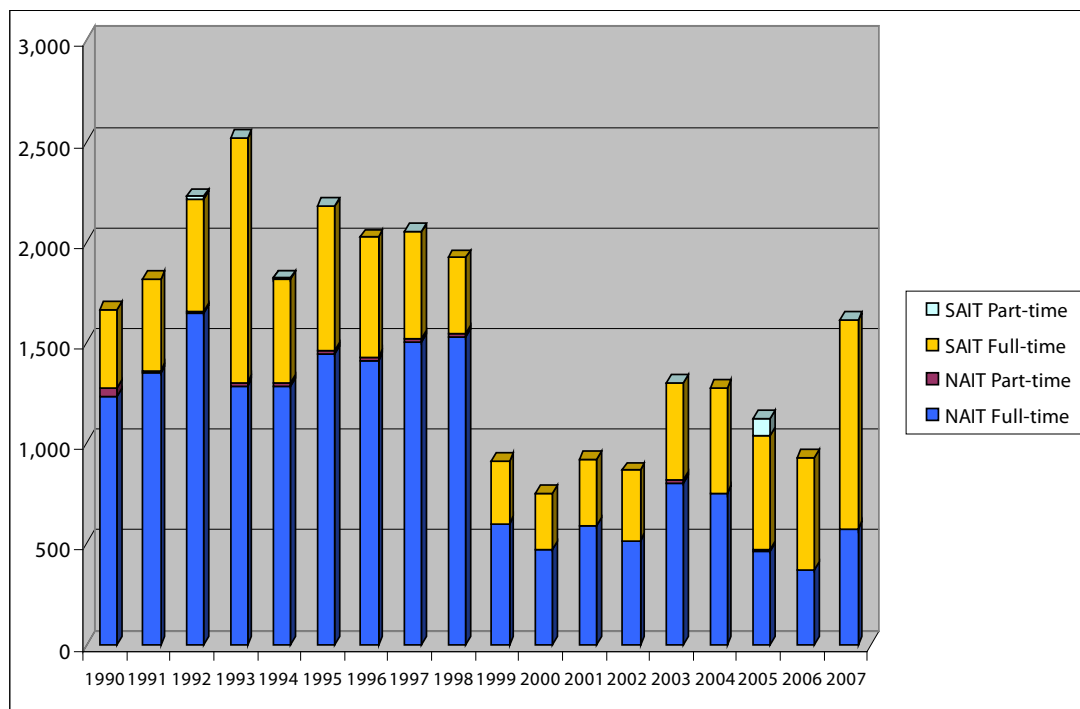
WITHIN PROVINCE TRANSFER TO ALBERTA PUBLIC COLLEGES, FALL 1990 - FALL 2007



| Year | Full-time | Part-time | Total |
|------|-----------|-----------|-------|
| 1990 | 1,372     | 517       | 1,889 |
| 1991 | 1,517     | 427       | 1,944 |
| 1992 | 1,614     | 419       | 2,033 |
| 1993 | 1,479     | 470       | 1,949 |
| 1994 | 1,596     | 392       | 1,988 |
| 1995 | 1,751     | 567       | 2,318 |
| 1996 | 1,824     | 371       | 2,195 |
| 1997 | 1,768     | 525       | 2,293 |
| 1998 | 1,921     | 428       | 2,349 |
| 1999 | 2,342     | 452       | 2,794 |
| 2000 | 2,131     | 327       | 2,458 |
| 2001 | 2,527     | 455       | 2,982 |
| 2002 | 2,782     | 466       | 3,248 |
| 2003 | 2,591     | 485       | 3,076 |
| 2004 | 2,761     | 416       | 3,177 |
| 2005 | 2,563     | 407       | 2,970 |
| 2006 | 2,347     | 357       | 2,704 |
| 2007 | 2,555     | 500       | 3,055 |

# TO TECHNICAL INSTITUTES

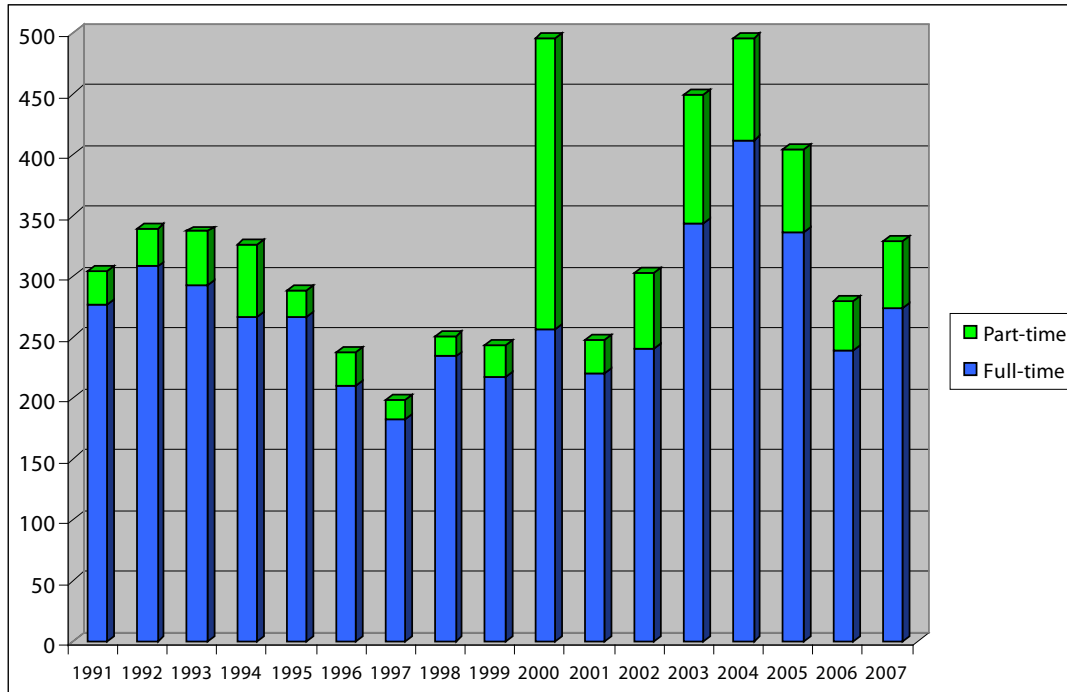
WITHIN PROVINCE TRANSFER TO ALBERTA TECHNICAL INSTITUTES, FALL 1990 - FALL 2007



| Year | NAIT      |           | SAIT      |           | Subtotals |           | Grand Total |
|------|-----------|-----------|-----------|-----------|-----------|-----------|-------------|
|      | Full-time | Part-time | Full-time | Part-time | Full-time | Part-time |             |
| 1990 | 1,236     | 37        | 392       |           | 1,628     | 37        | 1,665       |
| 1991 | 1,348     | 11        | 459       |           | 1,807     | 11        | 1,818       |
| 1992 | 1,645     | 14        | 555       | 12        | 2,200     | 26        | 2,226       |
| 1993 | 1,288     | 14        | 1,212     | 6         | 2,500     | 20        | 2,520       |
| 1994 | 1,282     | 20        | 517       | 2         | 1,799     | 22        | 1,821       |
| 1995 | 1,442     | 21        | 713       | 2         | 2,155     | 23        | 2,178       |
| 1996 | 1,408     | 18        | 597       |           | 2,005     | 18        | 2,023       |
| 1997 | 1,507     | 14        | 528       | 1         | 2,035     | 15        | 2,050       |
| 1998 | 1,530     | 15        | 377       |           | 1,907     | 15        | 1,922       |
| 1999 | 603       |           | 313       |           | 916       | 0         | 916         |
| 2000 | 471       |           | 282       |           | 753       | 0         | 753         |
| 2001 | 593       |           | 332       |           | 925       | 0         | 925         |
| 2002 | 518       |           | 349       |           | 867       | 0         | 867         |
| 2003 | 804       | 14        | 484       | 2         | 1,288     | 16        | 1,304       |
| 2004 | 755       |           | 521       |           | 1,276     | 0         | 1,276       |
| 2005 | 467       | 4         | 570       | 80        | 1,037     | 84        | 1,121       |
| 2006 | 373       | 2         | 555       |           | 928       | 2         | 930         |
| 2007 | 572       | 0         | 1,038     | 1         | 1,610     | 1         | 1,611       |

# TO PRIVATE COLLEGES WITH ACCREDITED DEGREES\*

## WITHIN PROVINCE TRANSFER TO ALBERTA PRIVATE COLLEGES WITH ACCREDITED DEGREE PROGRAMS, FALL 1990 - FALL 2007



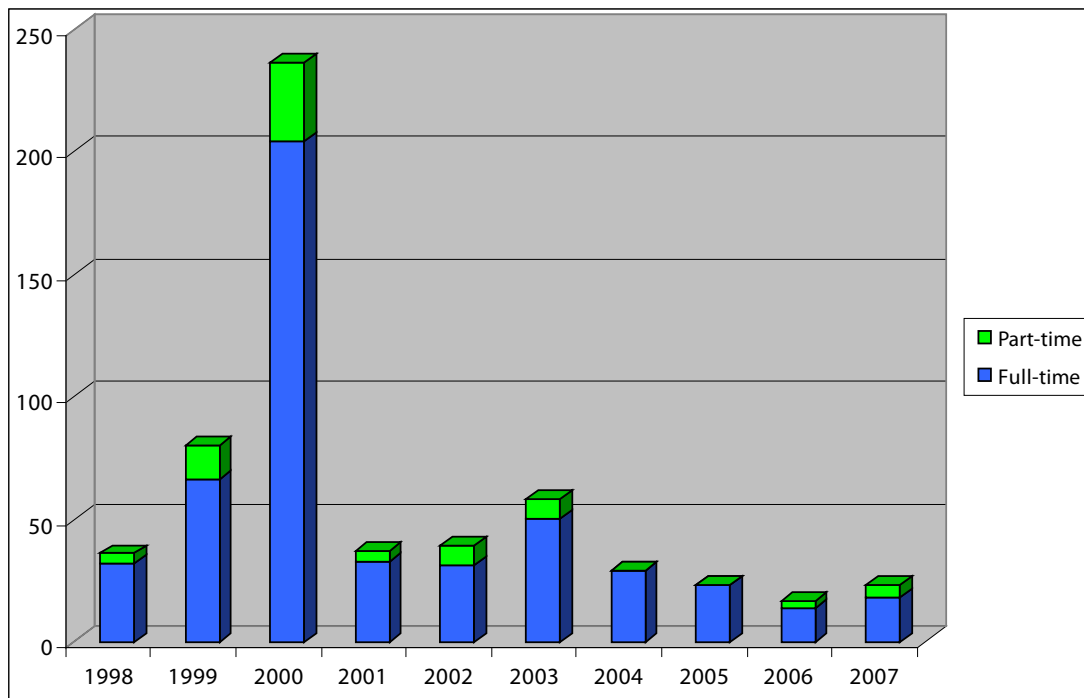
| Year | Full-time | Part-time | Total |
|------|-----------|-----------|-------|
| 1991 | 277       | 27        | 304   |
| 1992 | 308       | 31        | 339   |
| 1993 | 293       | 44        | 337   |
| 1994 | 267       | 59        | 326   |
| 1995 | 267       | 22        | 289   |
| 1996 | 210       | 28        | 238   |
| 1997 | 182       | 17        | 199   |
| 1998 | 234       | 17        | 251   |
| 1999 | 218       | 26        | 244   |
| 2000 | 257       | 239       | 496   |
| 2001 | 220       | 28        | 248   |
| 2002 | 240       | 63        | 303   |
| 2003 | 343       | 107       | 450   |
| 2004 | 412       | 84        | 496   |
| 2005 | 336       | 68        | 404   |
| 2006 | 239       | 41        | 280   |
| 2007 | 274       | 55        | 329   |

\* The number of institutions in this sector has varied since 1991. When a private college receives authorization to offer degree programs, its transfer students have been added in this sector. DeVry did not report for Fall 2007.



# TO OTHER PRIVATE COLLEGES\*

← WITHIN PROVINCE TRANSFER TO ALBERTA PRIVATE COLLEGES, FALL 1998 - FALL 2007 →

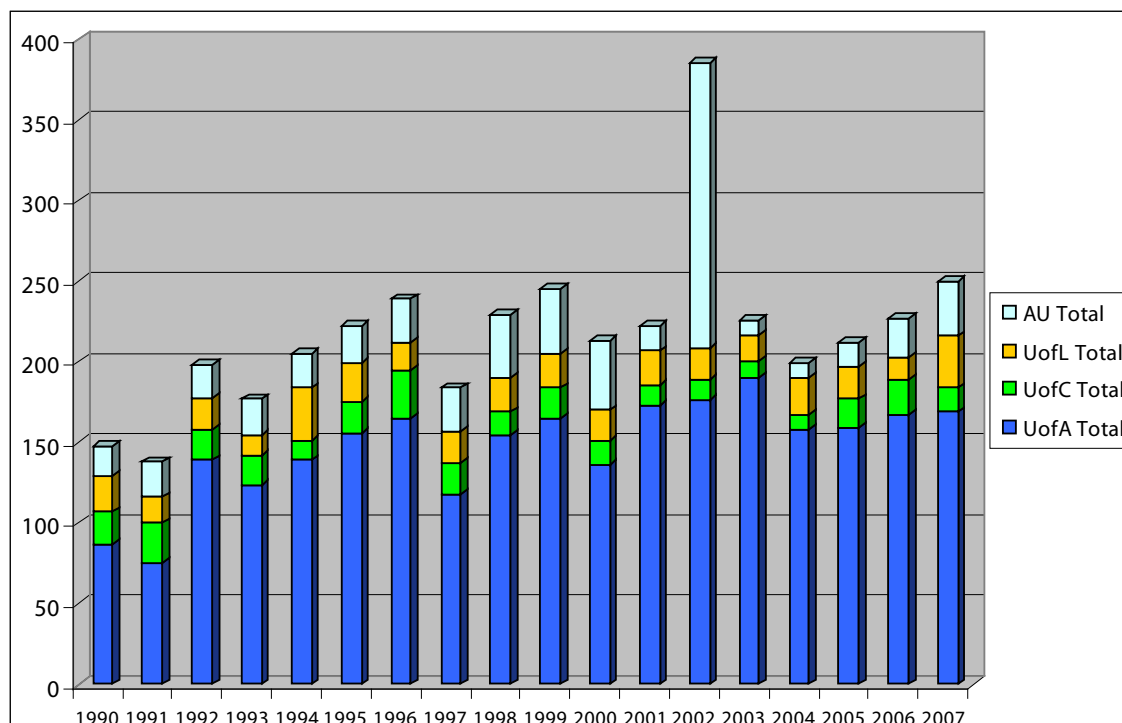


| Year | Full-time | Part-time | Total |
|------|-----------|-----------|-------|
| 1998 | 32        | 4         | 36    |
| 1999 | 66        | 14        | 80    |
| 2000 | 204       | 32        | 236   |
| 2001 | 33        | 4         | 37    |
| 2002 | 31        | 8         | 39    |
| 2003 | 50        | 8         | 58    |
| 2004 | 29        | 0         | 29    |
| 2005 | 23        | 0         | 23    |
| 2006 | 14        | 3         | 17    |
| 2007 | 18        | 5         | 23    |

\* The number of institutions reporting varies each year. Since 1998, a number of private colleges were authorized to offer accredited degrees; this results in their transfer being indicated in the Private Colleges with Accredited Degrees sector. Yellowhead Tribal College did not report for fall 2007.

# UT: GRANDE PRAIRIE REGIONAL COLLEGE

## STUDENTS TRANSFERRING TO ALBERTA UNIVERSITIES FROM GRANDE PRAIRIE REGIONAL COLLEGE, FALL 1990 - FALL 2007

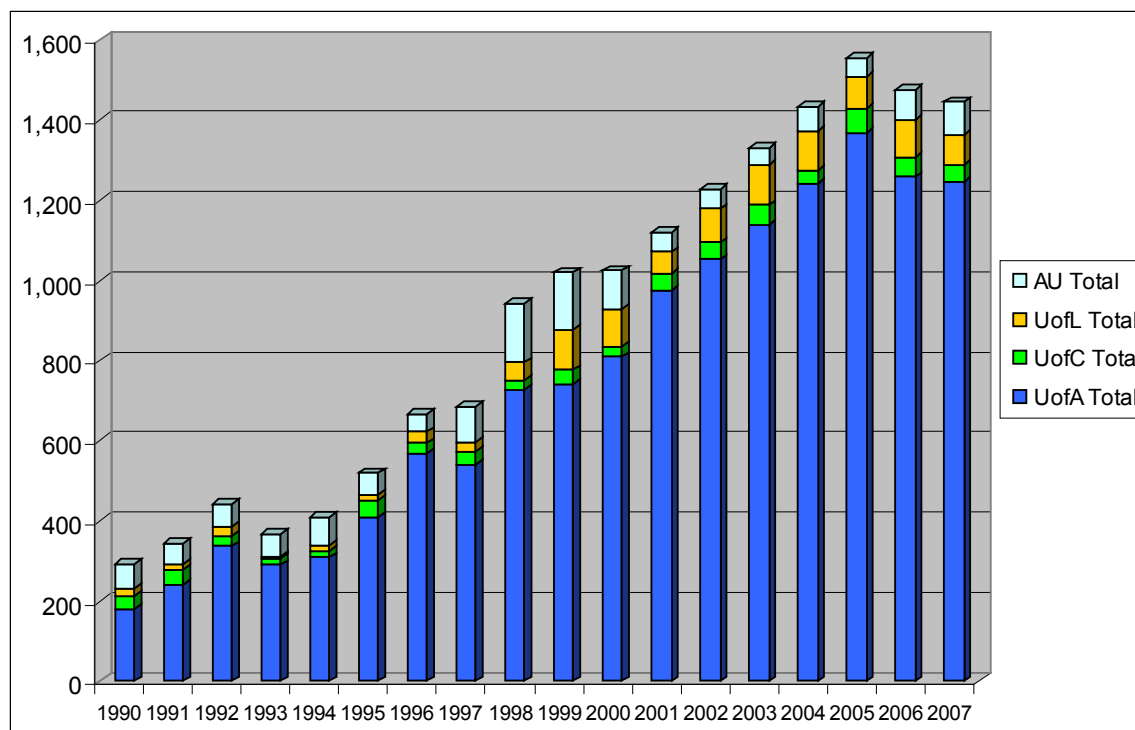


| Year | UofA      |           |       | Uof C     |           |       | UofL      |           |       | AU*       |           |       | Subtotals |           | Grand Total |
|------|-----------|-----------|-------|-----------|-----------|-------|-----------|-----------|-------|-----------|-----------|-------|-----------|-----------|-------------|
|      | Full-time | Part-time | Total | Full-time | Part-time | Total | Full-time | Part-time | Total | Full-time | Part-time | Total | Full-time | Part-time |             |
| 1990 | 85        | 2         | 87    | 19        | 1         | 20    | 22        | 0         | 22    |           | 19        | 19    | 126       | 22        | 148         |
| 1991 | 72        | 3         | 75    | 23        | 2         | 25    | 16        | 0         | 16    | 0         | 22        | 22    | 111       | 27        | 138         |
| 1992 | 123       | 16        | 139   | 19        | 0         | 19    | 20        | 0         | 20    | 0         | 20        | 20    | 162       | 36        | 198         |
| 1993 | 116       | 8         | 124   | 18        | 0         | 18    | 13        | 0         | 13    | 2         | 20        | 22    | 149       | 28        | 177         |
| 1994 | 137       | 2         | 139   | 11        | 1         | 12    | 32        | 1         | 33    | 1         | 20        | 21    | 181       | 24        | 205         |
| 1995 | 150       | 6         | 156   | 19        | 0         | 19    | 24        | 0         | 24    | 1         | 22        | 23    | 194       | 28        | 222         |
| 1996 | 157       | 8         | 165   | 30        | 0         | 30    | 17        | 0         | 17    | 4         | 23        | 27    | 208       | 31        | 239         |
| 1997 | 112       | 6         | 118   | 18        | 1         | 19    | 19        | 1         | 20    | 0         | 27        | 27    | 149       | 35        | 184         |
| 1998 | 147       | 8         | 155   | 13        | 1         | 14    | 21        | 0         | 21    | 0         | 39        | 39    | 181       | 48        | 229         |
| 1999 | 165       | 0         | 165   | 19        | 0         | 19    | 21        | 0         | 21    | 0         | 40        | 40    | 205       | 40        | 245         |
| 2000 | 131       | 5         | 136   | 15        | 0         | 15    | 19        | 0         | 19    | 0         | 43        | 43    | 165       | 48        | 213         |
| 2001 | 167       | 6         | 173   | 12        | 1         | 13    | 21        | 0         | 21    | 0         | 15        | 15    | 200       | 22        | 222         |
| 2002 | 170       | 6         | 176   | 13        | 0         | 13    | 19        | 1         | 20    | 7         | 170       | 177   | 209       | 177       | 386         |
| 2003 | 184       | 6         | 190   | 11        | 0         | 11    | 16        | 0         | 16    | 0         | 9         | 9     | 211       | 15        | 226         |
| 2004 | 154       | 4         | 158   | 9         | 0         | 9     | 23        | 0         | 23    | 0         | 9         | 9     | 186       | 13        | 199         |
| 2005 | 157       | 2         | 159   | 17        | 1         | 18    | 19        | 1         | 20    | 0         | 15        | 15    | 193       | 19        | 212         |
| 2006 | 166       | 1         | 167   | 20        | 2         | 22    | 14        | 0         | 14    | 0         | 24        | 24    | 200       | 27        | 227         |
| 2007 | 165       | 4         | 169   | 15        | 0         | 15    | 30        | 2         | 32    | 0         | 34        | 34    | 210       | 40        | 250         |

\* Except for 1993 - 1996, AU's entry is displayed as "part-time" though it may include some "full-time" students.

# UT: GRANT MACEWAN COLLEGE

## STUDENTS TRANSFERRING TO ALBERTA UNIVERSITIES FROM GRANT MACEWAN COLLEGE, FALL 1990 - FALL 2007

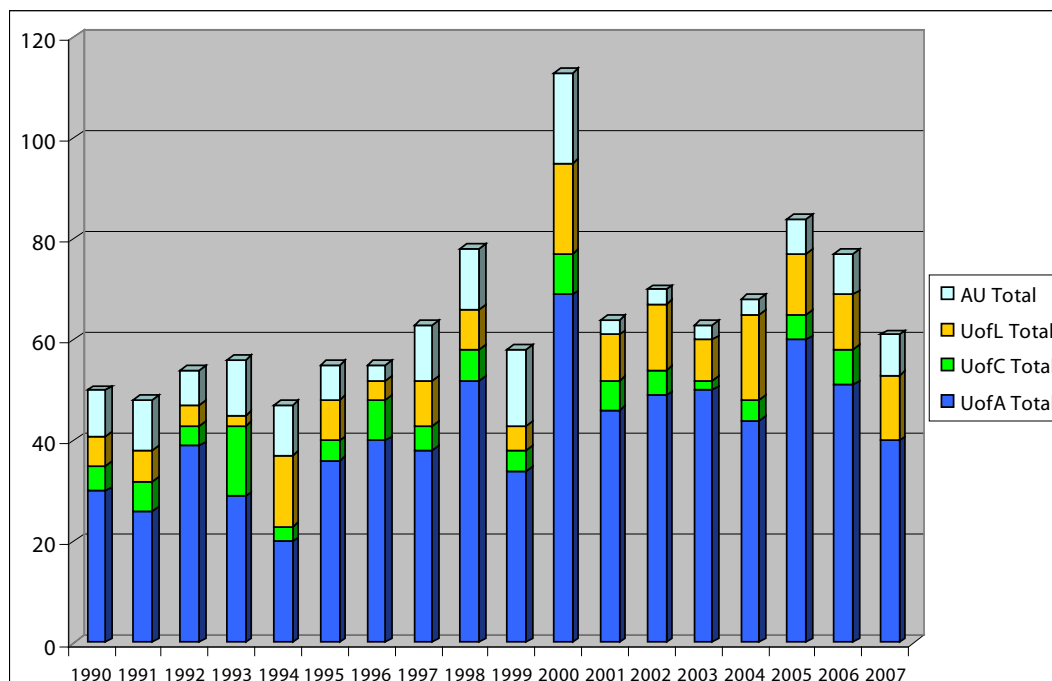


| Year | UofA      |           |       | Uof C     |           |       | UofL      |           |       | AU*       |           |       | Subtotals |           | Grand Total |
|------|-----------|-----------|-------|-----------|-----------|-------|-----------|-----------|-------|-----------|-----------|-------|-----------|-----------|-------------|
|      | Full-time | Part-time | Total | Full-time | Part-time | Total | Full-time | Part-time | Total | Full-time | Part-time | Total | Full-time | Part-time |             |
| 1990 | 133       | 48        | 181   | 24        | 7         | 31    | 19        | 1         | 20    |           | 62        | 62    | 176       | 118       | 294         |
| 1991 | 175       | 68        | 243   | 32        | 3         | 35    | 14        |           | 14    |           | 51        | 51    | 221       | 122       | 343         |
| 1992 | 254       | 83        | 337   | 22        | 4         | 26    | 24        |           | 24    |           | 57        | 57    | 300       | 144       | 444         |
| 1993 | 225       | 66        | 291   | 14        | 1         | 15    | 5         |           | 5     | 10        | 48        | 58    | 254       | 115       | 369         |
| 1994 | 252       | 57        | 309   | 17        | 1         | 18    | 13        |           | 13    | 15        | 55        | 70    | 297       | 113       | 410         |
| 1995 | 341       | 69        | 410   | 39        | 3         | 42    | 15        |           | 15    | 5         | 47        | 52    | 400       | 119       | 519         |
| 1996 | 489       | 79        | 568   | 25        | 2         | 27    | 22        | 6         | 28    | 5         | 39        | 44    | 541       | 126       | 667         |
| 1997 | 477       | 65        | 542   | 26        | 4         | 30    | 23        | 2         | 25    |           | 89        | 89    | 526       | 160       | 686         |
| 1998 | 634       | 92        | 726   | 22        | 3         | 25    | 41        | 3         | 44    |           | 149       | 149   | 697       | 247       | 944         |
| 1999 | 740       |           | 740   | 33        | 4         | 37    | 88        | 11        | 99    |           | 144       | 144   | 861       | 159       | 1,020       |
| 2000 | 728       | 82        | 810   | 23        | 3         | 26    | 74        | 17        | 91    |           | 97        | 97    | 825       | 199       | 1,024       |
| 2001 | 893       | 81        | 974   | 40        | 2         | 42    | 47        | 8         | 55    |           | 49        | 49    | 980       | 140       | 1,120       |
| 2002 | 957       | 96        | 1,053 | 36        | 5         | 41    | 77        | 8         | 85    |           | 49        | 49    | 1070      | 158       | 1,228       |
| 2003 | 1042      | 97        | 1,139 | 48        | 1         | 49    | 94        | 6         | 100   |           | 42        | 42    | 1184      | 146       | 1,330       |
| 2004 | 1151      | 92        | 1,243 | 28        | 3         | 31    | 92        | 8         | 100   |           | 58        | 58    | 1271      | 161       | 1,432       |
| 2005 | 1271      | 97        | 1,368 | 52        | 8         | 60    | 62        | 17        | 79    |           | 48        | 48    | 1385      | 170       | 1,555       |
| 2006 | 1164      | 94        | 1,258 | 43        | 7         | 50    | 81        | 12        | 93    |           | 73        | 73    | 1288      | 186       | 1,474       |
| 2007 | 1,175     | 72        | 1,247 | 35        | 6         | 41    | 66        | 9         | 75    |           | 82        | 82    | 1,276     | 169       | 1,445       |

\* Except for 1993 - 1996, AU's entry is displayed as "part-time" though it may include some "full-time" students.

# UT: KEYANO COLLEGE

## STUDENTS TRANSFERRING TO ALBERTA UNIVERSITIES FROM KEYANO COLLEGE, FALL 1990 - FALL 2007

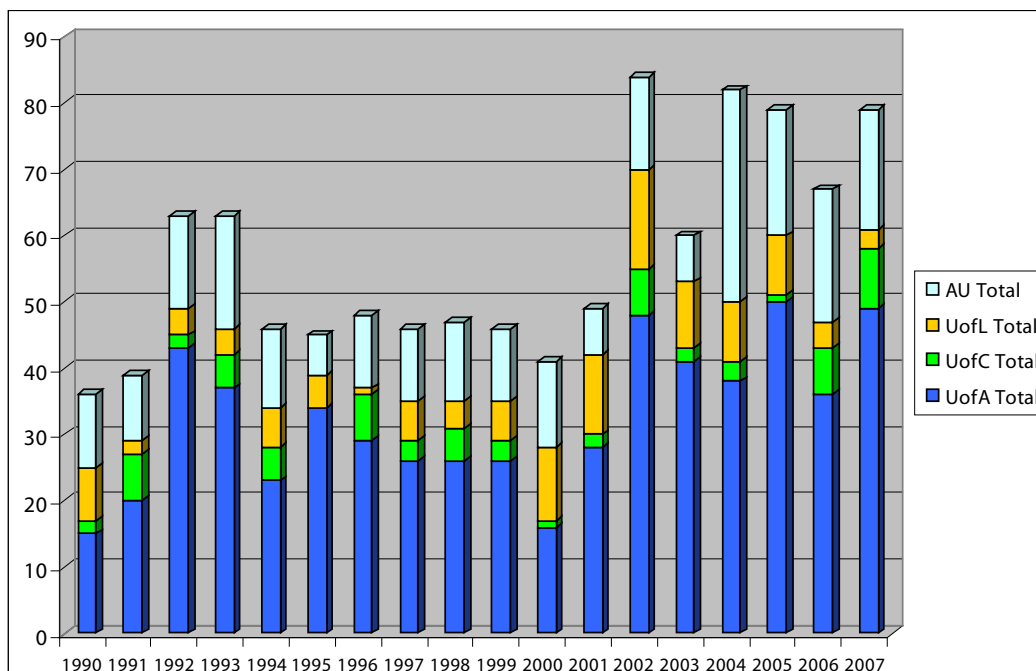


| Year | UofA      |           |       | UofC      |           |       | UofL      |           |       | AU*       |           |       | Subtotals |           | Grand Total |
|------|-----------|-----------|-------|-----------|-----------|-------|-----------|-----------|-------|-----------|-----------|-------|-----------|-----------|-------------|
|      | Full-time | Part-time | Total | Full-time | Part-time | Total | Full-time | Part-time | Total | Full-time | Part-time | Total | Full-time | Part-time |             |
| 1990 | 30        |           | 30    | 5         |           | 5     | 6         |           | 6     |           | 9         | 9     | 41        | 9         | 50          |
| 1991 | 25        | 1         | 26    | 5         | 1         | 6     | 6         |           | 6     |           | 10        | 10    | 36        | 12        | 48          |
| 1992 | 35        | 4         | 39    | 4         |           | 4     | 4         |           | 4     |           | 7         | 7     | 43        | 11        | 54          |
| 1993 | 26        | 3         | 29    | 14        |           | 14    | 2         |           | 2     | 2         | 9         | 11    | 44        | 12        | 56          |
| 1994 | 19        | 1         | 20    | 3         |           | 3     | 13        | 1         | 14    |           | 10        | 10    | 35        | 12        | 47          |
| 1995 | 36        |           | 36    | 4         |           | 4     | 8         |           | 8     |           | 7         | 7     | 48        | 7         | 55          |
| 1996 | 36        | 4         | 40    | 8         |           | 8     | 3         | 1         | 4     | 1         | 2         | 3     | 48        | 7         | 55          |
| 1997 | 38        |           | 38    | 5         |           | 5     | 9         |           | 9     |           | 11        | 11    | 52        | 11        | 63          |
| 1998 | 49        | 3         | 52    | 6         |           | 6     | 8         |           | 8     |           | 12        | 12    | 63        | 15        | 78          |
| 1999 | 34        |           | 34    | 4         |           | 4     | 5         |           | 5     |           | 15        | 15    | 43        | 15        | 58          |
| 2000 | 66        | 3         | 69    | 8         |           | 8     | 17        | 1         | 18    |           | 18        | 18    | 91        | 22        | 113         |
| 2001 | 43        | 3         | 46    | 6         |           | 6     | 9         |           | 9     |           | 3         | 3     | 58        | 6         | 64          |
| 2002 | 48        | 1         | 49    | 5         |           | 5     | 13        |           | 13    |           | 3         | 3     | 66        | 4         | 70          |
| 2003 | 49        | 1         | 50    | 2         |           | 2     | 8         |           | 8     |           | 3         | 3     | 59        | 4         | 63          |
| 2004 | 42        | 2         | 44    | 4         |           | 4     | 17        |           | 17    |           | 3         | 3     | 63        | 5         | 68          |
| 2005 | 59        | 1         | 60    | 5         |           | 5     | 12        |           | 12    |           | 7         | 7     | 76        | 8         | 84          |
| 2006 | 51        |           | 51    | 7         |           | 7     | 11        |           | 11    |           | 8         | 8     | 69        | 8         | 77          |
| 2007 | 39        | 1         | 40    | 0         | 0         | 0     | 13        | 0         | 13    |           | 8         | 8     | 52        | 9         | 61          |

\* Except for 1993 - 1996, AU's entry is displayed as "part-time" though it may include some "full-time" students.

# UT: LAKELAND COLLEGE

## STUDENTS TRANSFERRING TO ALBERTA UNIVERSITIES FROM LAKELAND COLLEGE, FALL 1990 - FALL 2007

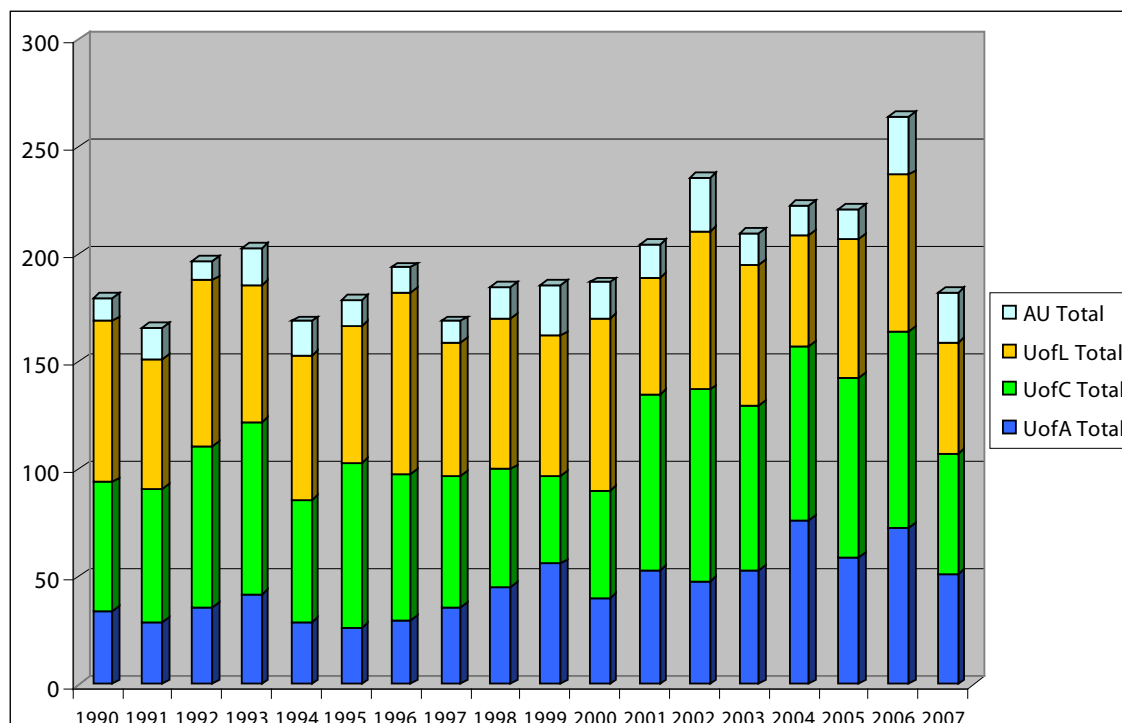


| Year | UofA      |           |       | UofC      |           |       | UofL      |           |       | AU*       |           |       | Subtotals |           | Grand Total |
|------|-----------|-----------|-------|-----------|-----------|-------|-----------|-----------|-------|-----------|-----------|-------|-----------|-----------|-------------|
|      | Full-time | Part-time | Total | Full-time | Part-time | Total | Full-time | Part-time | Total | Full-time | Part-time | Total | Full-time | Part-time |             |
| 1990 | 12        | 3         | 15    | 2         |           | 2     | 7         | 1         | 8     |           | 11        | 11    | 21        | 15        | 36          |
| 1991 | 19        | 1         | 20    | 5         | 2         | 7     | 2         |           | 2     |           | 10        | 10    | 26        | 13        | 39          |
| 1992 | 38        | 5         | 43    | 2         |           | 2     | 4         |           | 4     |           | 14        | 14    | 44        | 19        | 63          |
| 1993 | 34        | 3         | 37    | 5         |           | 5     | 4         |           | 4     | 1         | 16        | 17    | 44        | 19        | 63          |
| 1994 | 23        |           | 23    | 5         |           | 5     | 6         |           | 6     |           | 12        | 12    | 34        | 12        | 46          |
| 1995 | 32        | 2         | 34    |           |           | 0     | 5         |           | 5     |           | 6         | 6     | 37        | 8         | 45          |
| 1996 | 28        | 1         | 29    | 7         |           | 7     | 1         |           | 1     | 2         | 9         | 11    | 38        | 10        | 48          |
| 1997 | 25        | 1         | 26    | 3         |           | 3     | 6         |           | 6     |           | 11        | 11    | 34        | 12        | 46          |
| 1998 | 26        |           | 26    | 5         |           | 5     | 4         |           | 4     |           | 12        | 12    | 35        | 12        | 47          |
| 1999 | 26        |           | 26    | 3         |           | 3     | 6         |           | 6     |           | 11        | 11    | 35        | 11        | 46          |
| 2000 | 13        | 3         | 16    | 1         |           | 1     | 11        |           | 11    |           | 13        | 13    | 25        | 16        | 41          |
| 2001 | 26        | 2         | 28    | 1         | 1         | 2     | 12        |           | 12    |           | 7         | 7     | 39        | 10        | 49          |
| 2002 | 47        | 1         | 48    | 6         | 1         | 7     | 15        |           | 15    |           | 14        | 14    | 68        | 16        | 84          |
| 2003 | 39        | 2         | 41    | 2         |           | 2     | 10        |           | 10    |           | 7         | 7     | 51        | 9         | 60          |
| 2004 | 34        | 4         | 38    | 2         | 1         | 3     | 9         |           | 9     |           | 32        | 32    | 45        | 37        | 82          |
| 2005 | 49        | 1         | 50    | 1         |           | 1     | 9         |           | 9     |           | 19        | 19    | 59        | 20        | 79          |
| 2006 | 31        | 5         | 36    | 6         | 1         | 7     | 4         |           | 4     |           | 20        | 20    | 41        | 26        | 67          |
| 2007 | 47        | 2         | 49    | 8         | 1         | 9     | 3         |           | 3     |           | 18        | 18    | 58        | 21        | 79          |

\* Except for 1993 - 1996, AU's entry is displayed as "part-time" though it may include some "full-time" students.

# UT: MEDICINE HAT COLLEGE

## STUDENTS TRANSFERRING TO ALBERTA UNIVERSITIES FROM MEDICINE HAT COLLEGE, FALL 1990 - FALL 2007

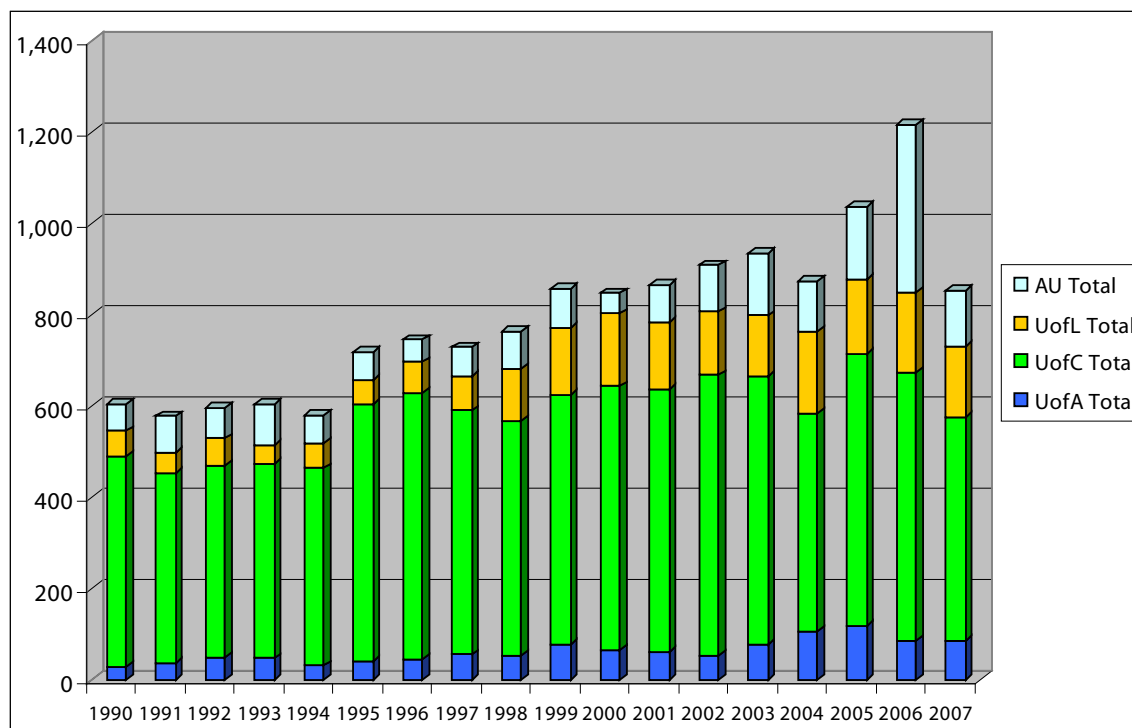


| Year | UofA      |           |       | UofC      |           |       | UofL      |           |       | AU*       |           |       | Subtotals |           | Grand Total |
|------|-----------|-----------|-------|-----------|-----------|-------|-----------|-----------|-------|-----------|-----------|-------|-----------|-----------|-------------|
|      | Full-time | Part-time | Total | Full-time | Part-time | Total | Full-time | Part-time | Total | Full-time | Part-time | Total | Full-time | Part-time |             |
| 1990 | 34        |           | 34    | 57        | 3         | 60    | 74        | 1         | 75    |           | 11        | 11    | 165       | 15        | 180         |
| 1991 | 26        | 3         | 29    | 58        | 4         | 62    | 56        | 4         | 60    |           | 15        | 15    | 140       | 26        | 166         |
| 1992 | 36        |           | 36    | 69        | 6         | 75    | 77        |           | 77    |           | 9         | 9     | 182       | 15        | 197         |
| 1993 | 42        |           | 42    | 76        | 4         | 80    | 62        | 2         | 64    | 2         | 15        | 17    | 182       | 21        | 203         |
| 1994 | 28        | 1         | 29    | 56        | 1         | 57    | 60        | 7         | 67    | 1         | 15        | 16    | 145       | 24        | 169         |
| 1995 | 25        | 1         | 26    | 73        | 4         | 77    | 64        |           | 64    | 1         | 11        | 12    | 163       | 16        | 179         |
| 1996 | 29        | 1         | 30    | 67        | 1         | 68    | 80        | 4         | 84    | 1         | 11        | 12    | 177       | 17        | 194         |
| 1997 | 35        | 1         | 36    | 59        | 2         | 61    | 62        |           | 62    |           | 10        | 10    | 156       | 13        | 169         |
| 1998 | 44        | 1         | 45    | 55        |           | 55    | 70        |           | 70    |           | 15        | 15    | 169       | 16        | 185         |
| 1999 | 56        |           | 56    | 40        | 1         | 41    | 61        | 4         | 65    |           | 24        | 24    | 157       | 29        | 186         |
| 2000 | 39        | 1         | 40    | 45        | 5         | 50    | 78        | 2         | 80    |           | 17        | 17    | 162       | 25        | 187         |
| 2001 | 49        | 4         | 53    | 80        | 2         | 82    | 54        |           | 54    |           | 16        | 16    | 183       | 22        | 205         |
| 2002 | 44        | 4         | 48    | 85        | 4         | 89    | 72        | 2         | 74    |           | 25        | 25    | 201       | 35        | 236         |
| 2003 | 47        | 6         | 53    | 76        | 1         | 77    | 63        | 2         | 65    |           | 15        | 15    | 186       | 24        | 210         |
| 2004 | 73        | 3         | 76    | 80        | 1         | 81    | 50        | 2         | 52    |           | 14        | 14    | 203       | 20        | 223         |
| 2005 | 58        | 1         | 59    | 82        | 2         | 84    | 63        | 1         | 64    |           | 14        | 14    | 203       | 18        | 221         |
| 2006 | 72        | 1         | 73    | 90        | 1         | 91    | 73        | 0         | 73    |           | 27        | 27    | 235       | 29        | 264         |
| 2007 | 51        |           | 51    | 56        |           | 56    | 52        |           | 52    |           | 23        | 23    | 159       | 23        | 182         |

\* Except for 1993 - 1996, AU's entry is displayed as "part-time" though it may include some "full-time" students.

# UT: MOUNT ROYAL COLLEGE

## STUDENTS TRANSFERRING TO ALBERTA UNIVERSITIES FROM MOUNT ROYAL COLLEGE, FALL 1990 - FALL 2007

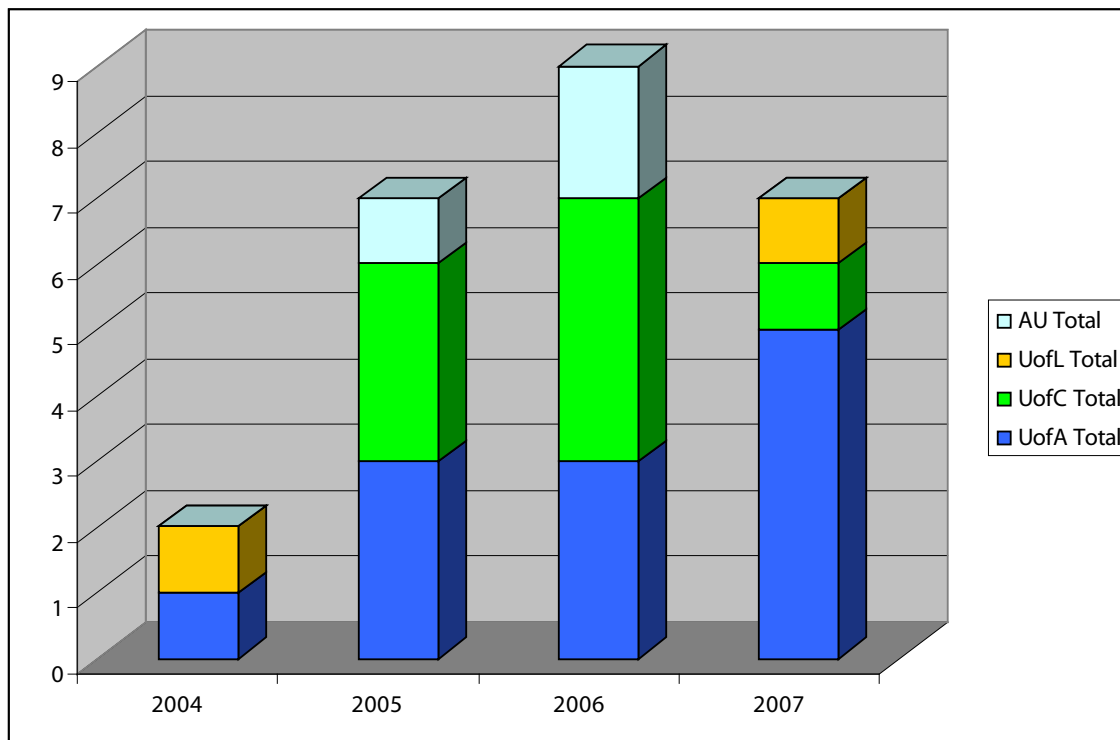


| Year | UofA      |           |       | Uof C     |           |       | UofL      |           |       | AU*       |           |       | Subtotals |           | Grand Total |
|------|-----------|-----------|-------|-----------|-----------|-------|-----------|-----------|-------|-----------|-----------|-------|-----------|-----------|-------------|
|      | Full-time | Part-time | Total | Full-time | Part-time | Total | Full-time | Part-time | Total | Full-time | Part-time | Total | Full-time | Part-time |             |
| 1990 | 25        | 4         | 29    | 385       | 76        | 461   | 53        | 2         | 55    |           | 58        | 58    | 463       | 140       | 603         |
| 1991 | 36        | 1         | 37    | 338       | 77        | 415   | 44        | 2         | 46    |           | 80        | 80    | 418       | 160       | 578         |
| 1992 | 42        | 8         | 50    | 383       | 38        | 421   | 56        | 2         | 58    |           | 66        | 66    | 481       | 114       | 595         |
| 1993 | 44        | 4         | 48    | 404       | 22        | 426   | 41        |           | 41    | 11        | 78        | 89    | 500       | 104       | 604         |
| 1994 | 29        | 2         | 31    | 404       | 29        | 433   | 54        | 2         | 56    | 7         | 54        | 61    | 494       | 87        | 581         |
| 1995 | 38        | 5         | 43    | 514       | 47        | 561   | 51        | 2         | 53    | 9         | 51        | 60    | 612       | 105       | 717         |
| 1996 | 43        | 2         | 45    | 540       | 43        | 583   | 60        | 8         | 68    | 4         | 45        | 49    | 647       | 98        | 745         |
| 1997 | 52        | 4         | 56    | 507       | 27        | 534   | 66        | 8         | 74    |           | 65        | 65    | 625       | 104       | 729         |
| 1998 | 49        | 5         | 54    | 481       | 31        | 512   | 108       | 9         | 117   |           | 80        | 80    | 638       | 125       | 763         |
| 1999 | 79        |           | 79    | 516       | 29        | 545   | 134       | 12        | 146   |           | 88        | 88    | 729       | 129       | 858         |
| 2000 | 60        | 6         | 66    | 541       | 36        | 577   | 147       | 12        | 159   |           | 45        | 45    | 748       | 99        | 847         |
| 2001 | 62        | 1         | 63    | 538       | 35        | 573   | 126       | 23        | 149   |           | 79        | 79    | 726       | 138       | 864         |
| 2002 | 52        | 3         | 55    | 575       | 37        | 612   | 130       | 9         | 139   |           | 102       | 102   | 757       | 151       | 908         |
| 2003 | 74        | 3         | 77    | 549       | 38        | 587   | 124       | 10        | 134   |           | 135       | 135   | 747       | 186       | 933         |
| 2004 | 96        | 11        | 107   | 457       | 20        | 477   | 168       | 12        | 180   |           | 108       | 108   | 721       | 151       | 872         |
| 2005 | 110       | 9         | 119   | 567       | 29        | 596   | 153       | 9         | 162   |           | 158       | 158   | 830       | 205       | 1,035       |
| 2006 | 82        | 3         | 85    | 562       | 27        | 589   | 166       | 9         | 175   |           | 368       | 368   | 810       | 407       | 1,217       |
| 2007 | 84        | 3         | 87    | 460       | 29        | 489   | 146       | 9         | 155   |           | 121       | 121   | 690       | 162       | 852         |

\* Except for 1993 - 1996, AU's entry is displayed as "part-time" though it may include some "full-time" students.

# UT: NORTHERN LAKES COLLEGE

## STUDENTS TRANSFERRING TO ALBERTA UNIVERSITIES FROM NORTHERN LAKES COLLEGE, FALL 1990 - FALL 2007



| Year | UofA      |           |       | Uof C     |           |       | UofL      |           |       | AU*       |           |       | Subtotals |           | Grand Total |
|------|-----------|-----------|-------|-----------|-----------|-------|-----------|-----------|-------|-----------|-----------|-------|-----------|-----------|-------------|
|      | Full-time | Part-time | Total | Full-time | Part-time | Total | Full-time | Part-time | Total | Full-time | Part-time | Total | Full-time | Part-time |             |
| 2004 | 1         |           | 1     |           |           | 0     | 1         |           | 1     |           |           | 0     | 2         | 0         | 2           |
| 2005 | 3         |           | 3     | 3         |           | 3     |           |           | 0     |           | 1         | 1     | 6         | 1         | 7           |
| 2006 | 3         |           | 3     | 4         |           | 4     |           |           | 0     |           | 2         | 2     | 7         | 2         | 9           |
| 2007 | 5         |           | 5     | 1         |           | 1     | 1         |           | 1     |           |           | 0     | 7         | 0         | 7           |

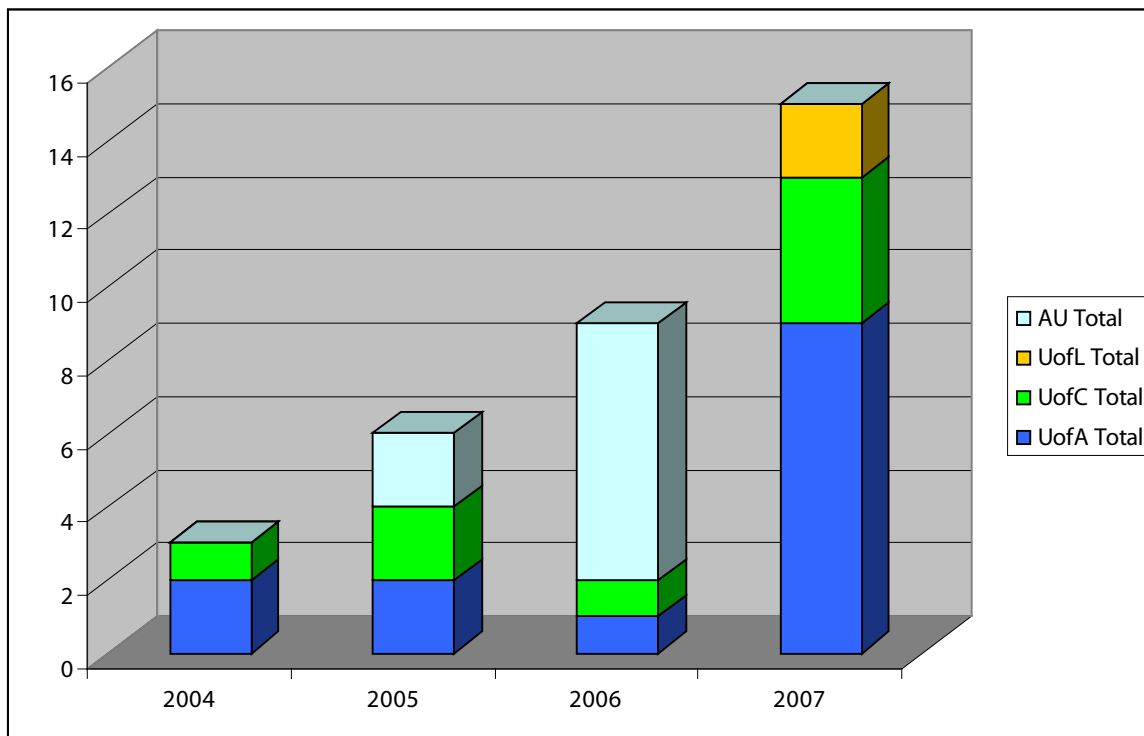
Given its new mandate, Northern Lakes College began offering university transfer programs in 2004.

\* Except for 1993 - 1996, AU's entry is displayed as "part-time" though it may include some "full-time" students.



# UT: PORTAGE COLLEGE

## STUDENTS TRANSFERRING TO ALBERTA UNIVERSITIES FROM MOUNT ROYAL COLLEGE, FALL 1990 - FALL 2007



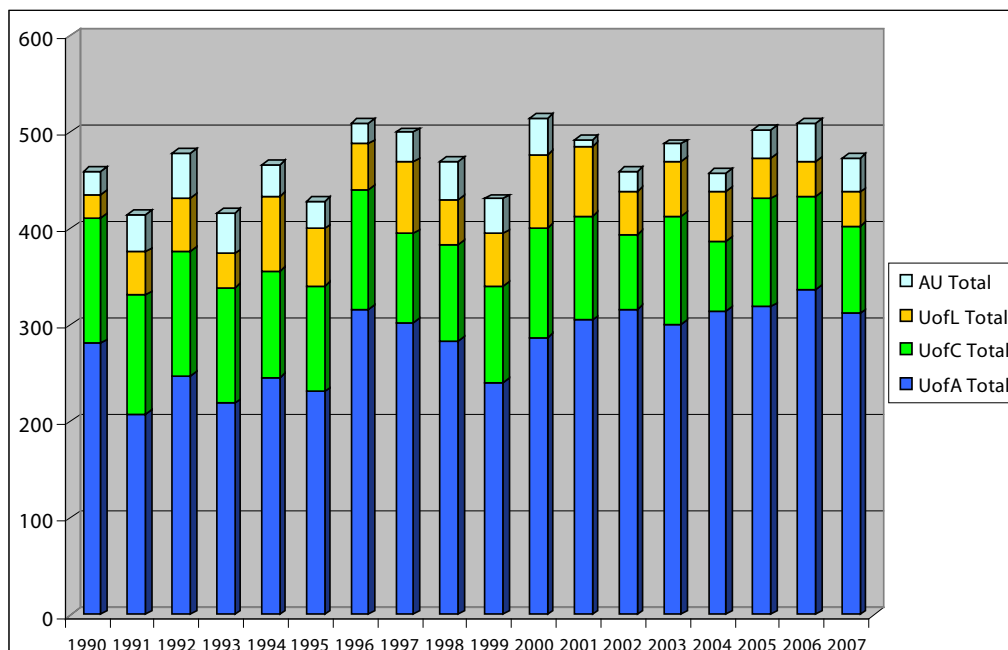
| Year | UofA      |           |       | Uof C     |           |       | UofL      |           |       | AU*       |           |       | Subtotals |           | Grand Total |
|------|-----------|-----------|-------|-----------|-----------|-------|-----------|-----------|-------|-----------|-----------|-------|-----------|-----------|-------------|
|      | Full-time | Part-time | Total | Full-time | Part-time | Total | Full-time | Part-time | Total | Full-time | Part-time | Total | Full-time | Part-time |             |
| 2004 | 1         | 1         | 2     | 1         |           | 1     |           |           | 0     |           |           | 0     | 2         | 1         | 3           |
| 2005 | 1         | 1         | 2     | 2         |           | 2     |           |           | 0     |           | 2         | 2     | 3         | 3         | 6           |
| 2006 | 1         |           | 1     | 1         |           | 1     |           |           | 0     |           | 6         | 6     | 2         | 6         | 8           |
| 2007 | 9         |           | 9     | 4         |           | 4     | 0         |           | 0     |           | 0         | 0     | 13        | 0         | 13          |

Given its new mandate, Portage College began offering university transfer programs in 2004.

\* Except for 1993 - 1996, AU's entry is displayed as "part-time" though it may include some "full-time" students.

# UT: RED DEER COLLEGE

## STUDENTS TRANSFERRING TO ALBERTA UNIVERSITIES FROM RED DEER COLLEGE, FALL 1990 - FALL 2007

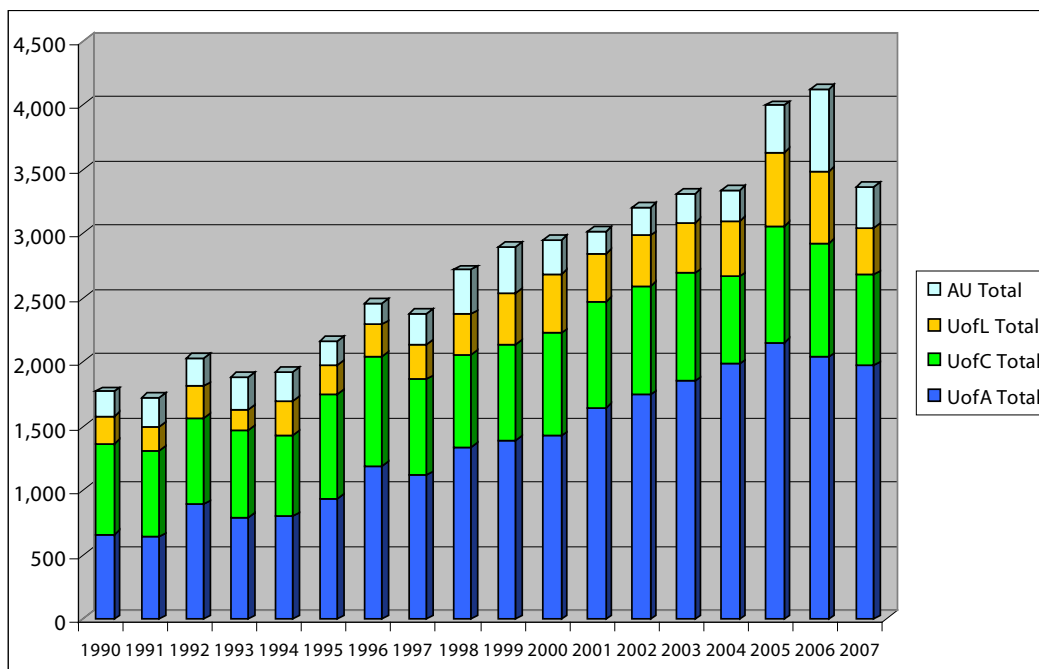


| Year | UofA      |           |       | UofC      |           |       | UofL      |           |       | AU*       |           |       | Subtotals |           | Grand Total |
|------|-----------|-----------|-------|-----------|-----------|-------|-----------|-----------|-------|-----------|-----------|-------|-----------|-----------|-------------|
|      | Full-time | Part-time | Total | Full-time | Part-time | Total | Full-time | Part-time | Total | Full-time | Part-time | Total | Full-time | Part-time |             |
| 1990 | 264       | 17        | 281   | 118       | 12        | 130   | 25        |           | 25    |           | 23        | 23    | 407       | 52        | 459         |
| 1991 | 189       | 19        | 208   | 115       | 8         | 123   | 45        |           | 45    |           | 39        | 39    | 349       | 66        | 415         |
| 1992 | 232       | 16        | 248   | 124       | 5         | 129   | 54        | 1         | 55    |           | 47        | 47    | 410       | 69        | 479         |
| 1993 | 202       | 17        | 219   | 118       | 2         | 120   | 35        |           | 35    | 9         | 34        | 43    | 364       | 53        | 417         |
| 1994 | 232       | 14        | 246   | 107       | 3         | 110   | 76        | 1         | 77    | 5         | 28        | 33    | 420       | 46        | 466         |
| 1995 | 212       | 19        | 231   | 107       | 2         | 109   | 59        | 1         | 60    | 5         | 24        | 29    | 383       | 46        | 429         |
| 1996 | 309       | 7         | 316   | 122       | 3         | 125   | 46        | 1         | 47    | 5         | 16        | 21    | 482       | 27        | 509         |
| 1997 | 297       | 5         | 302   | 90        | 3         | 93    | 72        | 2         | 74    |           | 31        | 31    | 459       | 41        | 500         |
| 1998 | 276       | 7         | 283   | 98        | 3         | 101   | 45        | 1         | 46    |           | 40        | 40    | 419       | 51        | 470         |
| 1999 | 240       |           | 240   | 93        | 7         | 100   | 53        | 2         | 55    |           | 36        | 36    | 386       | 45        | 431         |
| 2000 | 281       | 6         | 287   | 113       | 1         | 114   | 73        | 3         | 76    |           | 38        | 38    | 467       | 48        | 515         |
| 2001 | 299       | 6         | 305   | 101       | 7         | 108   | 69        | 3         | 72    |           | 7         | 7     | 469       | 23        | 492         |
| 2002 | 304       | 12        | 316   | 75        | 3         | 78    | 43        | 2         | 45    |           | 20        | 20    | 422       | 37        | 459         |
| 2003 | 289       | 12        | 301   | 109       | 3         | 112   | 56        | 1         | 57    |           | 18        | 18    | 454       | 34        | 488         |
| 2004 | 308       | 6         | 314   | 70        | 3         | 73    | 51        | 1         | 52    |           | 19        | 19    | 429       | 29        | 458         |
| 2005 | 312       | 7         | 319   | 108       | 4         | 112   | 42        |           | 42    |           | 30        | 30    | 462       | 41        | 503         |
| 2006 | 330       | 7         | 337   | 93        | 3         | 96    | 36        | 1         | 37    |           | 39        | 39    | 459       | 50        | 509         |
| 2007 | 304       | 8         | 312   | 85        | 6         | 91    | 35        | 0         | 35    |           | 35        | 35    | 424       | 49        | 473         |

\* Except for 1993 - 1996, AU's entry is displayed as "part-time" though it may include some "full-time" students.

# UT PROGRAMS: OVERALL

## STUDENTS TRANSFERRING TO ALBERTA UNIVERSITIES FROM FORMAL UNIVERSITY TRANSFER PROGRAMS\*, FALL 1990 - FALL 2007



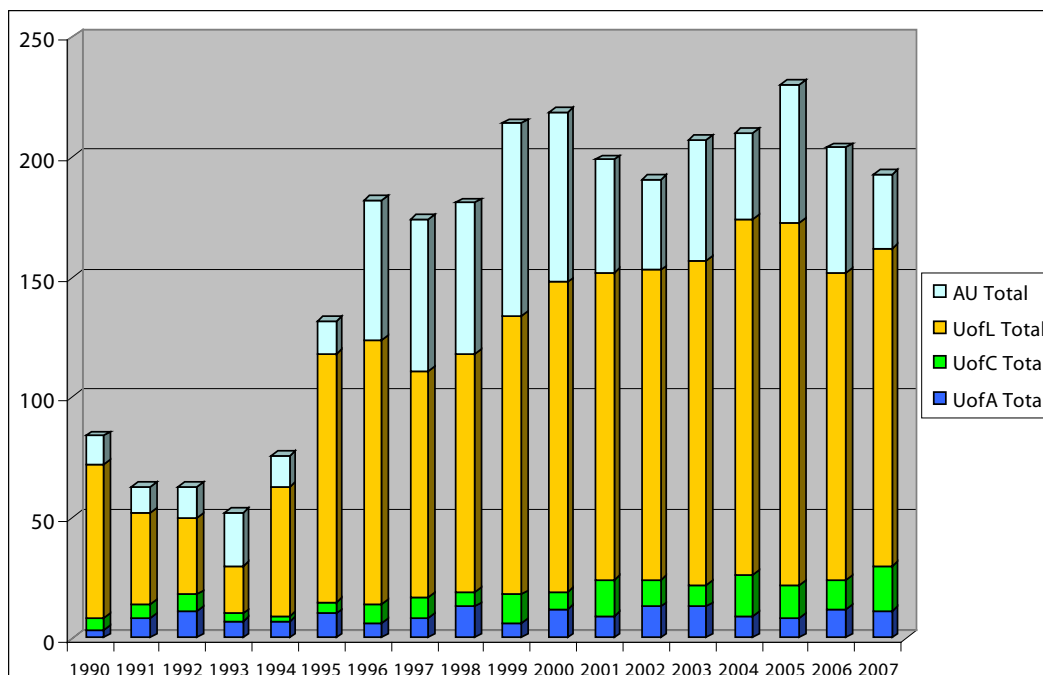
| Year | UofA      |           |       | UofC      |           |       | UofL      |           |       | AU**      |           |       | Subtotals |           | Grand Total |
|------|-----------|-----------|-------|-----------|-----------|-------|-----------|-----------|-------|-----------|-----------|-------|-----------|-----------|-------------|
|      | Full-time | Part-time | Total | Full-time | Part-time | Total | Full-time | Part-time | Total | Full-time | Part-time | Total | Full-time | Part-time |             |
| 1990 | 583       | 74        | 657   | 610       | 99        | 709   | 206       | 5         | 211   |           | 193       | 193   | 1,399     | 371       | 1,770       |
| 1991 | 542       | 96        | 638   | 576       | 97        | 673   | 183       | 6         | 189   |           | 227       | 227   | 1,301     | 426       | 1,727       |
| 1992 | 760       | 132       | 892   | 623       | 53        | 676   | 239       | 3         | 242   |           | 220       | 220   | 1,622     | 408       | 2,030       |
| 1993 | 689       | 101       | 790   | 647       | 29        | 676   | 162       | 2         | 164   | 37        | 220       | 257   | 1,535     | 352       | 1,887       |
| 1994 | 720       | 77        | 797   | 603       | 35        | 638   | 254       | 12        | 266   | 29        | 194       | 223   | 1,606     | 318       | 1,924       |
| 1995 | 834       | 102       | 936   | 756       | 56        | 812   | 226       | 3         | 229   | 21        | 168       | 189   | 1,837     | 329       | 2,166       |
| 1996 | 1,091     | 102       | 1,193 | 799       | 49        | 848   | 229       | 20        | 249   | 22        | 145       | 167   | 2,141     | 316       | 2,457       |
| 1997 | 1,036     | 82        | 1,118 | 708       | 37        | 745   | 257       | 13        | 270   |           | 244       | 244   | 2,001     | 376       | 2,377       |
| 1998 | 1,225     | 116       | 1,341 | 680       | 38        | 718   | 297       | 13        | 310   |           | 347       | 347   | 2,202     | 514       | 2,716       |
| 1999 | 1,390     |           | 1,390 | 708       | 41        | 749   | 368       | 29        | 397   |           | 358       | 358   | 2,466     | 428       | 2,894       |
| 2000 | 1,318     | 106       | 1,424 | 756       | 45        | 801   | 419       | 35        | 454   |           | 271       | 271   | 2,493     | 457       | 2,950       |
| 2001 | 1,540     | 103       | 1,643 | 778       | 48        | 826   | 338       | 34        | 372   |           | 176       | 176   | 2,656     | 361       | 3,017       |
| 2002 | 1,622     | 123       | 1,745 | 795       | 50        | 845   | 369       | 22        | 391   |           | 220       | 220   | 2,786     | 415       | 3,201       |
| 2003 | 1,724     | 127       | 1,851 | 797       | 43        | 840   | 371       | 19        | 390   |           | 229       | 229   | 2,892     | 418       | 3,310       |
| 2004 | 1,860     | 123       | 1,983 | 651       | 28        | 679   | 411       | 23        | 434   |           | 243       | 243   | 2,922     | 417       | 3,339       |
| 2005 | 2,031     | 120       | 2,151 | 857       | 47        | 904   | 540       | 37        | 577   |           | 362       | 362   | 3,428     | 566       | 3,994       |
| 2006 | 1,919     | 116       | 2,035 | 841       | 43        | 884   | 531       | 28        | 559   |           | 645       | 645   | 3,291     | 832       | 4,123       |
| 2007 | 1,879     | 90        | 1,969 | 664       | 42        | 706   | 346       | 20        | 366   | 0         | 321       | 321   | 2,889     | 473       | 3,362       |

\*In the past, university transfer programs were offered at GPRC, GMC, KC, Lakeland, MHC, MRC, and RDC. In 2004, Portage College and Northern Lakes College were added, given their new mandates.

\*\* Except for 1993 - 1996, AU's entry is displayed as "part-time" though it may include some "full-time" students.

# UT: LETHBRIDGE COLLEGE

## STUDENTS TRANSFERRING TO ALBERTA UNIVERSITIES FROM LETHBRIDGE COLLEGE, FALL 1990 - FALL 2007

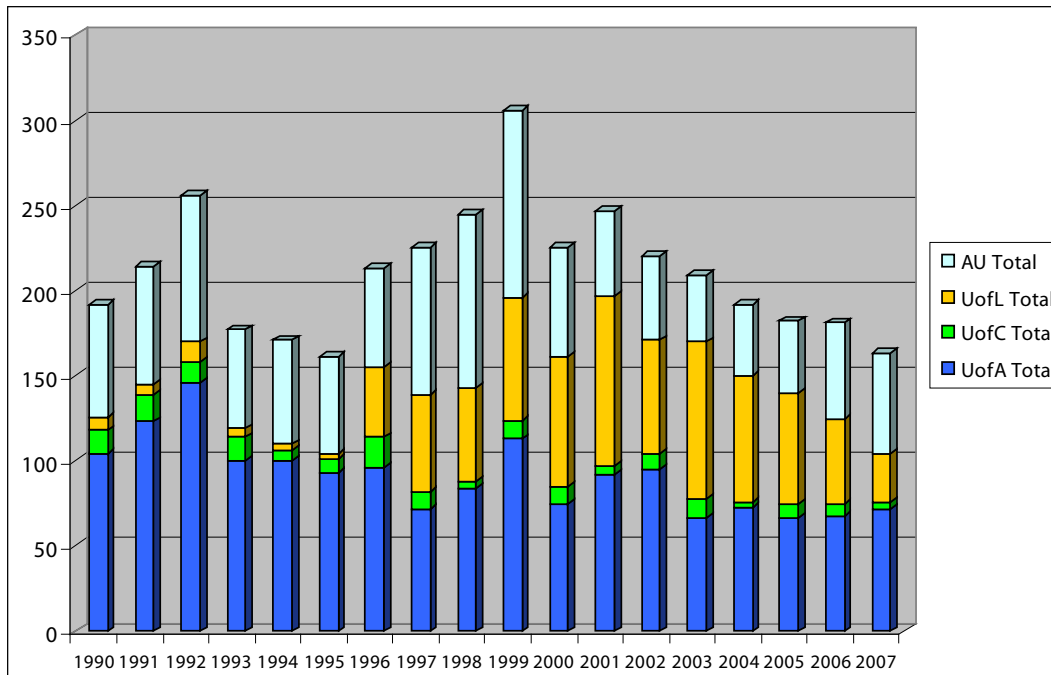


| Year | UofA      |           |       | Uof C     |           |       | UofL      |           |       | AU*       |           |       | Subtotals |           | Grand Total |
|------|-----------|-----------|-------|-----------|-----------|-------|-----------|-----------|-------|-----------|-----------|-------|-----------|-----------|-------------|
|      | Full-time | Part-time | Total | Full-time | Part-time | Total | Full-time | Part-time | Total | Full-time | Part-time | Total | Full-time | Part-time |             |
| 1990 | 2         | 1         | 3     | 4         | 1         | 5     | 52        | 12        | 64    |           | 12        | 12    | 58        | 26        | 84          |
| 1991 | 6         | 2         | 8     | 6         |           | 6     | 30        | 8         | 38    |           | 11        | 11    | 42        | 21        | 63          |
| 1992 | 10        | 1         | 11    | 5         | 2         | 7     | 28        | 4         | 32    |           | 13        | 13    | 43        | 20        | 63          |
| 1993 | 5         | 2         | 7     | 3         |           | 3     | 19        | 1         | 20    | 1         | 21        | 22    | 28        | 24        | 52          |
| 1994 | 7         |           | 7     | 2         |           | 2     | 48        | 6         | 54    |           | 13        | 13    | 57        | 19        | 76          |
| 1995 | 7         | 3         | 10    | 4         | 1         | 5     | 93        | 10        | 103   | 2         | 12        | 14    | 106       | 26        | 132         |
| 1996 | 5         | 1         | 6     | 8         |           | 8     | 105       | 5         | 110   | 13        | 45        | 58    | 131       | 51        | 182         |
| 1997 | 6         | 2         | 8     | 9         |           | 9     | 84        | 10        | 94    |           | 63        | 63    | 99        | 75        | 174         |
| 1998 | 10        | 3         | 13    | 6         |           | 6     | 97        | 2         | 99    |           | 63        | 63    | 113       | 68        | 181         |
| 1999 | 6         |           | 6     | 12        |           | 12    | 113       | 3         | 116   |           | 80        | 80    | 131       | 83        | 214         |
| 2000 | 12        |           | 12    | 6         | 1         | 7     | 117       | 12        | 129   |           | 71        | 71    | 135       | 84        | 219         |
| 2001 | 5         | 4         | 9     | 14        | 1         | 15    | 121       | 7         | 128   |           | 47        | 47    | 140       | 59        | 199         |
| 2002 | 9         | 4         | 13    | 10        | 1         | 11    | 120       | 9         | 129   |           | 38        | 38    | 139       | 52        | 191         |
| 2003 | 11        | 2         | 13    | 8         | 1         | 9     | 129       | 6         | 135   |           | 50        | 50    | 148       | 59        | 207         |
| 2004 | 8         | 1         | 9     | 16        | 1         | 17    | 138       | 10        | 148   |           | 36        | 36    | 162       | 48        | 210         |
| 2005 | 7         | 1         | 8     | 11        | 3         | 14    | 142       | 9         | 151   |           | 57        | 57    | 160       | 70        | 230         |
| 2006 | 10        | 2         | 12    | 12        | 0         | 12    | 122       | 6         | 128   |           | 52        | 52    | 144       | 60        | 204         |
| 2007 | 10        | 1         | 11    | 17        | 2         | 19    | 123       | 9         | 132   |           | 31        | 31    | 150       | 43        | 193         |

\* Except for 1993 - 1996, AU's entry is displayed as "part-time" though it may include some "full-time" students.

# UT: NAIT

## STUDENTS TRANSFERRING TO ALBERTA UNIVERSITIES FROM NAIT, FALL 1990 - FALL 2007

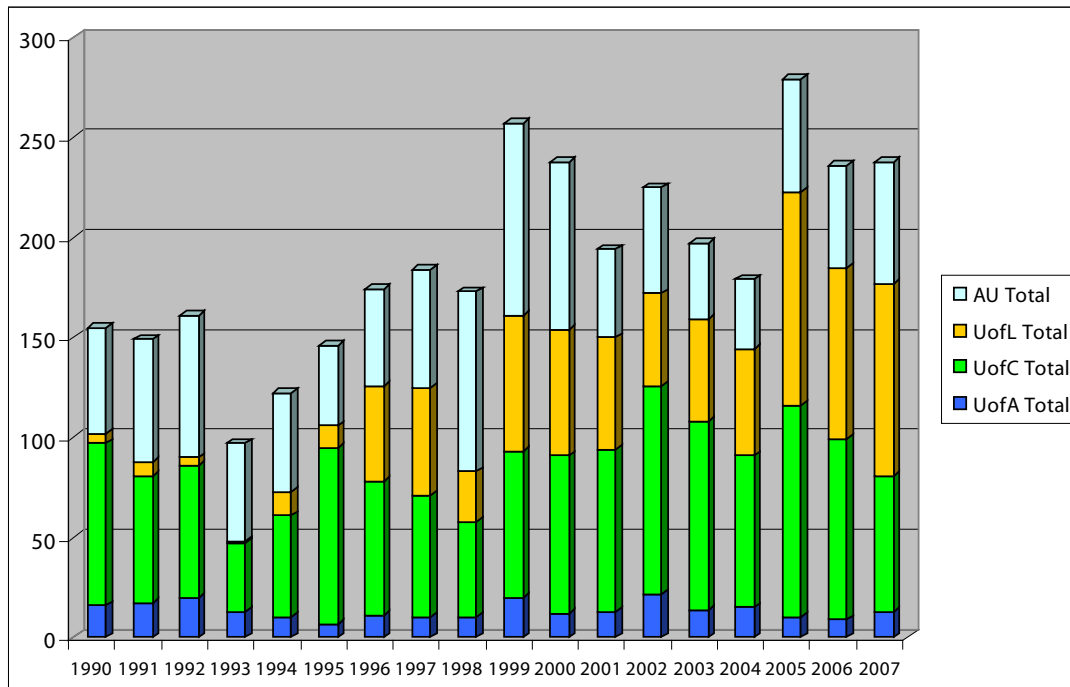


| Year | UofA      |           |       | UofC      |           |       | UofL      |           |       | AU*       |           |       | Subtotals |           | Grand Total |
|------|-----------|-----------|-------|-----------|-----------|-------|-----------|-----------|-------|-----------|-----------|-------|-----------|-----------|-------------|
|      | Full-time | Part-time | Total | Full-time | Part-time | Total | Full-time | Part-time | Total | Full-time | Part-time | Total | Full-time | Part-time |             |
| 1990 | 72        | 32        | 104   | 13        | 1         | 14    | 7         | 1         | 8     |           | 66        | 66    | 92        | 100       | 192         |
| 1991 | 79        | 44        | 123   | 11        | 5         | 16    | 6         |           | 6     |           | 69        | 69    | 96        | 118       | 214         |
| 1992 | 82        | 64        | 146   | 11        | 1         | 12    | 12        |           | 12    |           | 86        | 86    | 105       | 151       | 256         |
| 1993 | 71        | 29        | 100   | 13        | 1         | 14    | 5         |           | 5     | 6         | 52        | 58    | 95        | 82        | 177         |
| 1994 | 59        | 41        | 100   | 4         | 2         | 6     | 3         | 1         | 4     | 2         | 59        | 61    | 68        | 103       | 171         |
| 1995 | 70        | 23        | 93    | 6         | 2         | 8     | 2         | 1         | 3     | 2         | 55        | 57    | 80        | 81        | 161         |
| 1996 | 71        | 25        | 96    | 18        |           | 18    | 28        | 13        | 41    | 4         | 54        | 58    | 121       | 92        | 213         |
| 1997 | 55        | 17        | 72    | 8         | 2         | 10    | 38        | 19        | 57    |           | 86        | 86    | 101       | 124       | 225         |
| 1998 | 54        | 30        | 84    | 1         | 3         | 4     | 40        | 15        | 55    |           | 102       | 102   | 95        | 150       | 245         |
| 1999 | 113       |           | 113   | 8         | 3         | 11    | 44        | 28        | 72    |           | 110       | 110   | 165       | 141       | 306         |
| 2000 | 52        | 23        | 75    | 9         | 1         | 10    | 63        | 13        | 76    |           | 64        | 64    | 124       | 101       | 225         |
| 2001 | 60        | 32        | 92    | 4         | 1         | 5     | 77        | 23        | 100   |           | 50        | 50    | 141       | 106       | 247         |
| 2002 | 71        | 24        | 95    | 9         |           | 9     | 54        | 13        | 67    |           | 49        | 49    | 134       | 86        | 220         |
| 2003 | 49        | 18        | 67    | 9         | 2         | 11    | 67        | 25        | 92    |           | 39        | 39    | 125       | 84        | 209         |
| 2004 | 52        | 21        | 73    | 3         |           | 3     | 62        | 12        | 74    |           | 42        | 42    | 117       | 75        | 192         |
| 2005 | 51        | 16        | 67    | 8         |           | 8     | 53        | 12        | 65    |           | 42        | 42    | 112       | 70        | 182         |
| 2006 | 52        | 16        | 68    | 3         | 4         | 7     | 33        | 17        | 50    |           | 56        | 56    | 88        | 93        | 181         |
| 2007 | 62        | 10        | 72    | 4         | 0         | 4     | 22        | 6         | 28    |           | 59        | 59    | 88        | 75        | 163         |

\* Except for 1993 - 1996, AU's entry is displayed as "part-time" though it may include some "full-time" students.

# UT: SAIT

## STUDENTS TRANSFERRING TO ALBERTA UNIVERSITIES FROM SAIT, FALL 1990 - FALL 2007



| Year | UofA      |           |       | Uof C     |           |       | UofL      |           |       | AU*       |           |       | Subtotals |           | Grand Total |
|------|-----------|-----------|-------|-----------|-----------|-------|-----------|-----------|-------|-----------|-----------|-------|-----------|-----------|-------------|
|      | Full-time | Part-time | Total | Full-time | Part-time | Total | Full-time | Part-time | Total | Full-time | Part-time | Total | Full-time | Part-time |             |
| 1990 | 2         | 1         | 3     | 4         | 1         | 5     | 52        | 12        | 64    |           | 12        | 12    | 58        | 26        | 84          |
| 1991 | 6         | 2         | 8     | 6         |           | 6     | 30        | 8         | 38    |           | 11        | 11    | 42        | 21        | 63          |
| 1992 | 10        | 1         | 11    | 5         | 2         | 7     | 28        | 4         | 32    |           | 13        | 13    | 43        | 20        | 63          |
| 1993 | 5         | 2         | 7     | 3         |           | 3     | 19        | 1         | 20    | 1         | 21        | 22    | 28        | 24        | 52          |
| 1994 | 7         |           | 7     | 2         |           | 2     | 48        | 6         | 54    |           | 13        | 13    | 57        | 19        | 76          |
| 1995 | 7         | 3         | 10    | 4         | 1         | 5     | 93        | 10        | 103   | 2         | 12        | 14    | 106       | 26        | 132         |
| 1996 | 5         | 1         | 6     | 8         |           | 8     | 105       | 5         | 110   | 13        | 45        | 58    | 131       | 51        | 182         |
| 1997 | 6         | 2         | 8     | 9         |           | 9     | 84        | 10        | 94    |           | 63        | 63    | 99        | 75        | 174         |
| 1998 | 10        | 3         | 13    | 6         |           | 6     | 97        | 2         | 99    |           | 63        | 63    | 113       | 68        | 181         |
| 1999 | 6         |           | 6     | 12        |           | 12    | 113       | 3         | 116   |           | 80        | 80    | 131       | 83        | 214         |
| 2000 | 12        |           | 12    | 6         | 1         | 7     | 117       | 12        | 129   |           | 71        | 71    | 135       | 84        | 219         |
| 2001 | 5         | 4         | 9     | 14        | 1         | 15    | 121       | 7         | 128   |           | 47        | 47    | 140       | 59        | 199         |
| 2002 | 9         | 4         | 13    | 10        | 1         | 11    | 120       | 9         | 129   |           | 38        | 38    | 139       | 52        | 191         |
| 2003 | 11        | 2         | 13    | 8         | 1         | 9     | 129       | 6         | 135   |           | 50        | 50    | 148       | 59        | 207         |
| 2004 | 8         | 1         | 9     | 16        | 1         | 17    | 138       | 10        | 148   |           | 36        | 36    | 162       | 48        | 210         |
| 2005 | 7         | 1         | 8     | 11        | 3         | 14    | 142       | 9         | 151   |           | 57        | 57    | 160       | 70        | 230         |
| 2006 | 10        | 2         | 12    | 12        | 0         | 12    | 122       | 6         | 128   |           | 52        | 52    | 144       | 60        | 204         |
| 2007 | 10        | 1         | 11    | 17        | 2         | 19    | 123       | 9         | 132   |           | 31        | 31    | 150       | 43        | 193         |

\* Except for 1993 - 1996, AU's entry is displayed as "part-time" though it may include some "full-time" students.